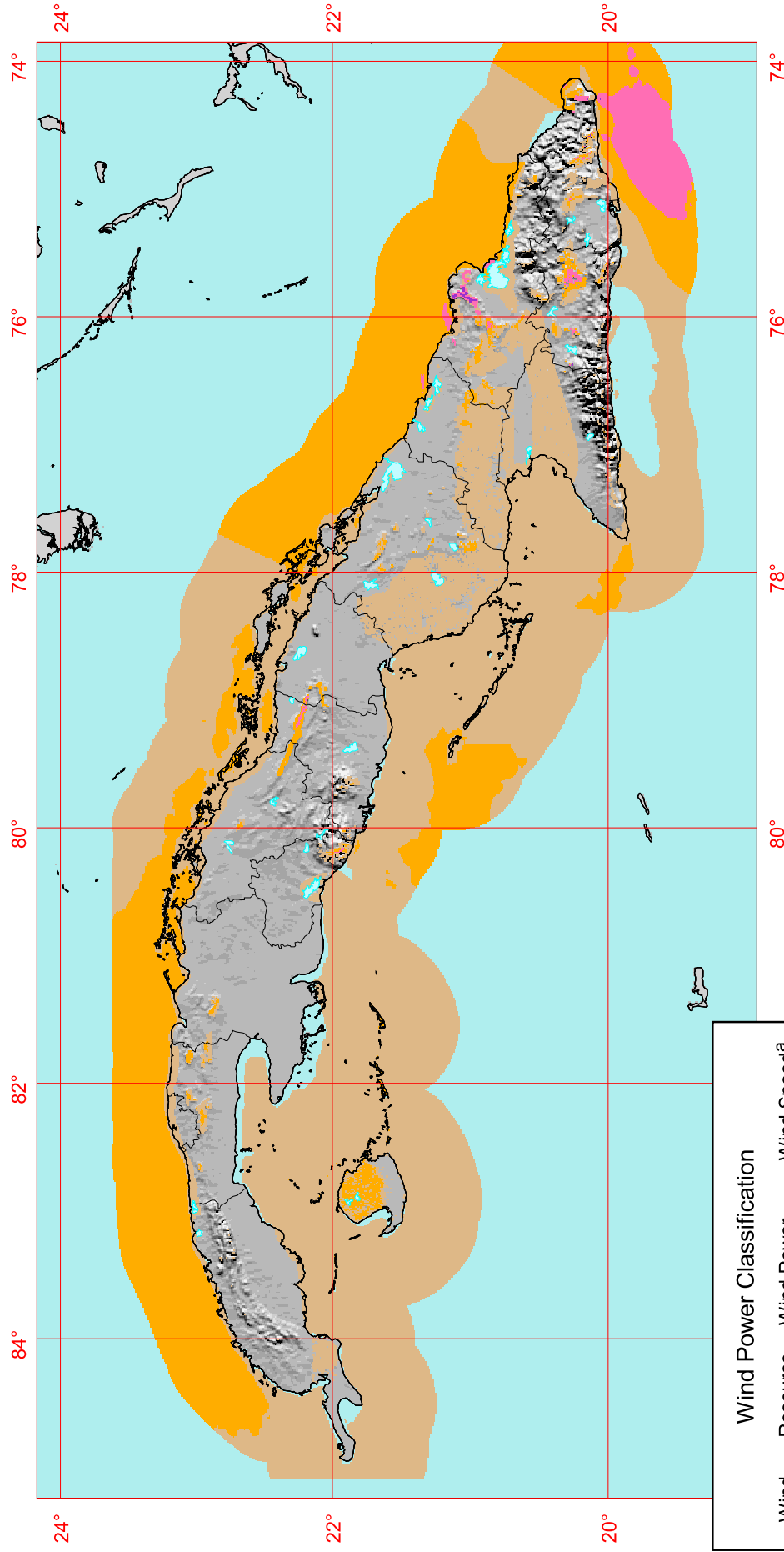


Cuba - 50 m Wind Power



Wind Power Classification

| Wind Power Class | Resource Potential | Wind Power Density at 50 m W/m ² | Wind Speed ^a at 50 m m/s |
|------------------|--------------------|---|-------------------------------------|
| 1 | Poor | 0 - 200 | 0 - 5.6 |
| 2 | Marginal | 200 - 300 | 5.6 - 6.4 |
| 3 | Moderate | 300 - 400 | 6.4 - 7.0 |
| 4 | Good | 400 - 500 | 7.0 - 7.5 |
| 5 | Excellent | 500 - 600 | 7.5 - 8.0 |
| 6 | | 600 - 800 | 8.0 - 8.8 |
| 7 | | > 800 | > 8.8 |

^a Wind speeds are based on a Weibull k value of 2.0



Solar and Wind
Energy Resource
Assessment



United Nations
Environment
Programme



Global Environment
Facility



U.S. Department of Energy
National Renewable Energy Laboratory