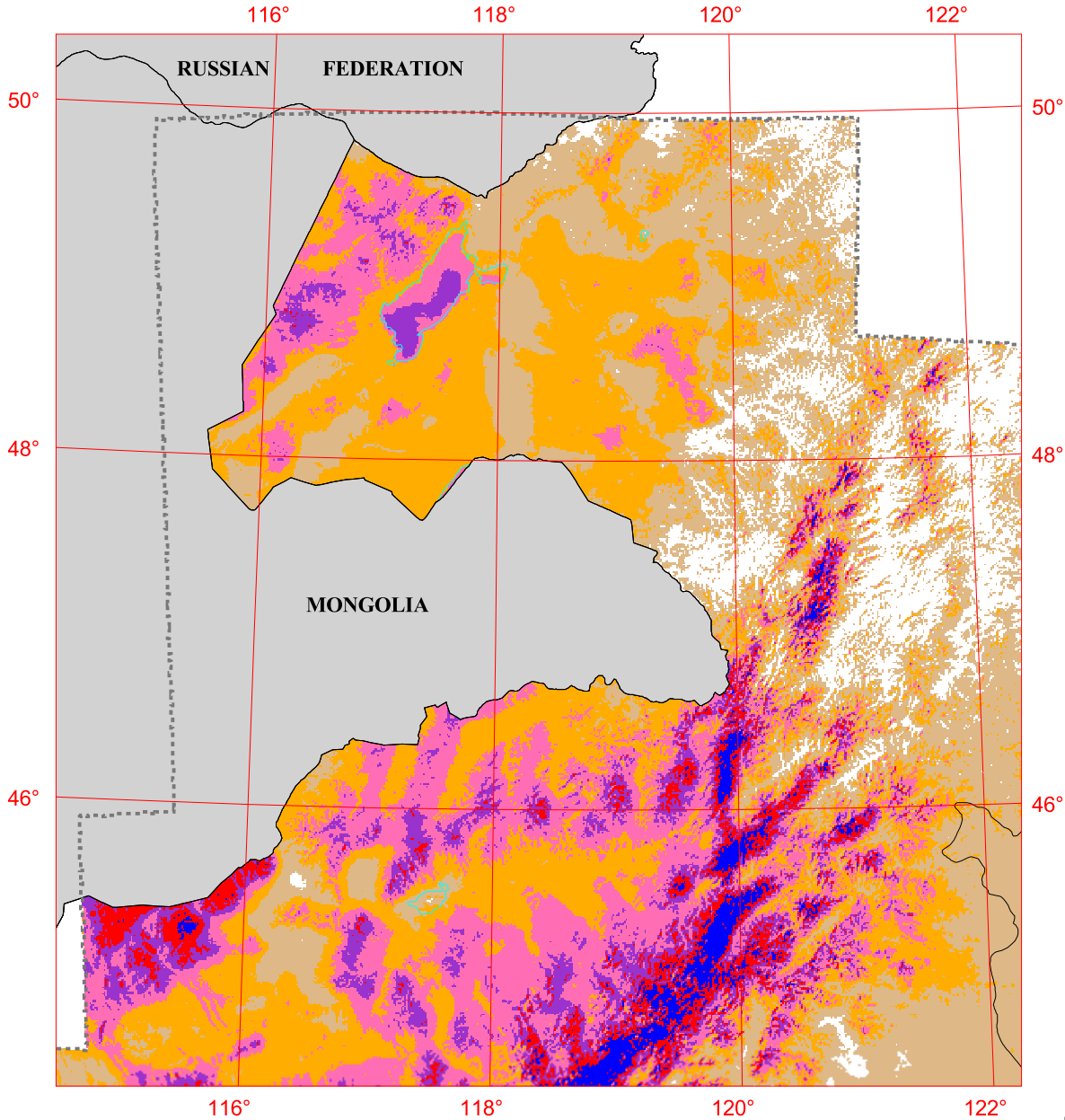


China - Manzhouli - 50 m Wind Power



Solar and Wind
Energy Resource
Assessment



United Nations
Environment
Programme



Global Environment
Facility

50 0 50 100 150 200 Kilometers



U.S. Department of Energy
National Renewable Energy Laboratory

Wind Power Classification

Wind Power Class	Resource Potential	Wind Power Density at 50 m W/m ²	Wind Speed ^a at 50 m m/s
1	Poor	0 - 200	0 - 5.6
2	Marginal	200 - 300	5.6 - 6.4
3	Moderate	300 - 400	6.4 - 7.0
4	Good	400 - 500	7.0 - 7.5
5	Excellent	500 - 600	7.5 - 8.0
6		600 - 800	8.0 - 8.8
7		> 800	> 8.8

^a Wind speeds are based on a Weibull k value of 2.0