

Project:  
**Quinault-Crane Creek**

Description:  
Data from file(s)  
Y:\shared\Anemometer\_Loan\_Programs\WPA.NA.Loans\Quinault #2 - WA\Quinault#2 030828.N03  
Y:\shared\Anemometer\_Loan\_Programs\WPA.NA.Loans\Quinault #2 - WA\Quinault#2 030311.N03  
Y:\shared\Anemometer\_Loan\_Programs\WPA.NA.Loans\Quinault #2 - WA\Quinault#2 030414.N03  
Y:\shared\Anemometer\_Loan\_Programs\WPA.NA.Loans\Quinault #2 - WA\Quinault#2 030511.N03  
Y:\shared\Anemometer\_Loan\_Programs\WPA.NA.Loans\Quinault #2 - WA\Quinault#2 030626.N03  
Y:\shared\Anemometer\_Loan\_Programs\WPA.NA.Loans\Quinault #2 - WA\Quinault#2 030722.N03  
Y:\shared\Anemometer\_Loan\_Programs\WPA.NA.Loans\Quinault #2 - WA\Quinault#2 030218.N03  
Y:\shared\Anemometer\_Loan\_Programs\WPA.NA.Loans\Quinault #2 - WA\Quinault#2 031103.N03  
Y:\shared\Anemometer\_Loan\_Programs\WPA.NA.Loans\Quinault #2 - WA\Quinault#2 030930.N03  
Y:\shared\Anemometer\_Loan\_Programs\WPA.NA.Loans\Quinault #2 - WA\Quinault#2 031211.N03  
Y:\shared\Anemometer\_Loan\_Programs\WPA.NA.Loans\Quinault #2 - WA\Quinault#2 040416.N04  
Y:\shared\Anemometer\_Loan\_Programs\WPA.NA.Loans\Quinault #2 - WA\Quinault#2 040602.N04  
Y:\shared\Anemometer\_Loan\_Programs\WPA.NA.Loans\Quinault #2 - WA\Quinault#2 040209.N04

Printed/Page  
08/05/2004 11:19 AM / 1

Licensed user:  
**National Renewable Energy Laboratory**  
1617 Cole Blvd. (MS3811)  
US-GOLDEN, CO 80401  
+1 303-384-7027

Calculated:  
08/05/2004 11:19 AM/

**Meteo data report, height: 20.0 m**

Name of meteo object: Quinault - Crane Creek

Data from: 02/19/2003 1:00 PM Data to: 06/24/2004 9:20 AM Observations: 70678 Observations per day: 144 Recovery rate: 100%

day	02/03	03/03	04/03	05/03	06/03	07/03	08/03	09/03	10/03	11/03	12/03	01/04	02/04	03/04	04/04	05/04	06/04	07/04
1		(142)	144	144	144	144	144	144	144	144	144	(105)	(87)	(127)	(111)	144	(141)	
2		(133)	(127)	144	144	144	144	(130)	144	144	144	(124)	144	144	(113)	(110)	(100)	
3		144	(94)	144	144	(125)	144	144	144	144	144	144	144	(117)	144	144	(117)	
4		144	144	144	(122)	144	144	144	(128)	144	144	144	144	144	(129)	144	(128)	
5		144	144	144	144	144	(128)	(104)	144	144	144	144	144	144	(114)	(130)	144	
6		144	144	144	144	(130)	(130)	144	144	144	144	144	(131)	144	(107)	(124)	144	
7		(101)	144	144	144	144	144	144	144	144	(103)	144	144	144	144	(128)	(109)	
8		144	144	144	144	144	144	144	144	144	(95)	144	(138)	(132)	(121)	144	144	
9		144	144	144	144	144	(132)	144	144	144	144	144	(72)	144	144	144	(128)	
10		144	144	144	144	(136)	144	144	144	144	144	144	(111)	(122)	(131)	144	144	
11		144	144	144	144	(133)	(128)	144	144	144	144	144	144	144	144	144	144	
12		144	144	144	144	144	144	144	144	(112)	144	144	144	144	(127)	(132)	(127)	
13		144	144	144	144	144	(117)	144	144	(111)	144	144	144	144	144	144	(126)	144
14		144	144	144	144	144	(123)	144	144	144	144	144	144	144	144	(108)	144	
15		144	144	144	144	(127)	144	144	144	144	144	144	144	(129)	144	(122)	144	
16		144	144	144	144	144	144	144	144	144	144	144	144	(121)	(131)	144	144	
17		144	144	144	(132)	144	144	144	144	144	144	144	144	144	(102)	(116)	(129)	
18		144	144	144	144	144	(131)	144	144	144	144	144	144	144	144	(121)	144	
19	(66)	144	144	144	144	144	144	144	144	(94)	144	(127)	(99)	144	144	(135)	(125)	
20	144	144	144	144	144	144	(131)	144	144	(125)	144	144	(115)	(128)	144	(111)	(114)	
21	144	144	144	(132)	144	144	144	144	144	144	144	144	144	144	144	144	(91)	
22	144	144	144	144	144	(139)	144	144	144	(109)	144	144	144	(102)	144	144	(99)	
23	144	144	144	144	144	144	(136)	144	144	(136)	144	144	144	(138)	144	144	144	
24	144	144	144	144	144	(136)	144	(134)	144	(116)	144	144	144	144	144	(119)	(33)	
25	144	144	144	144	144	(102)	144	144	144	144	144	144	144	144	(98)	(103)		
26	144	144	144	144	144	(133)	144	(126)	144	(119)	144	144	144	144	(92)	(125)		
27	144	144	144	144	(138)	(105)	(119)	144	(132)	144	(117)	(118)	144	(129)	144	(131)		
28	144	144	144	144	(133)	144	(125)	(126)	(139)	144	144	(131)	(125)	144	144	144		
29		144	144	144	144	144	144	(130)	144	(116)	144	(121)	144	144	144	(125)		
30		144	144	144	144	(111)	144	144	144	144	(134)			144	(120)	144		
31		144		144		144	144		144		(67)	(46)		(123)		144		
%	100	(99)	(98)	(100)	(99)	(95)	(96)	(97)	(99)	(95)	(95)	(94)	(93)	(95)	(91)	(91)	(70)	(0)

Project:

**Quinault-Crane Creek**

Description:

Data from file(s)  
 Y:\shared\Anemometer\_Loan\_Programs\WPA.NA.Loans\Quinault #2 - WA\Quinault#2 030828.N03  
 Y:\shared\Anemometer\_Loan\_Programs\WPA.NA.Loans\Quinault #2 - WA\Quinault#2 030311.N03  
 Y:\shared\Anemometer\_Loan\_Programs\WPA.NA.Loans\Quinault #2 - WA\Quinault#2 030414.N03  
 Y:\shared\Anemometer\_Loan\_Programs\WPA.NA.Loans\Quinault #2 - WA\Quinault#2 030511.N03  
 Y:\shared\Anemometer\_Loan\_Programs\WPA.NA.Loans\Quinault #2 - WA\Quinault#2 030626.N03  
 Y:\shared\Anemometer\_Loan\_Programs\WPA.NA.Loans\Quinault #2 - WA\Quinault#2 030722.N03  
 Y:\shared\Anemometer\_Loan\_Programs\WPA.NA.Loans\Quinault #2 - WA\Quinault#2 030218.N03  
 Y:\shared\Anemometer\_Loan\_Programs\WPA.NA.Loans\Quinault #2 - WA\Quinault#2 031103.N03  
 Y:\shared\Anemometer\_Loan\_Programs\WPA.NA.Loans\Quinault #2 - WA\Quinault#2 030330.N03  
 Y:\shared\Anemometer\_Loan\_Programs\WPA.NA.Loans\Quinault #2 - WA\Quinault#2 031211.N03  
 Y:\shared\Anemometer\_Loan\_Programs\WPA.NA.Loans\Quinault #2 - WA\Quinault#2 040416.N04  
 Y:\shared\Anemometer\_Loan\_Programs\WPA.NA.Loans\Quinault #2 - WA\Quinault#2 040602.N04  
 Y:\shared\Anemometer\_Loan\_Programs\WPA.NA.Loans\Quinault #2 - WA\Quinault#2 040209.N04

Printed/Page

08/05/2004 11:19 AM / 2

Licensed user:

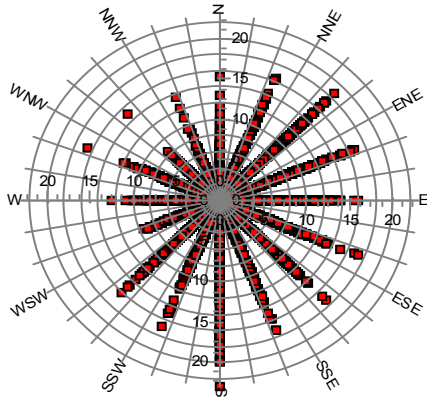
**National Renewable Energy Laboratory**  
 1617 Cole Blvd. (MS3811)  
 US-GOLDEN, CO 80401  
 +1 303-384-7027

Calculated:

08/05/2004 11:19 AM/

**Meteo data report, height: 20.0 m**

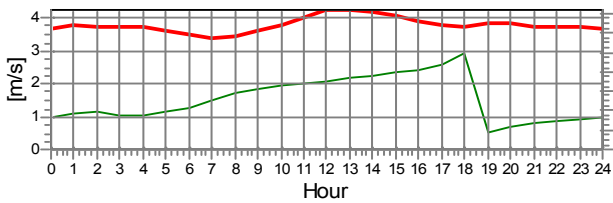
Name of meteo object: Quinault - Crane Creek



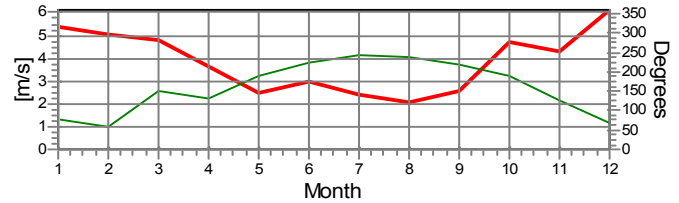
**Monthly mean values of wind speed in m/s**

Month	2003	2004	mean	mean of months
Jan		5.3	5.3	5.3
Feb	3.3	5.7	5.0	4.5
Mar	5.7	3.9	4.8	4.8
Apr	4.1	3.2	3.7	3.7
May	2.8	2.1	2.5	2.5
Jun	3.4	2.4	3.0	2.9
Jul	2.4		2.4	2.4
Aug	2.1		2.1	2.1
Sep	2.5		2.5	2.5
Oct	4.7		4.7	4.7
Nov	4.3		4.3	4.3
Dec	6.1		6.1	6.1
mean, all data	3.8	3.8	3.8	
mean of months	3.8	3.8		3.8

Wind speed [m/s]

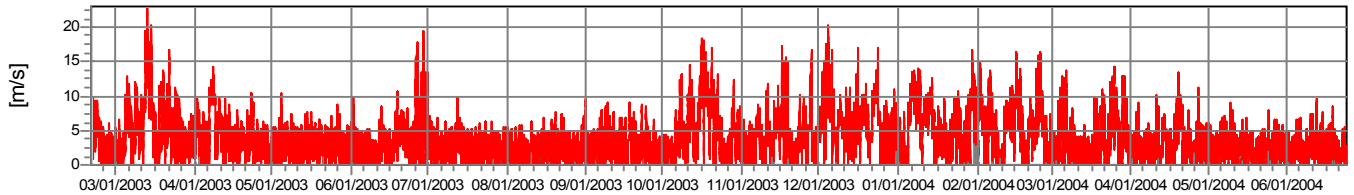


— Wind speed. Height: 20.0 m — Wind direction. Height: 20.0 m



— Wind speed. Height: 20.0 m — Wind direction. Height: 20.0 m

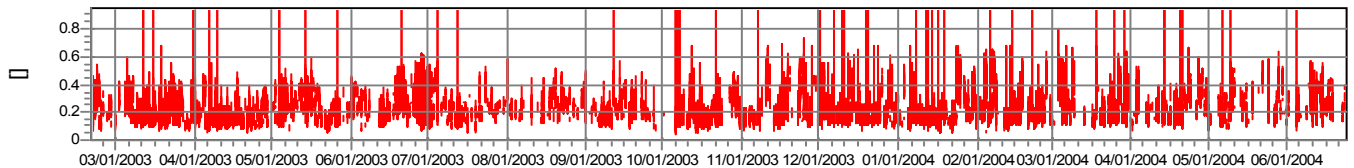
**Wind speed**



**Wind direction**



**Turbulence intensity  
V>4.0 m/s**



Project:

**Quinault-Crane Creek**

Description:

Data from file(s)  
 Y:\shared\Anemometer\_Load\_Programs\WPA.NA.Loans\Quinault #2 - WA\Quinault#2\_030828.N03  
 Y:\shared\Anemometer\_Load\_Programs\WPA.NA.Loans\Quinault #2 - WA\Quinault#2\_030311.N03  
 Y:\shared\Anemometer\_Load\_Programs\WPA.NA.Loans\Quinault #2 - WA\Quinault#2\_030414.N03  
 Y:\shared\Anemometer\_Load\_Programs\WPA.NA.Loans\Quinault #2 - WA\Quinault#2\_030511.N03  
 Y:\shared\Anemometer\_Load\_Programs\WPA.NA.Loans\Quinault #2 - WA\Quinault#2\_030626.N03  
 Y:\shared\Anemometer\_Load\_Programs\WPA.NA.Loans\Quinault #2 - WA\Quinault#2\_030722.N03  
 Y:\shared\Anemometer\_Load\_Programs\WPA.NA.Loans\Quinault #2 - WA\Quinault#2\_030218.N03  
 Y:\shared\Anemometer\_Load\_Programs\WPA.NA.Loans\Quinault #2 - WA\Quinault#2\_031103.N03  
 Y:\shared\Anemometer\_Load\_Programs\WPA.NA.Loans\Quinault #2 - WA\Quinault#2\_030830.N03  
 Y:\shared\Anemometer\_Load\_Programs\WPA.NA.Loans\Quinault #2 - WA\Quinault#2\_031211.N03  
 Y:\shared\Anemometer\_Load\_Programs\WPA.NA.Loans\Quinault #2 - WA\Quinault#2\_040416.N04  
 Y:\shared\Anemometer\_Load\_Programs\WPA.NA.Loans\Quinault #2 - WA\Quinault#2\_040602.N04  
 Y:\shared\Anemometer\_Load\_Programs\WPA.NA.Loans\Quinault #2 - WA\Quinault#2\_040209.N04

Printed/Page

08/05/2004 11:19 AM / 3

Licensed user:

**National Renewable Energy Laboratory**  
 1617 Cole Blvd. (MS3811)  
 US-GOLDEN, CO 80401  
 +1 303-384-7027

Calculated:

08/05/2004 11:19 AM/

**Meteo data report, height: 20.0 m**

Name of meteo object: Quinault - Crane Creek

**Frequency**

Wind speed m/s	Sum	N	NNE	NE	ENE	E	ESE	SE	SSE	S	SSW	SW	WSW	W	WNW	NW	NNW
0.00 - 0.49	5,929	148	252	355	434	489	564	425	443	482	444	432	397	308	354	247	155
0.50 - 1.49	11,045	312	364	524	524	667	914	861	918	976	916	786	933	770	696	521	363
1.50 - 2.49	10,717	253	342	553	421	542	979	698	712	875	870	903	1,118	830	705	546	370
2.50 - 3.49	10,238	267	327	551	336	518	1,189	748	527	736	898	776	993	889	678	436	369
3.50 - 4.49	8,024	248	258	488	354	494	877	598	386	394	726	797	523	779	607	272	223
4.50 - 5.49	5,531	169	209	526	369	405	605	375	280	194	488	499	178	487	448	165	134
5.50 - 6.49	3,935	119	195	535	390	416	383	230	183	122	270	240	91	239	326	98	98
6.50 - 7.49	3,209	67	153	619	406	407	292	237	140	80	147	164	72	153	181	52	39
7.50 - 8.49	2,523	26	156	647	374	253	226	132	111	71	105	122	40	129	93	23	15
8.50 - 9.49	1,831	15	76	456	288	205	137	145	125	71	79	73	23	71	49	6	12
9.50 - 10.49	1,496	9	62	330	186	178	109	196	181	75	57	39	6	38	23	0	7
10.50 - 11.49	1,167	11	42	249	173	133	99	118	144	59	49	49	2	12	22	0	5
11.50 - 12.49	762	6	48	217	93	95	67	51	55	49	31	34	2	4	8	0	2
12.50 - 13.49	466	7	28	154	59	55	36	23	35	33	15	15	0	0	2	1	3
13.50 - 14.49	247	3	23	77	22	22	9	11	20	31	14	12	0	0	1	1	1
14.50 - 15.49	179	7	12	32	25	14	7	2	6	49	13	7	0	0	1	4	0
15.50 - 16.49	151	1	12	29	11	11	2	5	14	61	2	1	0	0	0	0	2
16.50 - 17.49	129	2	4	19	7	2	5	6	7	69	3	1	0	0	3	0	1
17.50 - 18.49	54	1	1	11	1	1	3	0	4	32	0	0	0	0	0	0	0
18.50 - 19.49	21	0	0	5	0	1	0	0	1	14	0	0	0	0	0	0	0
19.50 - 20.49	13	0	0	1	0	0	2	0	0	10	0	0	0	0	0	0	0
20.50 - 21.49	1	0	0	0	0	0	0	0	0	1	0	0	0	0	0	0	0
21.50 - 22.49	6	0	0	0	0	0	0	0	0	6	0	0	0	0	0	0	0
22.50 - 23.49	3	0	0	0	0	0	0	0	0	3	0	0	0	0	0	0	0
Sum	67,677	1,671	2,564	6,378	4,473	4,908	6,505	4,861	4,292	4,493	5,127	4,950	4,378	4,709	4,197	2,372	1,799

**Turbulence**

Wind speed	Sum	N	NNE	NE	ENE	E	ESE	SE	SSE	S	SSW	SW	WSW	W	WNW	NW	NNW
0.00 - 0.49	0.000	0.000	0.000	0.000	0.000	0.000	0.000	0.000	0.000	0.000	0.000	0.000	0.000	0.000	0.000	0.000	0.000
0.50 - 1.49	0.000	0.000	0.000	0.000	0.000	0.000	0.000	0.000	0.000	0.000	0.000	0.000	0.000	0.000	0.000	0.000	0.000
1.50 - 2.49	0.000	0.000	0.000	0.000	0.000	0.000	0.000	0.000	0.000	0.000	0.000	0.000	0.000	0.000	0.000	0.000	0.000
2.50 - 3.49	0.000	0.000	0.000	0.000	0.000	0.000	0.000	0.000	0.000	0.000	0.000	0.000	0.000	0.000	0.000	0.000	0.000
3.50 - 4.49	0.259	0.262	0.206	0.168	0.197	0.193	0.157	0.196	0.200	0.294	0.353	0.281	0.336	0.349	0.335	0.298	0.271
4.50 - 5.49	0.243	0.232	0.204	0.171	0.190	0.185	0.160	0.163	0.179	0.245	0.338	0.313	0.360	0.334	0.314	0.293	0.278
5.50 - 6.49	0.232	0.202	0.207	0.182	0.188	0.188	0.173	0.162	0.165	0.250	0.354	0.333	0.357	0.321	0.308	0.277	0.255
6.50 - 7.49	0.207	0.203	0.206	0.170	0.164	0.175	0.158	0.153	0.170	0.190	0.348	0.329	0.340	0.307	0.306	0.285	0.245
7.50 - 8.49	0.197	0.214	0.206	0.163	0.161	0.171	0.159	0.147	0.160	0.188	0.357	0.321	0.312	0.294	0.286	0.261	0.215
8.50 - 9.49	0.194	0.240	0.207	0.164	0.168	0.171	0.169	0.151	0.158	0.178	0.368	0.316	0.303	0.300	0.301	0.240	0.265
9.50 - 10.49	0.181	0.217	0.210	0.166	0.163	0.167	0.161	0.150	0.151	0.183	0.332	0.306	0.262	0.304	0.285		0.249
10.50 - 11.49	0.184	0.216	0.214	0.172	0.163	0.177	0.155	0.157	0.155	0.174	0.315	0.291	0.277	0.287	0.302		0.255
11.50 - 12.49	0.186	0.262	0.223	0.175	0.166	0.158	0.163	0.168	0.150	0.168	0.312	0.321	0.215	0.336	0.323		0.262
12.50 - 13.49	0.185	0.230	0.219	0.176	0.169	0.175	0.167	0.164	0.172	0.165	0.281	0.316			0.240	0.209	0.240
13.50 - 14.49	0.188	0.236	0.228	0.181	0.178	0.159	0.159	0.174	0.144	0.164	0.217	0.336			0.259	0.189	0.257
14.50 - 15.49	0.190	0.185	0.218	0.187	0.176	0.192	0.191	0.212	0.144	0.173	0.212	0.299			0.260	0.209	
15.50 - 16.49	0.175	0.153	0.192	0.189	0.171	0.180	0.191	0.171	0.166	0.163	0.204	0.277					0.195
16.50 - 17.49	0.176	0.124	0.211	0.187	0.221	0.165	0.189	0.155	0.134	0.169	0.229	0.247			0.205		0.190
17.50 - 18.49	0.176	0.128	0.203	0.196	0.214	0.167	0.179		0.169	0.169							
18.50 - 19.49	0.169			0.168		0.169			0.184	0.168							
19.50 - 20.49	0.165			0.175			0.201			0.156							
20.50 - 21.49	0.158									0.158							
21.50 - 22.49	0.147									0.147							
22.50 - 23.49	0.142									0.142							
Sum	0.220	0.227	0.208	0.171	0.174	0.179	0.162	0.163	0.168	0.211	0.343	0.309	0.343	0.327	0.313	0.286	0.264

Project:

**Quinault-Crane Creek**

Description:

Data from file(s)  
 Y:\shared\Anemometer\_Loan\_Programs\WPA.NA.Loans\Quinault #2 - WA\Quinault#2\_030828.N03  
 Y:\shared\Anemometer\_Loan\_Programs\WPA.NA.Loans\Quinault #2 - WA\Quinault#2\_030311.N03  
 Y:\shared\Anemometer\_Loan\_Programs\WPA.NA.Loans\Quinault #2 - WA\Quinault#2\_030414.N03  
 Y:\shared\Anemometer\_Loan\_Programs\WPA.NA.Loans\Quinault #2 - WA\Quinault#2\_030511.N03  
 Y:\shared\Anemometer\_Loan\_Programs\WPA.NA.Loans\Quinault #2 - WA\Quinault#2\_030626.N03  
 Y:\shared\Anemometer\_Loan\_Programs\WPA.NA.Loans\Quinault #2 - WA\Quinault#2\_030722.N03  
 Y:\shared\Anemometer\_Loan\_Programs\WPA.NA.Loans\Quinault #2 - WA\Quinault#2\_030218.N03  
 Y:\shared\Anemometer\_Loan\_Programs\WPA.NA.Loans\Quinault #2 - WA\Quinault#2\_031103.N03  
 Y:\shared\Anemometer\_Loan\_Programs\WPA.NA.Loans\Quinault #2 - WA\Quinault#2\_030830.N03  
 Y:\shared\Anemometer\_Loan\_Programs\WPA.NA.Loans\Quinault #2 - WA\Quinault#2\_031211.N03  
 Y:\shared\Anemometer\_Loan\_Programs\WPA.NA.Loans\Quinault #2 - WA\Quinault#2\_040416.N04  
 Y:\shared\Anemometer\_Loan\_Programs\WPA.NA.Loans\Quinault #2 - WA\Quinault#2\_040602.N04  
 Y:\shared\Anemometer\_Loan\_Programs\WPA.NA.Loans\Quinault #2 - WA\Quinault#2\_040209.N04

Printed/Page

08/05/2004 11:19 AM / 4

Licensed user:

**National Renewable Energy Laboratory**  
 1617 Cole Blvd. (MS3811)  
 US-GOLDEN, CO 80401  
 +1 303-384-7027

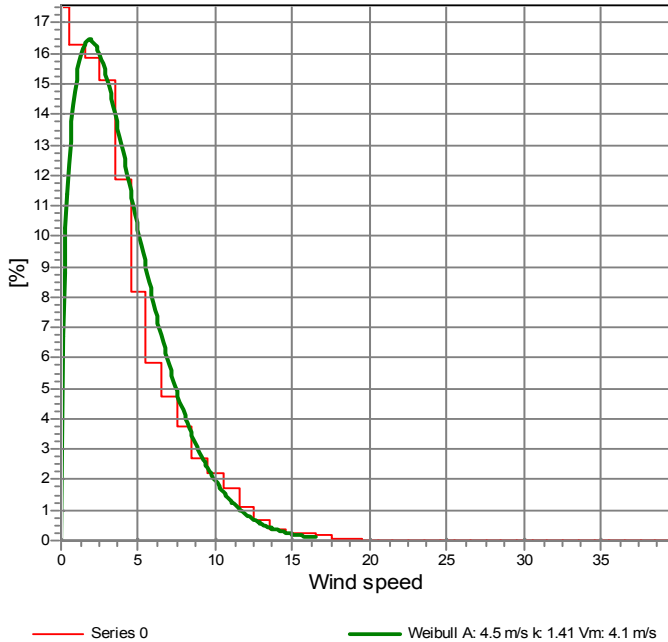
Calculated:

08/05/2004 11:19 AM/

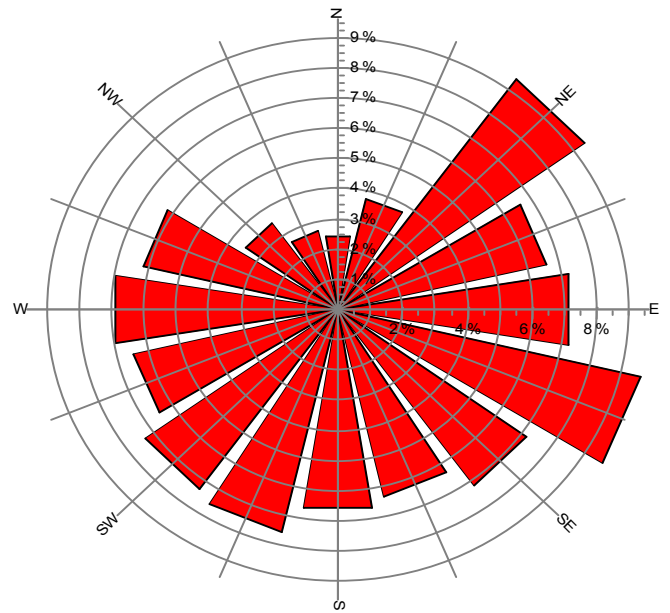
**Meteo data report, height: 20.0 m**

Name of meteo object: Quinault - Crane Creek

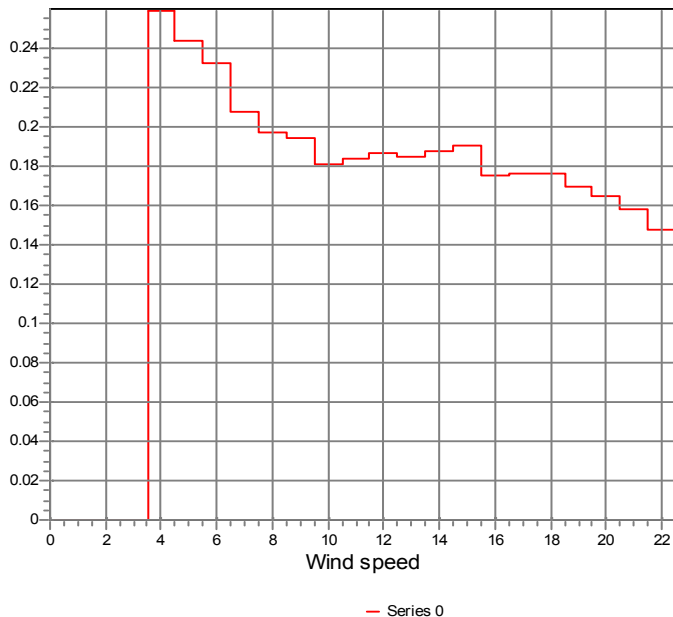
Frequency



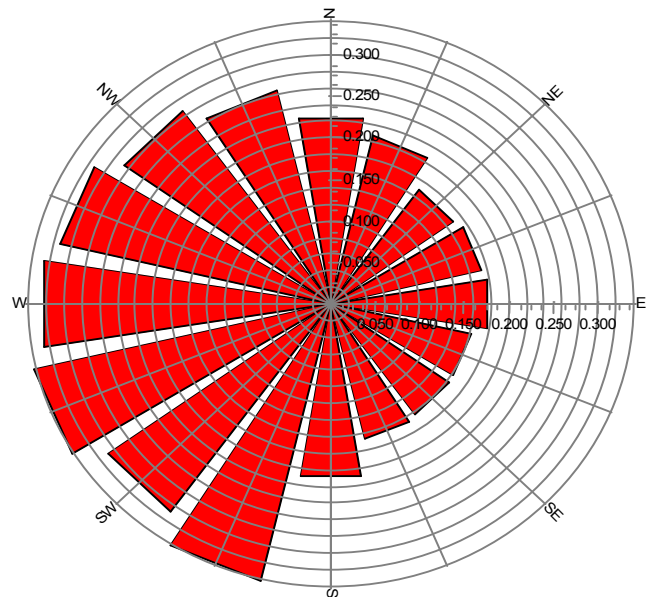
Frequency



Turbulence  
V>4.0 m/s



Turbulence  
V>4.0 m/s



Project:

**Quinault-Crane Creek**

Description:

Data from file(s)  
 Y:\shared\Anemometer\_Loan\_Programs\WPA.NA.Loans\Quinault #2 - WA\Quinault#2 030828.N03  
 Y:\shared\Anemometer\_Loan\_Programs\WPA.NA.Loans\Quinault #2 - WA\Quinault#2 030311.N03  
 Y:\shared\Anemometer\_Loan\_Programs\WPA.NA.Loans\Quinault #2 - WA\Quinault#2 030414.N03  
 Y:\shared\Anemometer\_Loan\_Programs\WPA.NA.Loans\Quinault #2 - WA\Quinault#2 030511.N03  
 Y:\shared\Anemometer\_Loan\_Programs\WPA.NA.Loans\Quinault #2 - WA\Quinault#2 030626.N03  
 Y:\shared\Anemometer\_Loan\_Programs\WPA.NA.Loans\Quinault #2 - WA\Quinault#2 030722.N03  
 Y:\shared\Anemometer\_Loan\_Programs\WPA.NA.Loans\Quinault #2 - WA\Quinault#2 030218.N03  
 Y:\shared\Anemometer\_Loan\_Programs\WPA.NA.Loans\Quinault #2 - WA\Quinault#2 031103.N03  
 Y:\shared\Anemometer\_Loan\_Programs\WPA.NA.Loans\Quinault #2 - WA\Quinault#2 030330.N03  
 Y:\shared\Anemometer\_Loan\_Programs\WPA.NA.Loans\Quinault #2 - WA\Quinault#2 031211.N03  
 Y:\shared\Anemometer\_Loan\_Programs\WPA.NA.Loans\Quinault #2 - WA\Quinault#2 040416.N04  
 Y:\shared\Anemometer\_Loan\_Programs\WPA.NA.Loans\Quinault #2 - WA\Quinault#2 040602.N04  
 Y:\shared\Anemometer\_Loan\_Programs\WPA.NA.Loans\Quinault #2 - WA\Quinault#2 040209.N04

Printed/Page

08/05/2004 11:19 AM / 5

Licensed user:

**National Renewable Energy Laboratory**  
 1617 Cole Blvd. (MS3811)  
 US-GOLDEN, CO 80401  
 +1 303-384-7027

Calculated:

08/05/2004 11:19 AM/

### Meteo data report, height: 20.0 m

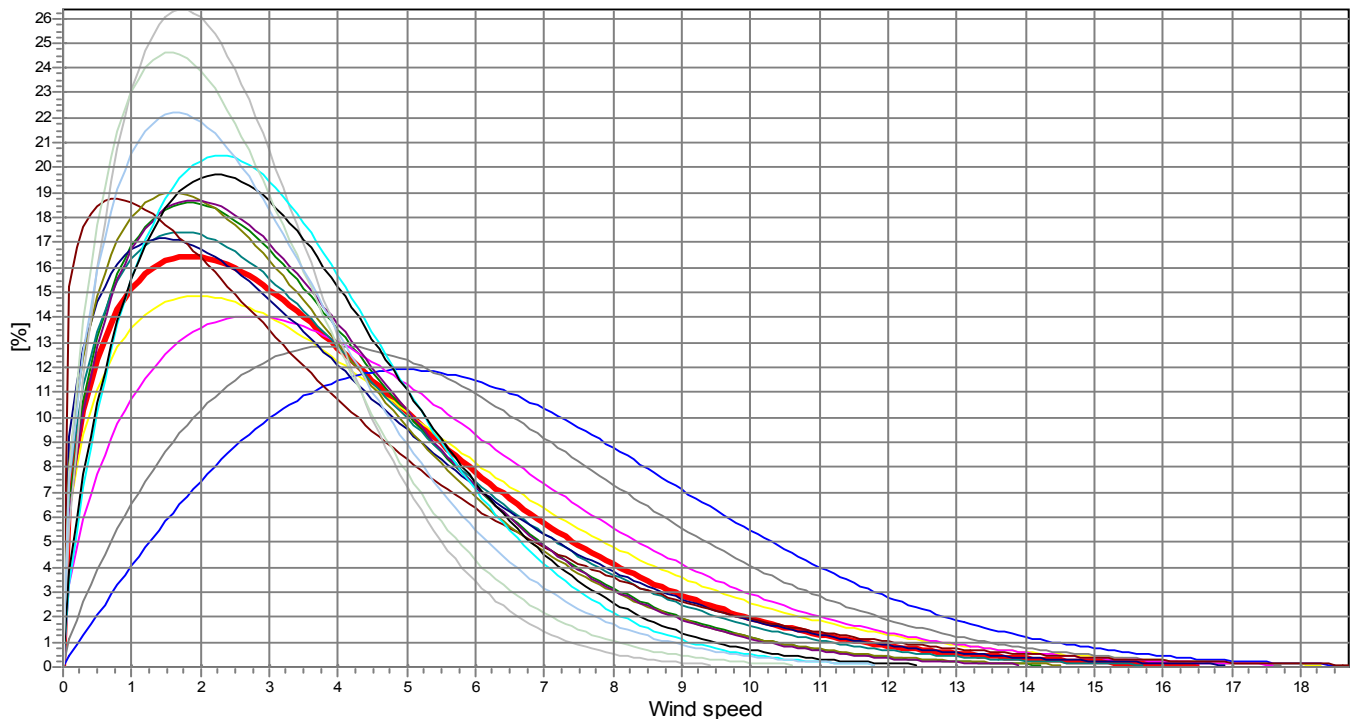
Name of meteo object: Quinault - Crane Creek

#### Weibull Data

k-parameter correction: 0.0080/m

Sector	A- parameter [m/s]	Mean wind speed [m/s]	k- parameter	Frequency	Frequency [%]	Wind shear
0-N	3.99	3.61	1.471	2.47	2.6	0.00
1-NNE	4.95	4.51	1.387	3.79	4.1	0.00
2-NE	7.12	6.32	1.967	9.42	10.1	0.00
3-ENE	6.23	5.54	1.787	6.61	7.1	0.00
4-E	5.35	4.81	1.545	7.25	7.8	0.00
5-ESE	4.22	3.85	1.399	9.61	10.3	0.00
6-SE	4.28	3.94	1.320	7.18	7.7	0.00
7-SSE	4.09	3.87	1.165	6.34	6.8	0.00
8-S	0.00	0.00	0.000	6.64	7.1	0.00
9-SSW	3.87	3.53	1.409	7.58	8.1	0.00
10-SW	3.98	3.59	1.495	7.31	7.8	0.00
11-WSW	2.96	2.64	1.688	6.47	6.9	0.00
12-W	3.83	3.41	1.712	6.96	7.5	0.00
13-WNW	3.92	3.50	1.657	6.20	6.6	0.00
14-NW	3.06	2.75	1.545	3.50	3.8	0.00
15-NNW	3.37	3.04	1.515	2.66	2.8	0.00
mean	4.47	4.07	1.407	93.36	100.0	0.00

Frequency



— Total A: 4.5 m/s k: 1.41 Vm: 4.1 m/s	— N A: 4.0 m/s k: 1.47 Vm: 3.6 m/s	— NNE A: 4.9 m/s k: 1.39 Vm: 4.5 m/s	— NE A: 7.1 m/s k: 1.97 Vm: 6.3 m/s
— ENE A: 6.2 m/s k: 1.79 Vm: 5.5 m/s	— E A: 5.3 m/s k: 1.55 Vm: 4.8 m/s	— ESE A: 4.2 m/s k: 1.40 Vm: 3.8 m/s	— SE A: 4.3 m/s k: 1.32 Vm: 3.9 m/s
— SSE A: 4.1 m/s k: 1.17 Vm: 3.9 m/s	— S A: 0.0 m/s k: 0.00 Vm: 0.0 m/s	— SSW A: 3.9 m/s k: 1.41 Vm: 3.5 m/s	— SW A: 4.0 m/s k: 1.50 Vm: 3.6 m/s
— WSW A: 3.0 m/s k: 1.69 Vm: 2.6 m/s	— W A: 3.8 m/s k: 1.71 Vm: 3.4 m/s	— WNW A: 3.9 m/s k: 1.66 Vm: 3.5 m/s	— NW A: 3.1 m/s k: 1.55 Vm: 2.7 m/s
— NNW A: 3.4 m/s k: 1.51 Vm: 3.0 m/s			