

Project: **Fort Belknap**
 Description: Data from file(s)
 Y:\5000\shared\Anemometer_Loan_Programs\Completed_Sites\Native American\Fort Belknap - MT\Belknap Wind Data\Belknap 010207.csv
 Y:\5000\shared\Anemometer_Loan_Programs\Completed_Sites\Native American\Fort Belknap - MT\Belknap Wind Data\Belknap 010307.csv
 Y:\5000\shared\Anemometer_Loan_Programs\Completed_Sites\Native American\Fort Belknap - MT\Belknap Wind Data\Belknap 010419.csv
 Y:\5000\shared\Anemometer_Loan_Programs\Completed_Sites\Native American\Fort Belknap - MT\Belknap Wind Data\Belknap 010602.csv
 Y:\5000\shared\Anemometer_Loan_Programs\Completed_Sites\Native American\Fort Belknap - MT\Belknap Wind Data\Belknap 010831.csv
 Y:\5000\shared\Anemometer_Loan_Programs\Completed_Sites\Native American\Fort Belknap - MT\Belknap Wind Data\Belknap 011101.csv
 Y:\5000\shared\Anemometer_Loan_Programs\Completed_Sites\Native American\Fort Belknap - MT\Belknap Wind Data\Belknap 011204.csv
 Y:\5000\shared\Anemometer_Loan_Programs\Completed_Sites\Native American\Fort Belknap - MT\Belknap Wind Data\Belknap 020301.csv
 Y:\5000\shared\Anemometer_Loan_Programs\Completed_Sites\Native American\Fort Belknap - MT\Belknap Wind Data\Belknap 021029.csv

Printed/Page
 10/16/2006 3:00 PM / 1

Licensed user:
National Renewable Energy Laboratory
 1617 Cole Blvd. (MS3811)
 US-GOLDEN, CO 80401
 +1 303-384-7027

Calculated:
 10/16/2006 3:00 PM/

Meteo data report, height: 20.0 m

Name of meteo object: Fort Belknap #1

Data from: 02/07/2001 11:20 AM Data to: 11/06/2002 1:20 AM Observations: 83440 Observations per day: 144 Recovery rate: 91%

day	02/01	03/01	04/01	05/01	06/01	07/01	08/01	09/01	10/01	11/01	12/01	01/02	02/02	03/02	04/02	05/02	06/02	07/02	08/02	09/02	10/02	11/02
1		(142)	144	144	144	144	(0)	144	144	144	144	(143)	144	(124)	144	144	144	144	144	144	144	144
2		(142)	144	144	144	144	(0)	144	144	144	144	144	(143)	144	144	144	144	144	(138)	144	144	(140)
3		144	144	144	144	144	(0)	144	144	144	144	144	144	144	144	144	(131)	144	144	144	144	144
4		144	144	144	(143)	144	(0)	144	(139)	144	144	144	(143)	(138)	(140)	144	144	144	144	(137)	144	
5		144	144	144	(143)	144	(0)	(143)	(143)	144	(141)	144	144	(123)	144	(138)	144	144	144	144	144	144
6		144	144	144	(136)	144	(0)	(139)	144	144	144	144	(6)	144	(142)	144	144	144	(141)	144	(9)	
7	(71)	(140)	144	144	144	144	(0)	144	144	144	144	144	(119)	(140)	144	144	144	144	144	(136)	144	
8	(130)	(133)	144	144	144	(139)	(0)	144	144	144	144	(114)	(101)	144	144	144	144	144	144	144	144	144
9	(133)	144	144	144	144	(134)	(0)	144	144	144	144	144	(75)	144	144	(142)	144	144	144	(141)	(143)	144
10	(141)	144	144	(142)	144	144	(0)	144	144	144	(140)	144	144	144	(143)	144	144	144	144	144	144	144
11	(142)	144	144	144	(142)	(132)	(0)	144	144	144	(140)	144	144	144	144	(142)	144	144	(141)	(143)	144	144
12	144	144	144	144	144	(143)	(0)	144	144	144	144	144	144	144	144	(143)	144	(137)	144	144	144	144
13	(141)	144	144	144	(142)	(142)	(0)	(142)	144	144	144	144	(135)	144	144	144	144	144	(143)	144	144	144
14	144	(143)	144	144	(141)	144	(0)	(140)	144	144	144	(143)	144	(79)	144	144	144	(143)	144	144	(77)	
15	144	(143)	144	144	144	(142)	(0)	(136)	(143)	144	(143)	144	144	(139)	144	144	144	(142)	144	(141)	(0)	
16	144	144	(142)	144	144	144	(0)	(131)	144	144	144	144	144	(143)	144	144	144	(142)	(141)	(142)	(0)	
17	(141)	144	144	144	144	144	(0)	144	144	144	(142)	(140)	(141)	(113)	144	144	144	(134)	144	144	(0)	
18	144	144	(143)	144	144	144	(0)	144	144	144	144	144	144	(143)	(141)	144	144	144	144	144	(0)	
19	144	144	144	(143)	144	(82)	(0)	144	144	144	(143)	144	144	(143)	144	144	144	144	144	144	(0)	
20	144	144	144	144	(140)	(0)	(0)	144	144	144	144	144	144	(141)	(143)	144	144	144	144	144	(0)	
21	144	144	144	144	144	(0)	(0)	144	144	144	144	144	144	(139)	144	144	144	144	(143)	144	(0)	
22	(143)	144	144	144	144	(0)	(0)	144	144	(133)	(142)	(143)	144	(135)	144	(102)	144	144	(140)	144	(0)	
23	144	144	144	(140)	(142)	(0)	(0)	144	144	(139)	(137)	144	144	(141)	144	144	(141)	144	(141)	144	(0)	
24	(28)	144	144	144	144	(0)	(0)	144	144	(139)	(138)	144	144	144	144	144	(143)	144	144	(142)	(0)	
25	(92)	144	144	144	144	(0)	(0)	144	(138)	144	(138)	144	144	144	144	144	144	(141)	144	144	(0)	
26	(143)	144	144	144	144	(0)	(0)	(143)	144	(126)	(143)	(143)	144	144	144	(143)	144	144	144	(0)		
27	144	144	144	144	144	(0)	(0)	144	144	(137)	(141)	(123)	144	144	(140)	144	(143)	(121)	144	144	(0)	
28	144	144	144	144	144	(0)	(0)	144	144	144	144	(132)	(142)	144	144	(143)	(143)	144	144	144	(0)	
29		144	144	144	144	(0)	(0)	144	144	144	(128)	144		144	144	144	144	144	144	144	(87)	
30		144	144	144	144	(0)	(0)	(136)	144	144	(128)	144		144	(143)	144	144	144	(138)	144	(142)	
31		144		144		(0)	(121)		144		(130)	144		144		144		144	144		144	
%	(93)	(100)	(100)	(100)	(99)	(59)	(3)	(99)	(100)	(99)	(98)	(99)	(97)	(91)	(100)	(99)	(100)	(99)	(99)	(100)	(52)	(100)

Project:

Fort Belknap

Description:

Data from file(s)

Y:\5000\shared\Anemometer_Loan_Programs\Completed_Sites\Native American\Fort Belknap - MT\Belknap Wind Data\Belknap 010207.csv
 Y:\5000\shared\Anemometer_Loan_Programs\Completed_Sites\Native American\Fort Belknap - MT\Belknap Wind Data\Belknap 010307.csv
 Y:\5000\shared\Anemometer_Loan_Programs\Completed_Sites\Native American\Fort Belknap - MT\Belknap Wind Data\Belknap 010419.csv
 Y:\5000\shared\Anemometer_Loan_Programs\Completed_Sites\Native American\Fort Belknap - MT\Belknap Wind Data\Belknap 010602.csv
 Y:\5000\shared\Anemometer_Loan_Programs\Completed_Sites\Native American\Fort Belknap - MT\Belknap Wind Data\Belknap 010831.csv
 Y:\5000\shared\Anemometer_Loan_Programs\Completed_Sites\Native American\Fort Belknap - MT\Belknap Wind Data\Belknap 011101.csv
 Y:\5000\shared\Anemometer_Loan_Programs\Completed_Sites\Native American\Fort Belknap - MT\Belknap Wind Data\Belknap 011204.csv
 Y:\5000\shared\Anemometer_Loan_Programs\Completed_Sites\Native American\Fort Belknap - MT\Belknap Wind Data\Belknap 020301.csv
 Y:\5000\shared\Anemometer_Loan_Programs\Completed_Sites\Native American\Fort Belknap - MT\Belknap Wind Data\Belknap 021029.csv

Printed/Page

10/16/2006 3:00 PM / 2

Licensed user:

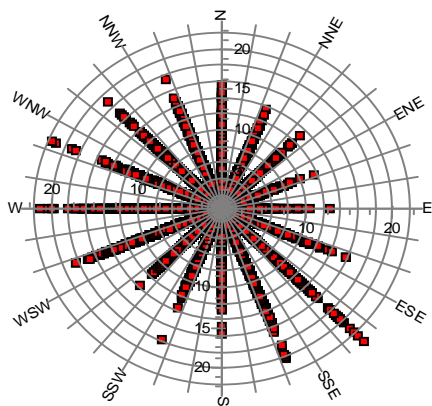
National Renewable Energy Laboratory
 1617 Cole Blvd. (MS3811)
 US-GOLDEN, CO 80401
 +1 303-384-7027

Calculated:

10/16/2006 3:00 PM/

Meteo data report, height: 20.0 m

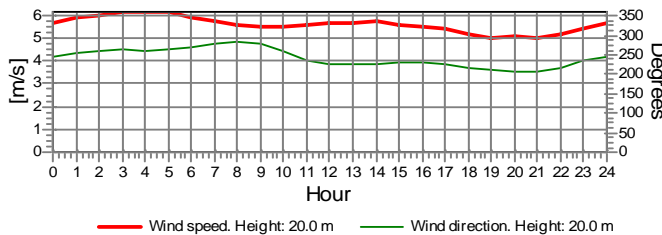
Name of meteo object: Fort Belknap #1



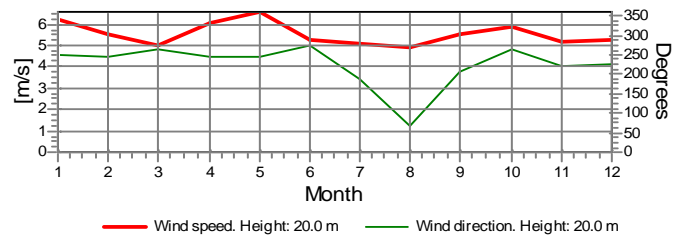
Wind speed [m/s]

Monthly mean values of wind speed in m/s

Month	2001	2002	mean	mean of months
Jan		6.2	6.2	6.2
Feb	4.0	6.6	5.5	5.3
Mar	5.2	4.8	5.0	5.0
Apr	6.0	6.1	6.1	6.1
May	6.8	6.4	6.6	6.6
Jun	5.0	5.5	5.3	5.3
Jul	4.6	5.3	5.1	5.0
Aug	4.1	5.0	4.9	4.5
Sep	5.6	5.5	5.5	5.5
Oct	6.1	5.5	5.9	5.8
Nov	5.3	4.7	5.2	5.0
Dec	5.3		5.3	5.3
mean, all data	5.5	5.7	5.6	
mean of months	5.3	5.6		5.5

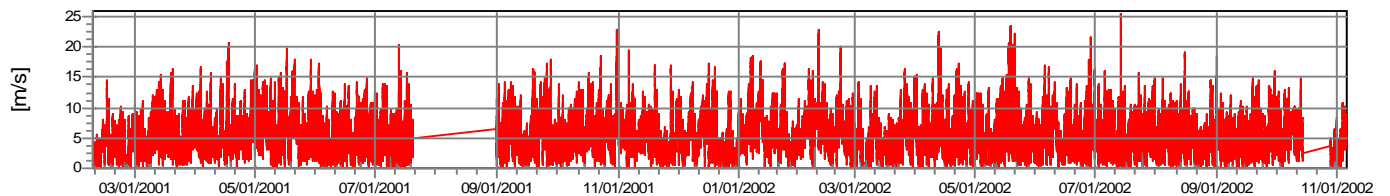


— Wind speed. Height: 20.0 m — Wind direction. Height: 20.0 m

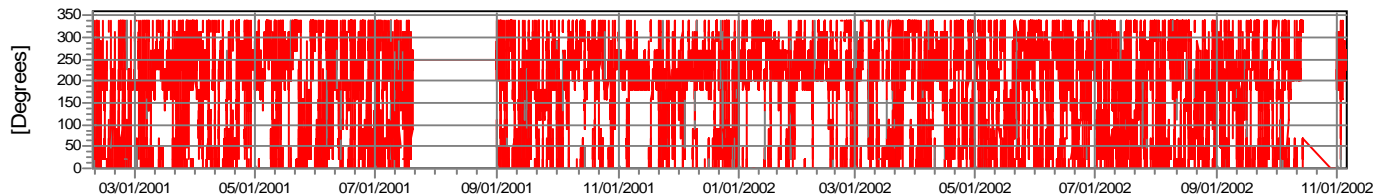


— Wind speed. Height: 20.0 m — Wind direction. Height: 20.0 m

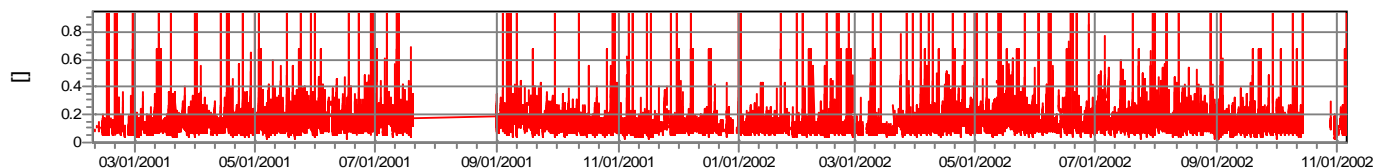
Wind speed



Wind direction



**Turbulence intensity
V>4.0 m/s**



Project:

Fort Belknap

Description:

Data from file(s)

Y:\5000\shared\Anemometer_Loan_Programs\Completed_Sites\Native American\Fort Belknap - MT\Belknap Wind Data\Belknap 010207.csv
 Y:\5000\shared\Anemometer_Loan_Programs\Completed_Sites\Native American\Fort Belknap - MT\Belknap Wind Data\Belknap 010307.csv
 Y:\5000\shared\Anemometer_Loan_Programs\Completed_Sites\Native American\Fort Belknap - MT\Belknap Wind Data\Belknap 010419.csv
 Y:\5000\shared\Anemometer_Loan_Programs\Completed_Sites\Native American\Fort Belknap - MT\Belknap Wind Data\Belknap 010602.csv
 Y:\5000\shared\Anemometer_Loan_Programs\Completed_Sites\Native American\Fort Belknap - MT\Belknap Wind Data\Belknap 010831.csv
 Y:\5000\shared\Anemometer_Loan_Programs\Completed_Sites\Native American\Fort Belknap - MT\Belknap Wind Data\Belknap 011101.csv
 Y:\5000\shared\Anemometer_Loan_Programs\Completed_Sites\Native American\Fort Belknap - MT\Belknap Wind Data\Belknap 011204.csv
 Y:\5000\shared\Anemometer_Loan_Programs\Completed_Sites\Native American\Fort Belknap - MT\Belknap Wind Data\Belknap 020301.csv
 Y:\5000\shared\Anemometer_Loan_Programs\Completed_Sites\Native American\Fort Belknap - MT\Belknap Wind Data\Belknap 021029.csv

Printed/Page

10/16/2006 3:00 PM / 3

Licensed user:

National Renewable Energy Laboratory
 1617 Cole Blvd. (MS3811)
 US-GOLDEN, CO 80401
 +1 303-384-7027

Calculated:

10/16/2006 3:00 PM/

Meteo data report, height: 20.0 m

Name of meteo object: Fort Belknap #1

Frequency

Wind speed	Sum	N	NNE	NE	ENE	E	ESE	SE	SSE	S	SSW	SW	WSW	W	WNW	NW	NNW
0.00 - 0.49	519	51	37	36	59	41	21	22	20	31	26	29	19	31	23	27	46
0.50 - 1.49	4,401	388	396	451	366	287	221	189	231	268	273	269	211	196	168	203	284
1.50 - 2.49	7,168	529	715	780	648	446	278	199	222	389	622	649	481	329	245	291	345
2.50 - 3.49	10,374	600	1,075	900	825	670	326	239	331	616	1,431	1,220	661	417	323	328	412
3.50 - 4.49	11,556	560	1,077	939	633	519	298	285	302	694	1,943	1,666	1,001	502	371	406	360
4.50 - 5.49	11,390	512	990	814	351	323	275	340	358	861	1,703	1,813	1,187	620	491	386	366
5.50 - 6.49	10,065	491	813	540	158	164	280	380	333	957	1,541	1,155	1,159	730	488	411	465
6.50 - 7.49	7,496	371	479	252	72	73	216	268	364	860	1,159	723	905	617	350	377	410
7.50 - 8.49	5,817	359	383	164	45	33	122	239	291	549	854	453	733	592	308	322	370
8.50 - 9.49	4,246	250	214	91	14	17	77	231	269	311	579	268	493	575	244	276	337
9.50 - 10.49	2,965	214	110	29	14	14	54	160	250	141	299	136	361	499	210	211	263
10.50 - 11.49	2,250	154	89	18	5	12	47	125	241	70	104	77	303	444	165	211	185
11.50 - 12.49	1,409	90	44	12	3	4	40	93	177	29	21	32	153	265	147	139	160
12.50 - 13.49	930	63	16	7	0	3	15	84	134	24	6	8	118	200	65	96	91
13.50 - 14.49	577	44	8	0	0	0	11	51	86	8	4	3	80	117	45	54	66
14.50 - 15.49	305	6	0	0	0	0	6	30	50	1	1	0	48	82	28	25	28
15.50 - 16.49	238	8	0	0	0	0	4	13	39	9	1	0	41	71	17	25	10
16.50 - 17.49	174	1	0	0	0	0	2	8	36	4	0	1	27	56	6	14	19
17.50 - 18.49	97	0	0	0	0	0	0	29	16	0	1	0	7	29	5	1	9
18.50 - 19.49	81	0	0	0	0	0	0	44	17	0	0	0	4	8	4	2	2
19.50 - 20.49	56	0	0	0	0	0	0	28	10	0	1	0	3	11	3	0	0
20.50 - 21.49	26	0	0	0	0	0	0	12	3	0	0	0	0	8	2	1	0
21.50 - 22.49	20	0	0	0	0	0	0	11	0	0	2	0	0	3	4	0	0
22.50 - 23.49	12	0	0	0	0	0	0	9	0	0	0	0	0	2	1	0	0
23.50 - 24.49	0	0	0	0	0	0	0	0	0	0	0	0	0	0	0	0	0
24.50 - 25.49	0	0	0	0	0	0	0	0	0	0	0	0	0	0	0	0	0
25.50 - 26.49	2	0	0	0	0	0	0	0	0	0	0	0	1	1	0	0	0
Sum	82,174	4,691	6,446	5,033	3,193	2,606	2,293	3,089	3,780	5,822	10,571	8,502	7,996	6,405	3,713	3,806	4,228

Turbulence

Wind speed	Sum	N	NNE	NE	ENE	E	ESE	SE	SSE	S	SSW	SW	WSW	W	WNW	NW	NNW
0.00 - 0.49	0.000	0.000	0.000	0.000	0.000	0.000	0.000	0.000	0.000	0.000	0.000	0.000	0.000	0.000	0.000	0.000	0.000
0.50 - 1.49	0.000	0.000	0.000	0.000	0.000	0.000	0.000	0.000	0.000	0.000	0.000	0.000	0.000	0.000	0.000	0.000	0.000
1.50 - 2.49	0.000	0.000	0.000	0.000	0.000	0.000	0.000	0.000	0.000	0.000	0.000	0.000	0.000	0.000	0.000	0.000	0.000
2.50 - 3.49	0.000	0.000	0.000	0.000	0.000	0.000	0.000	0.000	0.000	0.000	0.000	0.000	0.000	0.000	0.000	0.000	0.000
3.50 - 4.49	0.146	0.163	0.143	0.134	0.150	0.169	0.208	0.160	0.182	0.143	0.133	0.132	0.145	0.159	0.154	0.148	0.158
4.50 - 5.49	0.138	0.143	0.132	0.126	0.149	0.176	0.196	0.173	0.175	0.128	0.125	0.126	0.137	0.140	0.139	0.142	0.155
5.50 - 6.49	0.140	0.131	0.133	0.128	0.176	0.206	0.193	0.177	0.180	0.133	0.124	0.128	0.143	0.147	0.130	0.138	0.145
6.50 - 7.49	0.127	0.113	0.108	0.122	0.173	0.200	0.186	0.168	0.167	0.117	0.107	0.115	0.130	0.134	0.124	0.133	0.122
7.50 - 8.49	0.124	0.110	0.104	0.117	0.180	0.179	0.185	0.159	0.165	0.117	0.102	0.116	0.130	0.130	0.128	0.129	0.121
8.50 - 9.49	0.129	0.119	0.103	0.111	0.204	0.202	0.188	0.166	0.157	0.128	0.109	0.118	0.128	0.135	0.138	0.127	0.124
9.50 - 10.49	0.125	0.107	0.098	0.109	0.186	0.208	0.171	0.157	0.152	0.125	0.101	0.115	0.125	0.124	0.134	0.127	0.115
10.50 - 11.49	0.128	0.112	0.095	0.117	0.182	0.192	0.173	0.153	0.151	0.134	0.101	0.111	0.127	0.128	0.131	0.124	0.118
11.50 - 12.49	0.127	0.099	0.090	0.121	0.224	0.193	0.150	0.146	0.151	0.133	0.122	0.109	0.128	0.126	0.128	0.121	0.115
12.50 - 13.49	0.127	0.106	0.099	0.178		0.215	0.163	0.140	0.145	0.143	0.119	0.122	0.129	0.126	0.120	0.118	0.110
13.50 - 14.49	0.127	0.095	0.101				0.151	0.140	0.149	0.136	0.119	0.184	0.135	0.125	0.123	0.116	0.116
14.50 - 15.49	0.127	0.099					0.181	0.147	0.142	0.138	0.174		0.125	0.120	0.121	0.115	0.114
15.50 - 16.49	0.127	0.094					0.154	0.158	0.140	0.140	0.158		0.126	0.123	0.124	0.112	0.109
16.50 - 17.49	0.126	0.109					0.141	0.152	0.146	0.148		0.148	0.122	0.124	0.131	0.104	0.101
17.50 - 18.49	0.135							0.149	0.141		0.120		0.130	0.131	0.130	0.106	0.102
18.50 - 19.49	0.135							0.140	0.142				0.132	0.111	0.116	0.128	0.107
19.50 - 20.49	0.126							0.131	0.131		0.119		0.121	0.108	0.136		
20.50 - 21.49	0.126							0.132	0.132					0.117	0.112	0.135	
21.50 - 22.49	0.134							0.135			0.181			0.112	0.126		
22.50 - 23.49	0.129							0.137						0.094	0.120		
23.50 - 24.49																	
24.50 - 25.49																	
25.50 - 26.49	0.141													0.146	0.135		
Sum	0.134	0.125	0.123	0.126	0.159	0.183	0.189	0.162	0.163	0.127	0.118	0.124	0.134	0.134	0.133	0.132	0.130

Project:
Fort Belknap

Description:
Data from file(s)
Y:\5000\shared\Anemometer_Loan_Programs\Completed_Sites\Native American\Fort Belknap - MT\Belknap Wind Data\Belknap 010207.csv
Y:\5000\shared\Anemometer_Loan_Programs\Completed_Sites\Native American\Fort Belknap - MT\Belknap Wind Data\Belknap 010307.csv
Y:\5000\shared\Anemometer_Loan_Programs\Completed_Sites\Native American\Fort Belknap - MT\Belknap Wind Data\Belknap 010419.csv
Y:\5000\shared\Anemometer_Loan_Programs\Completed_Sites\Native American\Fort Belknap - MT\Belknap Wind Data\Belknap 010602.csv
Y:\5000\shared\Anemometer_Loan_Programs\Completed_Sites\Native American\Fort Belknap - MT\Belknap Wind Data\Belknap 010831.csv
Y:\5000\shared\Anemometer_Loan_Programs\Completed_Sites\Native American\Fort Belknap - MT\Belknap Wind Data\Belknap 011101.csv
Y:\5000\shared\Anemometer_Loan_Programs\Completed_Sites\Native American\Fort Belknap - MT\Belknap Wind Data\Belknap 011204.csv
Y:\5000\shared\Anemometer_Loan_Programs\Completed_Sites\Native American\Fort Belknap - MT\Belknap Wind Data\Belknap 020301.csv
Y:\5000\shared\Anemometer_Loan_Programs\Completed_Sites\Native American\Fort Belknap - MT\Belknap Wind Data\Belknap 021029.csv

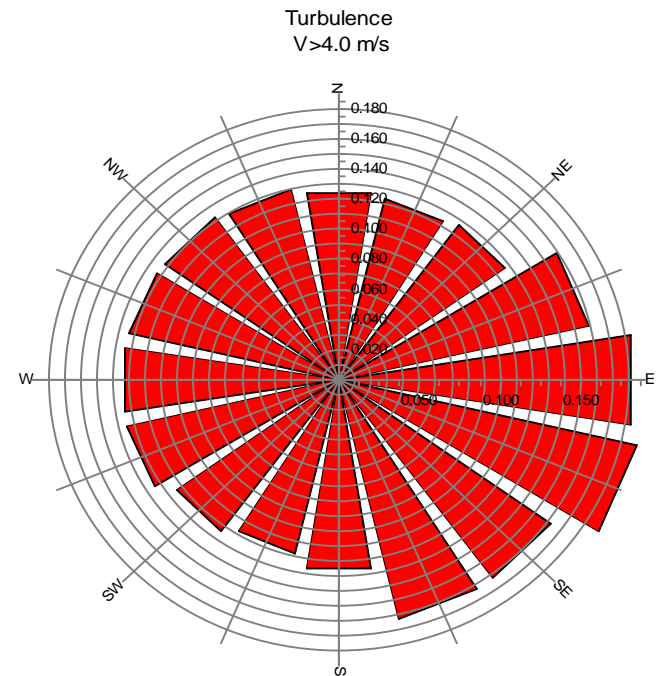
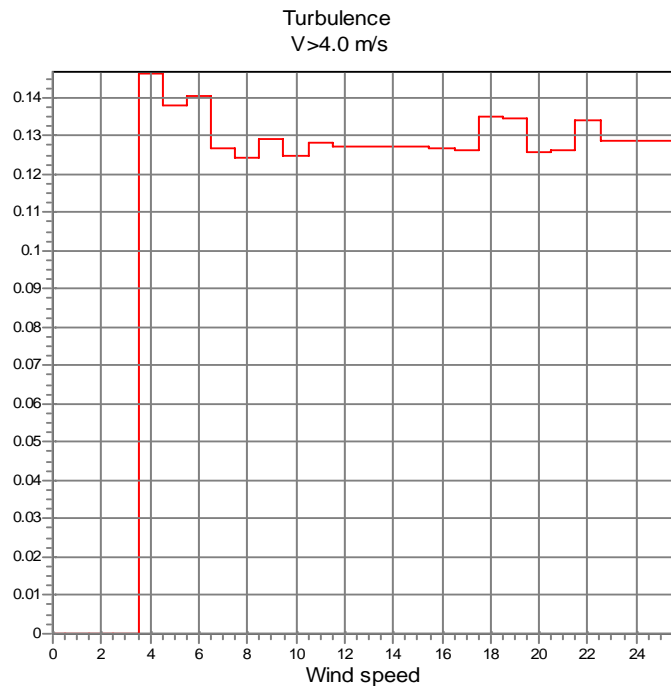
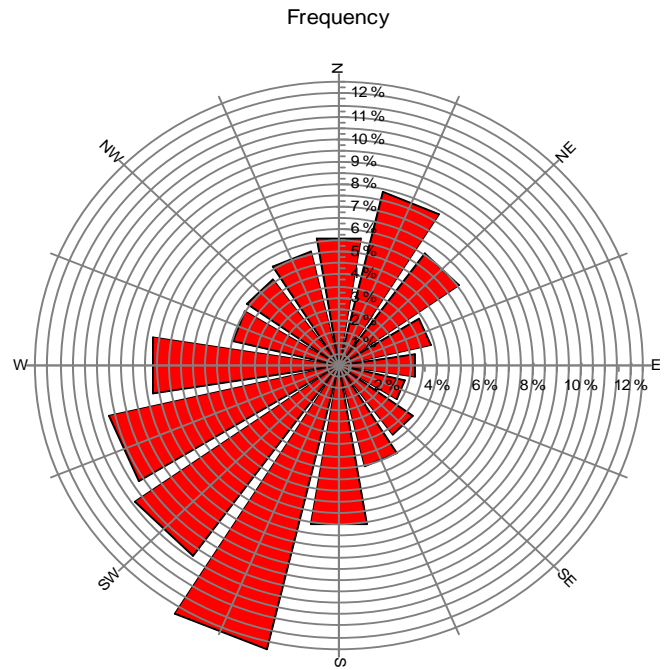
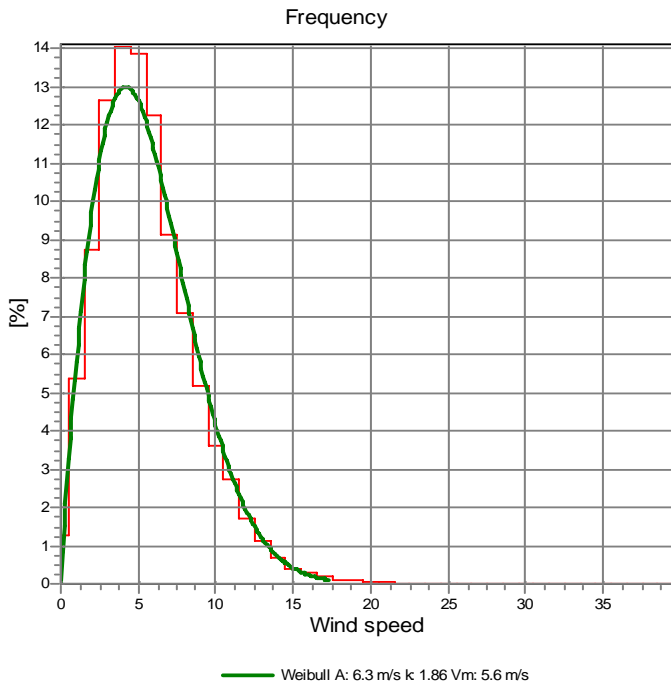
Printed/Page
10/16/2006 3:00 PM / 4

Licensed user:
National Renewable Energy Laboratory
1617 Cole Blvd. (MS3811)
US-GOLDEN, CO 80401
+1 303-384-7027

Calculated:
10/16/2006 3:00 PM/

Meteo data report, height: 20.0 m

Name of meteo object: Fort Belknap #1



Project:

Fort Belknap

Description:

Data from file(s)
 Y:\5000\shared\Anemometer_Loan_Programs\Completed_Sites\Native American\Fort Belknap - MT\Belknap Wind Data\Belknap 010207.csv
 Y:\5000\shared\Anemometer_Loan_Programs\Completed_Sites\Native American\Fort Belknap - MT\Belknap Wind Data\Belknap 010307.csv
 Y:\5000\shared\Anemometer_Loan_Programs\Completed_Sites\Native American\Fort Belknap - MT\Belknap Wind Data\Belknap 010419.csv
 Y:\5000\shared\Anemometer_Loan_Programs\Completed_Sites\Native American\Fort Belknap - MT\Belknap Wind Data\Belknap 010602.csv
 Y:\5000\shared\Anemometer_Loan_Programs\Completed_Sites\Native American\Fort Belknap - MT\Belknap Wind Data\Belknap 010831.csv
 Y:\5000\shared\Anemometer_Loan_Programs\Completed_Sites\Native American\Fort Belknap - MT\Belknap Wind Data\Belknap 011101.csv
 Y:\5000\shared\Anemometer_Loan_Programs\Completed_Sites\Native American\Fort Belknap - MT\Belknap Wind Data\Belknap 011204.csv
 Y:\5000\shared\Anemometer_Loan_Programs\Completed_Sites\Native American\Fort Belknap - MT\Belknap Wind Data\Belknap 020301.csv
 Y:\5000\shared\Anemometer_Loan_Programs\Completed_Sites\Native American\Fort Belknap - MT\Belknap Wind Data\Belknap 021029.csv

Printed/Page

10/16/2006 3:00 PM / 5

Licensed user:

National Renewable Energy Laboratory
 1617 Cole Blvd. (MS3811)
 US-GOLDEN, CO 80401
 +1 303-384-7027

Calculated:

10/16/2006 3:00 PM/

Meteo data report, height: 20.0 m

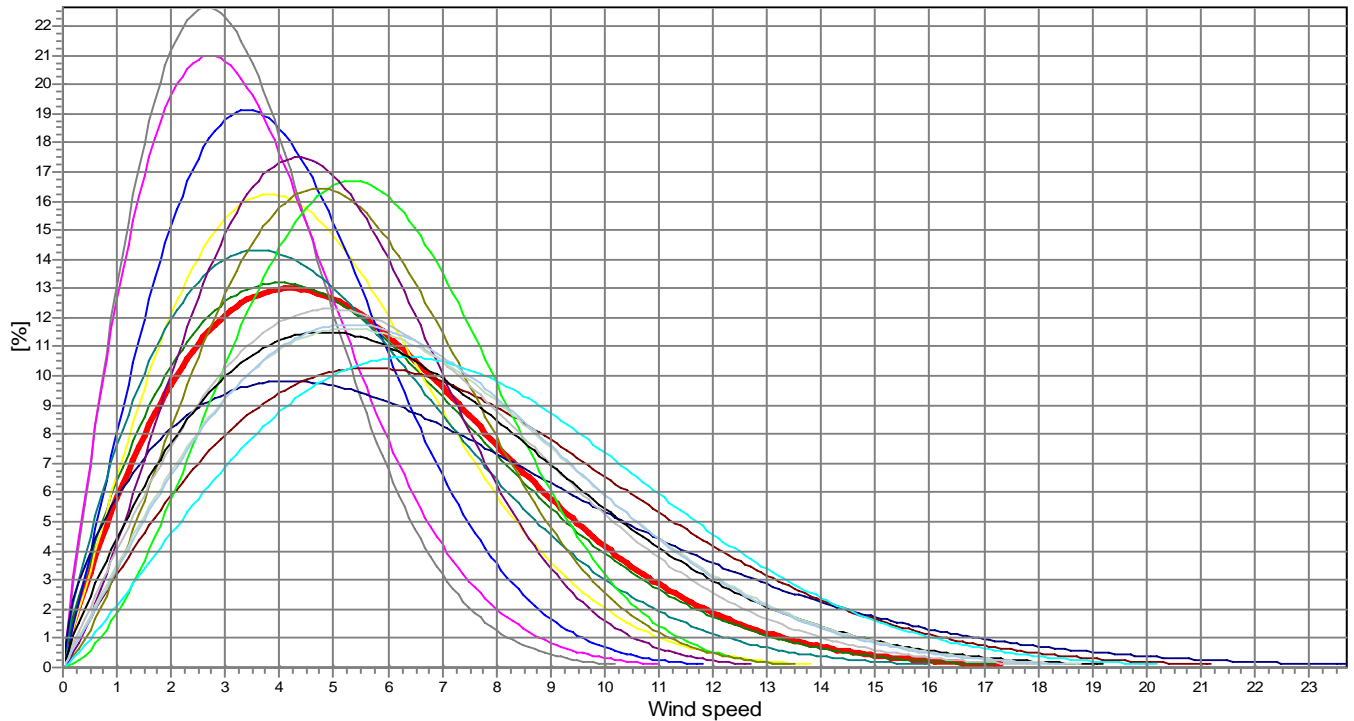
Name of meteo object: Fort Belknap #1

Weibull Data

k-parameter correction: 0.0080/m

Sector	A- parameter [m/s]	Mean wind speed [m/s]	k- parameter	Frequency	Frequency [%]	Wind shear
0-N	6.15	5.46	1.824	5.71	5.7	0.00
1-NNE	5.33	4.73	2.028	7.84	7.8	0.00
2-NE	4.64	4.11	2.099	6.12	6.1	0.00
3-ENE	3.78	3.35	1.994	3.89	3.9	0.00
4-E	3.98	3.53	1.918	3.17	3.2	0.00
5-ESE	5.63	5.01	1.806	2.79	2.8	0.00
6-SE	7.75	6.94	1.598	3.76	3.8	0.00
7-SSE	8.19	7.26	1.945	4.60	4.6	0.00
8-S	6.38	5.67	2.667	7.08	7.1	0.00
9-SSW	5.94	5.26	2.391	12.86	12.9	0.00
10-SW	5.49	4.86	2.341	10.35	10.3	0.00
11-WSW	6.97	6.18	1.997	9.73	9.7	0.00
12-W	8.48	7.51	2.153	7.79	7.8	0.00
13-WNW	7.19	6.38	1.888	4.52	4.5	0.00
14-NW	7.41	6.57	2.012	4.63	4.6	0.00
15-NNW	7.39	6.55	2.043	5.15	5.1	0.00
mean	6.32	5.61	1.864	100.00	100.0	0.00

Frequency



— Total A: 6.3 m/s k 1.86 Vm: 5.6 m/s	— N A: 6.1 m/s k 1.82 Vm: 5.5 m/s	— NNE A: 5.3 m/s k 2.03 Vm: 4.7 m/s	— NE A: 4.6 m/s k 2.10 Vm: 4.1 m/s
— ENE A: 3.8 m/s k 1.99 Vm: 3.4 m/s	— E A: 4.0 m/s k 1.92 Vm: 3.5 m/s	— ESE A: 5.6 m/s k 1.81 Vm: 5.0 m/s	— SE A: 7.7 m/s k 1.60 Vm: 6.9 m/s
— SSE A: 8.2 m/s k 1.95 Vm: 7.3 m/s	— S A: 6.4 m/s k 2.67 Vm: 5.7 m/s	— SSW A: 5.9 m/s k 2.39 Vm: 5.3 m/s	— SW A: 5.5 m/s k 2.34 Vm: 4.9 m/s
— WSW A: 7.0 m/s k 2.00 Vm: 6.2 m/s	— WA: 8.5 m/s k 2.15 Vm: 7.5 m/s	— WNW A: 7.2 m/s k 1.89 Vm: 6.4 m/s	— NW A: 7.4 m/s k 2.01 Vm: 6.6 m/s
— NNW A: 7.4 m/s k 2.04 Vm: 6.5 m/s			