

Project:
Hualapai Tribal Nation

Description:
 Data from file(s)
 Y:\shared\Anemometer_Loan_Programs\WPA.NA.Loans\Hualapai - AZ\Wind Data\Hualapai 040325.N04
 Y:\shared\Anemometer_Loan_Programs\WPA.NA.Loans\Hualapai - AZ\Wind Data\Hualapai 040426.N04
 Y:\shared\Anemometer_Loan_Programs\WPA.NA.Loans\Hualapai - AZ\Wind Data\Hualapai 040618.N04
 Y:\shared\Anemometer_Loan_Programs\WPA.NA.Loans\Hualapai - AZ\Wind Data\Hualapai 040720.N04
 Y:\shared\Anemometer_Loan_Programs\WPA.NA.Loans\Hualapai - AZ\Wind Data\Hualapai 041005.N04
 Y:\shared\Anemometer_Loan_Programs\WPA.NA.Loans\Hualapai - AZ\Wind Data\Hualapai 050103.N05

Printed/Page
 05/13/05 11:18 AM / 1

Licensed user:
National Renewable Energy Laboratory
 1617 Cole Blvd. (MS3811)
 US-GOLDEN, CO 80401
 +1 303-384-7027

Calculated:
 05/13/05 11:18 AM/

Meteo data report, height: 66.0 m

Name of meteo object: Hualapai - Peach Springs

Data from: 03/25/04 2:50 PM Data to: 03/24/05 11:20 AM Observations: 52393 Observations per day: 144 Recovery rate: 100%

day	03/04	04/04	05/04	06/04	07/04	08/04	09/04	10/04	11/04	12/04	01/05	02/05	03/05
1	144	144	144	144	144	144	144	144	144	144	144	144	144
2		144	144	144	144	144	144	144	144	144	144	144	144
3		144	144	144	144	144	144	144	144	144	144	144	144
4		144	144	144	144	144	144	144	144	144	144	144	144
5		144	144	144	144	144	144	144	144	144	144	144	144
6		144	144	144	144	144	144	144	144	144	144	144	144
7		144	144	144	144	144	144	144	144	144	144	144	144
8		144	144	144	144	144	144	144	144	144	144	144	144
9		144	144	144	144	144	144	144	144	144	144	144	144
10		144	144	144	144	144	144	144	144	144	144	144	144
11		144	144	144	144	144	144	144	144	144	144	144	144
12		144	144	144	144	144	144	144	144	144	144	144	144
13		144	144	144	144	144	144	144	144	144	144	144	144
14		144	144	144	144	144	144	144	144	144	144	144	144
15		144	144	144	144	144	144	144	144	144	144	144	144
16		144	144	144	144	144	144	144	144	144	144	144	144
17		144	144	144	144	144	144	144	144	144	144	144	144
18		144	144	(142)	144	144	144	144	144	144	144	144	144
19		144	144	144	144	144	144	144	144	144	144	144	144
20		144	144	144	(143)	144	144	144	144	144	144	144	144
21		144	144	144	144	144	144	144	(67)	144	144	144	144
22		144	144	144	144	144	144	(130)	(95)	144	144	144	144
23		144	144	144	144	144	144	144	144	144	144	144	144
24		144	144	144	144	144	144	144	144	144	144	144	(69)
25	(55)	144	144	144	144	144	144	144	144	144	144	144	
26	144	144	144	144	144	144	144	144	144	144	144	144	144
27	144	144	144	144	144	144	144	144	144	144	144	144	
28	144	144	144	144	144	144	144	144	144	144	144	144	
29	144	144	144	144	144	144	144	144	144	144	144	144	
30	144	144	144	144	144	144	144	144	144	144	144	144	
31	144		144		144	144		144		144	144		
%	100	100	100	(100)	(100)	100	100	(100)	(97)	100	100	100	(100)

Project:
Hualapai Tribal Nation

Description:
Data from file(s)
Y:\shared\Anemometer_Loan_Programs\WPA.NA.Loans\Hualapai - AZ\Wind Data\Hualapai 040325.N04
Y:\shared\Anemometer_Loan_Programs\WPA.NA.Loans\Hualapai - AZ\Wind Data\Hualapai 040426.N04
Y:\shared\Anemometer_Loan_Programs\WPA.NA.Loans\Hualapai - AZ\Wind Data\Hualapai 040618.N04
Y:\shared\Anemometer_Loan_Programs\WPA.NA.Loans\Hualapai - AZ\Wind Data\Hualapai 040720.N04
Y:\shared\Anemometer_Loan_Programs\WPA.NA.Loans\Hualapai - AZ\Wind Data\Hualapai 041005.N04
Y:\shared\Anemometer_Loan_Programs\WPA.NA.Loans\Hualapai - AZ\Wind Data\Hualapai 050103.N05

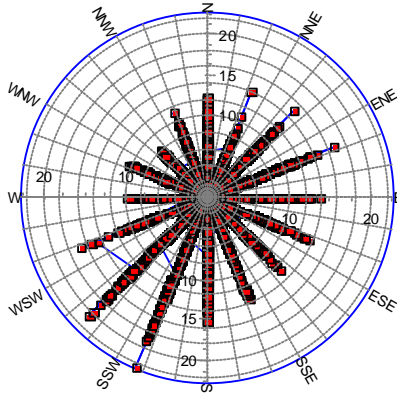
Printed/Page
05/13/05 11:18 AM / 2

Licensed user:
National Renewable Energy Laboratory
1617 Cole Blvd. (MS3811)
US-GOLDEN, CO 80401
+1 303-384-7027

Calculated:
05/13/05 11:18 AM/

Meteo data report, height: 66.0 m

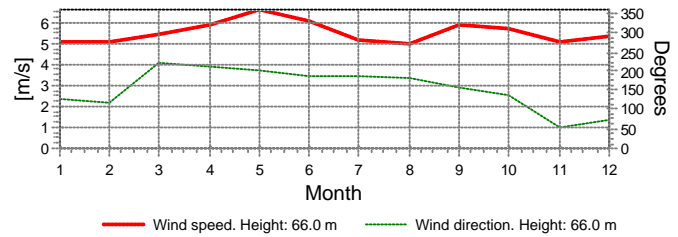
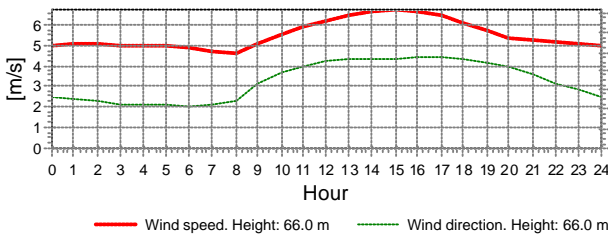
Name of meteo object: Hualapai - Peach Springs



Wind speed [m/s]

Monthly mean values of wind speed in m/s

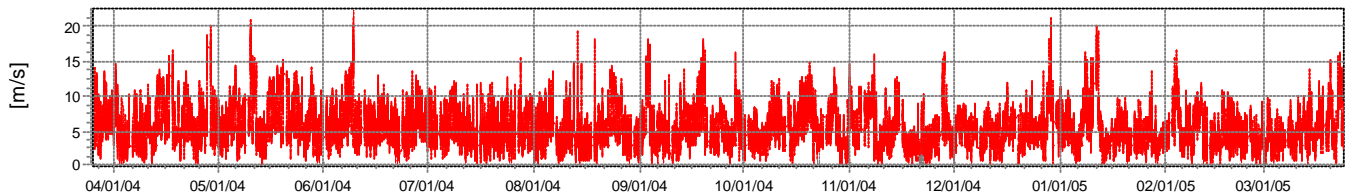
Month	2004	2005	mean	mean of months
Jan		5.1	5.1	5.1
Feb		5.1	5.1	5.1
Mar	6.9	5.1	5.5	6.0
Apr	6.0		6.0	6.0
May	6.6		6.6	6.6
Jun	6.1		6.1	6.1
Jul	5.2		5.2	5.2
Aug	5.0		5.0	5.0
Sep	5.9		5.9	5.9
Oct	5.7		5.7	5.7
Nov	5.1		5.1	5.1
Dec	5.4		5.4	5.4
mean, all data	5.7	5.1	5.6	
mean of months	5.8	5.1		5.6



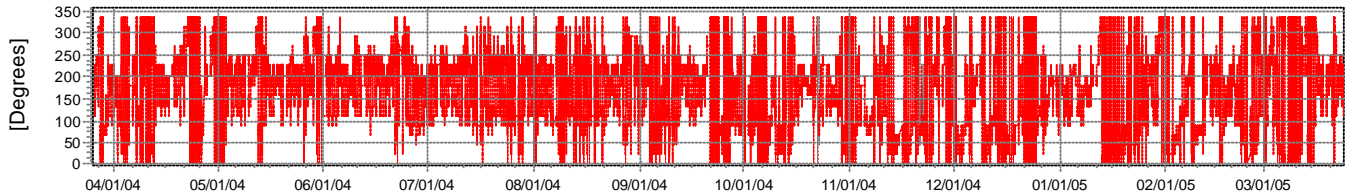
— Wind speed. Height: 66.0 m — Wind direction. Height: 66.0 m

— Wind speed. Height: 66.0 m — Wind direction. Height: 66.0 m

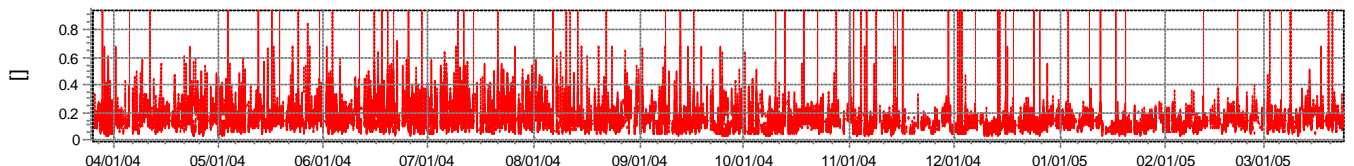
Wind speed



Wind direction



**Turbulence intensity
V>4.0 m/s**



Project:
Hualapai Tribal Nation

Description:
Data from file(s)
Y:\shared\Anemometer_Loan_Programs\WPA.NA.Loans\Hualapai - AZ\Wind Data\Hualapai 040325.N04
Y:\shared\Anemometer_Loan_Programs\WPA.NA.Loans\Hualapai - AZ\Wind Data\Hualapai 040426.N04
Y:\shared\Anemometer_Loan_Programs\WPA.NA.Loans\Hualapai - AZ\Wind Data\Hualapai 040618.N04
Y:\shared\Anemometer_Loan_Programs\WPA.NA.Loans\Hualapai - AZ\Wind Data\Hualapai 040720.N04
Y:\shared\Anemometer_Loan_Programs\WPA.NA.Loans\Hualapai - AZ\Wind Data\Hualapai 041005.N04
Y:\shared\Anemometer_Loan_Programs\WPA.NA.Loans\Hualapai - AZ\Wind Data\Hualapai 050103.N05

Printed/Page
05/13/05 11:18 AM / 3

Licensed user:
National Renewable Energy Laboratory
1617 Cole Blvd. (MS3811)
US-GOLDEN, CO 80401
+1 303-384-7027

Calculated:
05/13/05 11:18 AM/

Meteo data report, height: 66.0 m

Name of meteo object: Hualapai - Peach Springs

Frequency

Wind speed	Sum	N	NNE	NE	ENE	E	ESE	SE	SSE	S	SSW	SW	WSW	W	WNW	NW	NNW
0.00 - 0.49	305	11	9	8	17	13	14	10	16	10	13	31	8	11	74	34	26
0.50 - 1.49	1,631	107	91	67	124	75	136	133	94	88	92	157	106	70	84	112	95
1.50 - 2.49	3,570	234	193	119	128	244	319	259	214	148	184	350	335	189	187	253	214
2.50 - 3.49	6,774	435	312	220	234	504	827	633	487	276	340	594	378	302	398	403	431
3.50 - 4.49	8,411	484	397	232	265	757	1,473	869	590	472	518	842	272	183	315	284	458
4.50 - 5.49	8,512	497	388	308	277	687	1,413	806	618	613	660	1,065	279	124	224	183	370
5.50 - 6.49	6,900	299	267	285	412	733	619	426	431	665	726	1,145	285	115	187	104	201
6.50 - 7.49	4,941	171	117	218	480	549	250	206	219	483	641	955	295	57	115	55	130
7.50 - 8.49	3,640	100	37	159	343	417	163	104	159	353	536	819	225	47	78	22	78
8.50 - 9.49	2,808	51	10	75	305	289	106	59	121	297	516	715	157	31	35	3	38
9.50 - 10.49	1,847	36	6	41	164	170	66	30	91	214	508	418	62	14	14	1	12
10.50 - 11.49	1,200	17	4	31	98	54	29	21	47	162	387	291	41	6	4	0	8
11.50 - 12.49	635	6	2	14	43	18	13	7	39	77	244	158	13	0	1	0	0
12.50 - 13.49	448	1	0	4	23	5	10	4	20	53	201	114	13	0	0	0	0
13.50 - 14.49	244	1	1	2	16	3	2	1	3	28	107	75	5	0	0	0	0
14.50 - 15.49	145	2	0	4	8	0	0	0	3	10	70	44	4	0	0	0	0
15.50 - 16.49	89	0	0	0	0	0	0	1	1	5	53	27	2	0	0	0	0
16.50 - 17.49	77	0	0	0	1	0	0	0	0	0	42	32	2	0	0	0	0
17.50 - 18.49	39	0	0	0	0	0	0	0	0	0	21	18	0	0	0	0	0
18.50 - 19.49	21	0	0	0	0	0	0	0	0	0	10	11	0	0	0	0	0
19.50 - 20.49	11	0	0	0	0	0	0	0	0	0	5	6	0	0	0	0	0
20.50 - 21.49	4	0	0	0	0	0	0	0	0	0	3	1	0	0	0	0	0
21.50 - 22.49	0	0	0	0	0	0	0	0	0	0	0	0	0	0	0	0	0
22.50 - 23.49	1	0	0	0	0	0	0	0	0	0	1	0	0	0	0	0	0
Sum	52,253	2,452	1,834	1,787	2,938	4,518	5,440	3,569	3,153	3,954	5,878	7,868	2,482	1,149	1,716	1,454	2,061

Turbulence

Wind speed	Sum	N	NNE	NE	ENE	E	ESE	SE	SSE	S	SSW	SW	WSW	W	WNW	NW	NNW
0.00 - 0.49	0.000	0.000	0.000	0.000	0.000	0.000	0.000	0.000	0.000	0.000	0.000	0.000	0.000	0.000	0.000	0.000	0.000
0.50 - 1.49	0.000	0.000	0.000	0.000	0.000	0.000	0.000	0.000	0.000	0.000	0.000	0.000	0.000	0.000	0.000	0.000	0.000
1.50 - 2.49	0.000	0.000	0.000	0.000	0.000	0.000	0.000	0.000	0.000	0.000	0.000	0.000	0.000	0.000	0.000	0.000	0.000
2.50 - 3.49	0.000	0.000	0.000	0.000	0.000	0.000	0.000	0.000	0.000	0.000	0.000	0.000	0.000	0.000	0.000	0.000	0.000
3.50 - 4.49	0.146	0.137	0.098	0.121	0.137	0.114	0.106	0.115	0.130	0.169	0.192	0.183	0.271	0.220	0.183	0.211	0.188
4.50 - 5.49	0.140	0.145	0.098	0.102	0.124	0.097	0.098	0.113	0.125	0.153	0.167	0.179	0.261	0.217	0.193	0.215	0.187
5.50 - 6.49	0.150	0.163	0.099	0.113	0.122	0.087	0.096	0.132	0.142	0.156	0.169	0.179	0.252	0.212	0.215	0.235	0.209
6.50 - 7.49	0.148	0.155	0.106	0.094	0.098	0.078	0.109	0.136	0.162	0.164	0.170	0.180	0.204	0.200	0.199	0.201	0.181
7.50 - 8.49	0.150	0.163	0.146	0.110	0.092	0.073	0.120	0.135	0.163	0.171	0.177	0.173	0.188	0.197	0.194	0.206	0.194
8.50 - 9.49	0.152	0.174	0.158	0.140	0.100	0.084	0.118	0.142	0.167	0.176	0.176	0.170	0.159	0.183	0.199	0.200	0.188
9.50 - 10.49	0.149	0.164	0.137	0.145	0.100	0.085	0.119	0.155	0.159	0.169	0.168	0.158	0.157	0.179	0.186	0.222	0.184
10.50 - 11.49	0.151	0.185	0.182	0.128	0.113	0.091	0.105	0.166	0.152	0.161	0.164	0.151	0.159	0.187	0.182		0.176
11.50 - 12.49	0.148	0.153	0.113	0.121	0.115	0.107	0.126	0.143	0.147	0.157	0.161	0.143	0.135		0.140		
12.50 - 13.49	0.150	0.137		0.127	0.134	0.173	0.124	0.153	0.171	0.147	0.157	0.140	0.145				
13.50 - 14.49	0.143	0.159	0.163	0.130	0.125	0.104	0.137	0.131	0.244	0.151	0.154	0.128	0.123				
14.50 - 15.49	0.147	0.167		0.147	0.120				0.172	0.151	0.158	0.135	0.119				
15.50 - 16.49	0.143							0.144	0.128	0.138	0.155	0.122	0.108				
16.50 - 17.49	0.145				0.122						0.158	0.129	0.129				
17.50 - 18.49	0.137										0.148	0.124					
18.50 - 19.49	0.131										0.155	0.109					
19.50 - 20.49	0.142										0.161	0.125					
20.50 - 21.49	0.123										0.123	0.122					
21.50 - 22.49																	
22.50 - 23.49	0.144										0.144						
Sum	0.147	0.152	0.102	0.110	0.109	0.089	0.102	0.123	0.142	0.162	0.170	0.172	0.218	0.208	0.197	0.216	0.191

Project:
Hualapai Tribal Nation

Description:
Data from file(s)
Y:\shared\Anemometer_Loan_Programs\WPA.NA.Loans\Hualapai - AZ\Wind Data\Hualapai 040325.N04
Y:\shared\Anemometer_Loan_Programs\WPA.NA.Loans\Hualapai - AZ\Wind Data\Hualapai 040426.N04
Y:\shared\Anemometer_Loan_Programs\WPA.NA.Loans\Hualapai - AZ\Wind Data\Hualapai 040618.N04
Y:\shared\Anemometer_Loan_Programs\WPA.NA.Loans\Hualapai - AZ\Wind Data\Hualapai 040720.N04
Y:\shared\Anemometer_Loan_Programs\WPA.NA.Loans\Hualapai - AZ\Wind Data\Hualapai 041005.N04
Y:\shared\Anemometer_Loan_Programs\WPA.NA.Loans\Hualapai - AZ\Wind Data\Hualapai 050103.N05

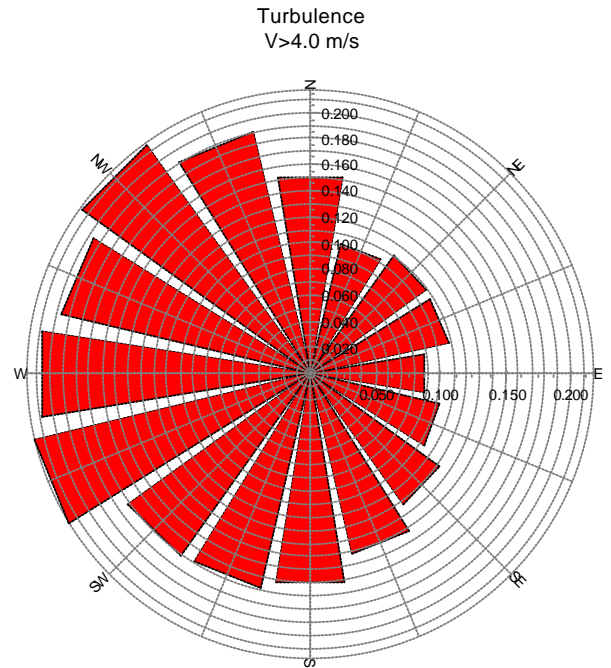
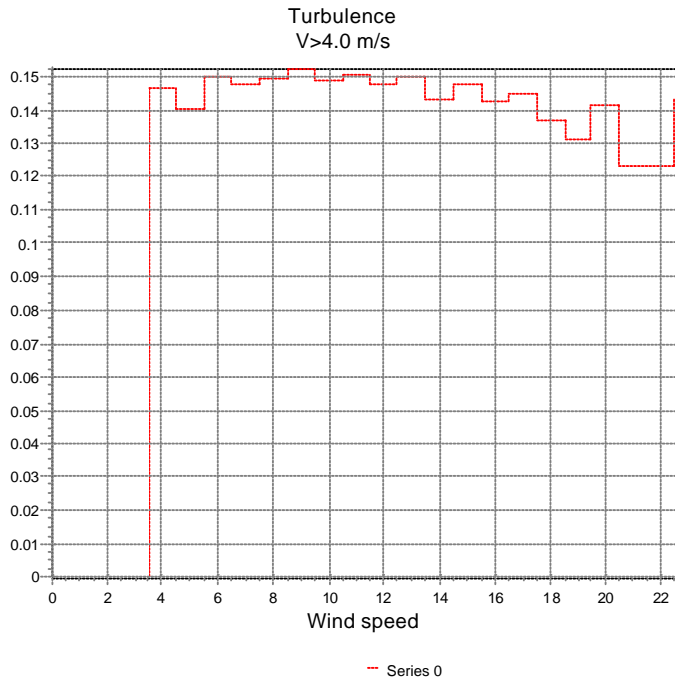
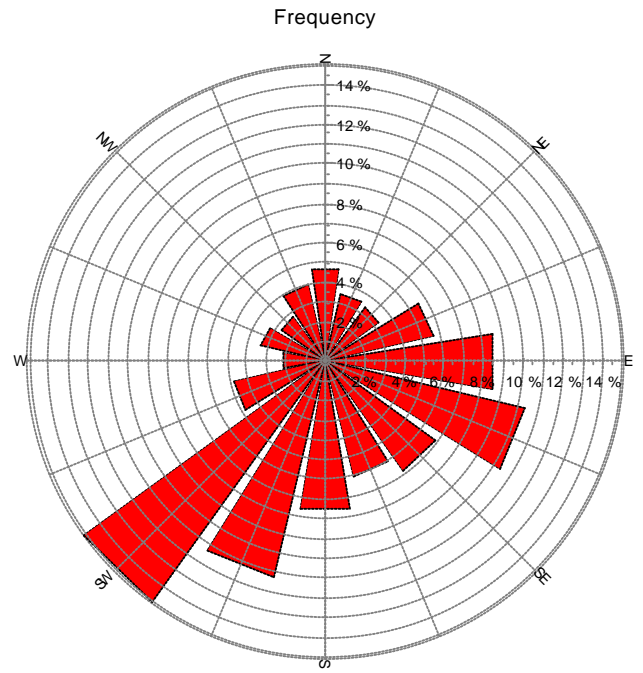
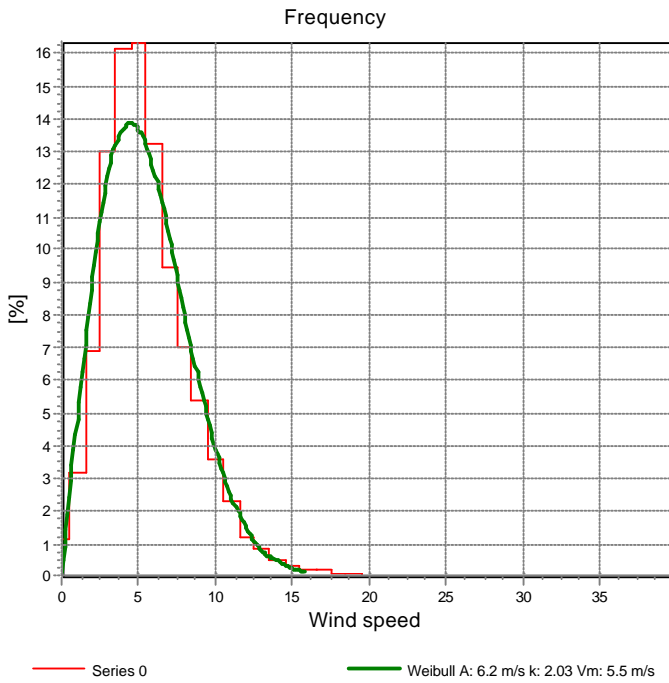
Printed/Page
05/13/05 11:18 AM / 4

Licensed user:
National Renewable Energy Laboratory
1617 Cole Blvd. (MS3811)
US-GOLDEN, CO 80401
+1 303-384-7027

Calculated:
05/13/05 11:18 AM/

Meteo data report, height: 66.0 m

Name of meteo object: Hualapai - Peach Springs



Project:
Hualapai Tribal Nation

Description:
Data from file(s)
Y:\shared\Anemometer_Loan_Programs\WPA.NA.Loans\Hualapai - AZ\Wind Data\Hualapai 040325.N04
Y:\shared\Anemometer_Loan_Programs\WPA.NA.Loans\Hualapai - AZ\Wind Data\Hualapai 040426.N04
Y:\shared\Anemometer_Loan_Programs\WPA.NA.Loans\Hualapai - AZ\Wind Data\Hualapai 040618.N04
Y:\shared\Anemometer_Loan_Programs\WPA.NA.Loans\Hualapai - AZ\Wind Data\Hualapai 040720.N04
Y:\shared\Anemometer_Loan_Programs\WPA.NA.Loans\Hualapai - AZ\Wind Data\Hualapai 041005.N04
Y:\shared\Anemometer_Loan_Programs\WPA.NA.Loans\Hualapai - AZ\Wind Data\Hualapai 050103.N05

Printed/Page
05/13/05 11:18 AM / 5

Licensed user:
National Renewable Energy Laboratory
1617 Cole Blvd. (MS3811)
US-GOLDEN, CO 80401
+1 303-384-7027

Calculated:
05/13/05 11:18 AM/

Meteo data report, height: 66.0 m

Name of meteo object: Hualapai - Peach Springs

Weibull Data

k-parameter correction: 0.0080/m

Sector	A- parameter [m/s]	Mean wind speed [m/s]	k- parameter	Frequency	Frequency [%]	Wind shear
0-N	5.17	4.58	2.280	4.69	4.7	0.00
1-NNE	4.91	4.37	2.755	3.51	3.5	0.00
2-NE	6.16	5.46	2.449	3.42	3.4	0.00
3-ENE	7.40	6.60	2.904	5.62	5.6	0.00
4-E	6.30	5.60	2.611	8.65	8.6	0.00
5-ESE	5.13	4.55	2.409	10.41	10.4	0.00
6-SE	5.05	4.48	2.406	6.83	6.8	0.00
7-SSE	5.63	4.99	1.984	6.03	6.0	0.00
8-S	7.03	6.23	2.253	7.57	7.6	0.00
9-SSW	8.43	7.47	2.207	11.25	11.2	0.00
10-SW	7.39	6.55	2.168	15.06	15.1	0.00
11-WSW	6.02	5.33	2.151	4.75	4.7	0.00
12-W	4.41	3.92	1.782	2.20	2.2	0.00
13-WNW	4.65	4.12	2.027	3.28	3.3	0.00
14-NW	3.93	3.48	2.132	2.78	2.8	0.00
15-NNW	4.78	4.23	2.257	3.94	3.9	0.00
mean	6.24	5.53	2.030	100.00	100.0	0.00

