

Project: **Navajo-Puerco Ridge**
 Description: Data from file(s)
 Y:\5000\shared\Anemometer_Loan_Programs\WPA.NA.Loans\Navajo - Puerco Ridge - AZ\Wind Data\Navajo PR 040707.csv
 Y:\5000\shared\Anemometer_Loan_Programs\WPA.NA.Loans\Navajo - Puerco Ridge - AZ\Wind Data\Navajo PR 040909.csv
 Y:\5000\shared\Anemometer_Loan_Programs\WPA.NA.Loans\Navajo - Puerco Ridge - AZ\Wind Data\Navajo PR 041202.csv
 Y:\5000\shared\Anemometer_Loan_Programs\WPA.NA.Loans\Navajo - Puerco Ridge - AZ\Wind Data\Navajo PR 050110.csv

Printed/Page
 12/18/2006 3:25 PM / 1
 Licensed user:
National Renewable Energy Laboratory
 1617 Cole Blvd. (MS3811)
 US-GOLDEN, CO 80401
 +1 303-384-7027
 Calculated:
 12/18/2006 3:24 PM/

Meteo data report, height: 21.0 m

Name of meteo object: Navajo - Puerco Ridge

Data from: 07/07/2004 3:30 PM Data to: 04/17/2005 6:40 AM Observations: 40844 Observations per day: 144 Recovery rate: 100%

day	07/04	08/04	09/04	10/04	11/04	12/04	01/05	02/05	03/05	04/05	05/05
1		144	144	(142)	144	144	144	144	144	(137)	
2		(136)	144	144	144	144	144	144	(143)	144	
3		144	144	144	(139)	144	144	(143)	(140)	(141)	
4		(143)	144	144	144	144	(138)	144	(138)	(142)	
5		144	144	144	144	144	144	144	144	144	
6		(143)	144	144	144	(142)	144	144	(139)	(141)	
7	(51)	(142)	144	(139)	(143)	(132)	144	144	(142)	(143)	
8	144	(143)	144	144	144	144	144	144	144	144	
9	144	144	144	(143)	144	144	144	144	144	144	144
10	144	144	144	144	(141)	(143)	(139)	144	(141)	144	
11	144	144	(132)	144	144	144	144	144	(141)	(143)	
12	144	144	144	144	(142)	(135)	(142)	(142)	144	(133)	
13	144	144	144	(143)	(89)	(139)	(138)	(135)	(142)	(134)	
14	144	144	144	144	144	144	(143)	(138)	(141)	(141)	
15	(143)	144	(140)	144	144	(112)	144	144	(142)	(139)	
16	144	(143)	144	144	144	(55)	(139)	144	144	(140)	
17	144	(143)	(143)	144	(143)	144	(136)	(142)	144	(41)	
18	(143)	(141)	144	144	144	144	(140)	144	(143)		
19	(140)	144	144	144	144	(141)	(142)	144	(143)		
20	144	(143)	144	144	144	144	(141)	144	144		
21	144	144	144	144	144	(143)	144	(143)	(143)		
22	144	144	144	144	(111)	(143)	(133)	(139)	144		
23	144	144	144	(143)	(73)	144	(137)	(143)	(143)		
24	144	144	144	144	144	144	144	144	144	144	
25	144	144	144	144	144	144	144	(142)	(133)		
26	144	144	144	144	144	(141)	(143)	(142)	(142)		
27	(143)	144	(142)	144	144	(143)	(143)	(132)	144		
28	(143)	144	144	(126)	144	144	144	144	(142)		
29	(142)	144	144	(86)	(121)	144	144		144		
30	144	144	144	144	(137)	144	144		(139)		
31	144	144		144		144	144		(142)		
%	(100)	(100)	(100)	(98)	(95)	(96)	(99)	(99)	(99)	(53)	(0)

Project:

Navajo-Puerco Ridge

Description:

Data from file(s)
 Y:\5000\shared\Anemometer_Loan_Programs\WPA.NA.Loans\Navajo - Puerco Ridge - AZ\Wind Data\Navajo PR 040707.csv
 Y:\5000\shared\Anemometer_Loan_Programs\WPA.NA.Loans\Navajo - Puerco Ridge - AZ\Wind Data\Navajo PR 040909.csv
 Y:\5000\shared\Anemometer_Loan_Programs\WPA.NA.Loans\Navajo - Puerco Ridge - AZ\Wind Data\Navajo PR 041202.csv
 Y:\5000\shared\Anemometer_Loan_Programs\WPA.NA.Loans\Navajo - Puerco Ridge - AZ\Wind Data\Navajo PR 050110.csv

Printed/Page

12/18/2006 3:25 PM / 2

Licensed user:

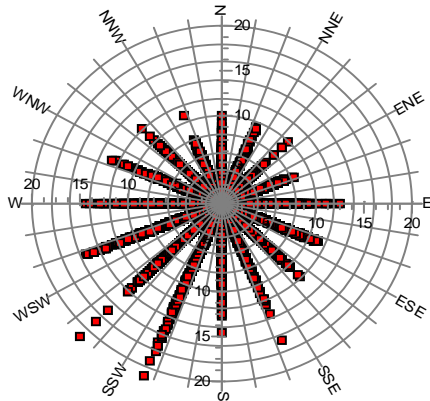
National Renewable Energy Laboratory
 1617 Cole Blvd. (MS3811)
 US-GOLDEN, CO 80401
 +1 303-384-7027

Calculated:

12/18/2006 3:24 PM/

Meteo data report, height: 21.0 m

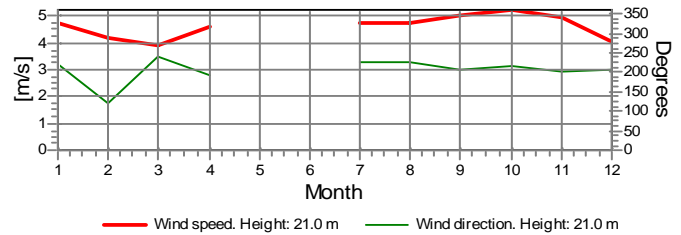
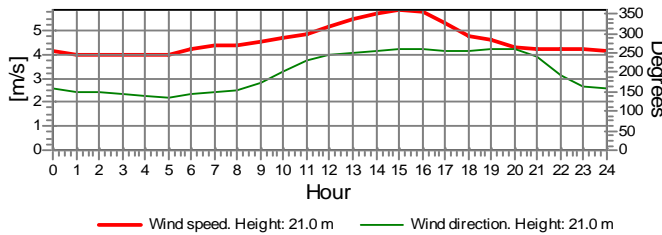
Name of meteo object: Navajo - Puerco Ridge



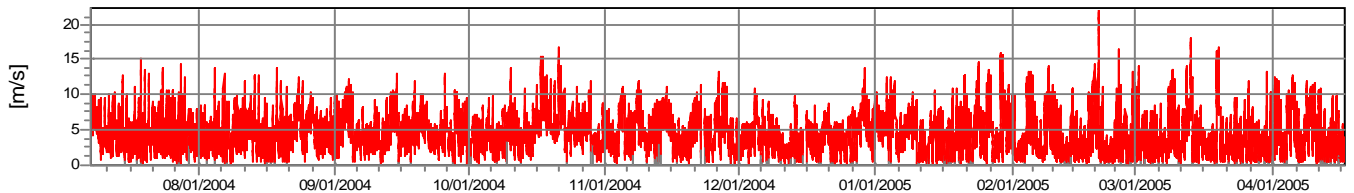
Wind speed [m/s]

Monthly mean values of wind speed in m/s

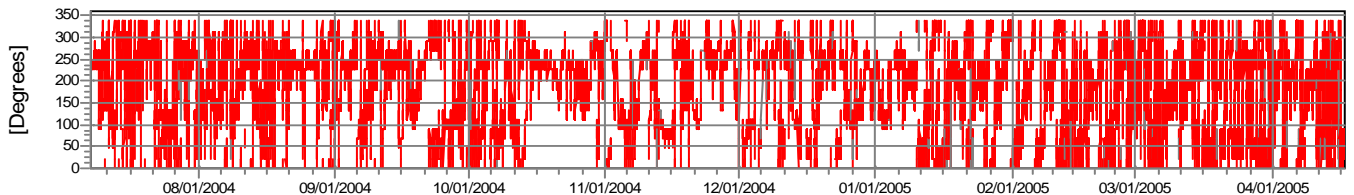
Month	2004	2005	mean	mean of months
Jan	4.7	4.7	4.7	4.7
Feb	4.2	4.2	4.2	4.2
Mar	3.9	3.9	3.9	3.9
Apr	4.6	4.6	4.6	4.6
May				
Jun				
Jul	4.8	4.8	4.8	4.8
Aug	4.7	4.7	4.7	4.7
Sep	5.0	5.0	5.0	5.0
Oct	5.2	5.2	5.2	5.2
Nov	5.0	5.0	5.0	5.0
Dec	4.1	4.1	4.1	4.1
mean, all data	4.8	4.3	4.6	
mean of months	4.8	4.3		4.6



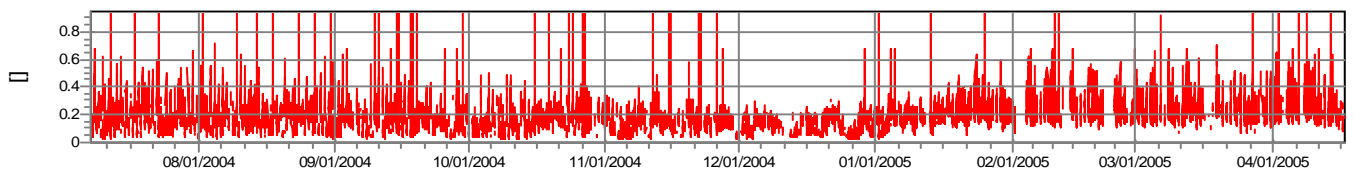
Wind speed



Wind direction



Turbulence intensity
V > 4.0 m/s



Project: Navajo-Puerco Ridge	Description: Data from file(s) Y:\5000\shared\Anemometer_Loan_Programs\WPA.NA.Loans\Navajo - Puerco Ridge - AZ\Wind Data\Navajo PR 040707.csv Y:\5000\shared\Anemometer_Loan_Programs\WPA.NA.Loans\Navajo - Puerco Ridge - AZ\Wind Data\Navajo PR 040909.csv Y:\5000\shared\Anemometer_Loan_Programs\WPA.NA.Loans\Navajo - Puerco Ridge - AZ\Wind Data\Navajo PR 041202.csv Y:\5000\shared\Anemometer_Loan_Programs\WPA.NA.Loans\Navajo - Puerco Ridge - AZ\Wind Data\Navajo PR 050110.csv	Printed/Page: 12/18/2006 3:25 PM / 3 Licensed user: National Renewable Energy Laboratory 1617 Cole Blvd. (MS3811) US-GOLDEN, CO 80401 +1 303-384-7027 Calculated: 12/18/2006 3:24 PM/
--	---	--

Meteo data report, height: 21.0 m

Name of meteo object: Navajo - Puerco Ridge

Frequency

Wind speed	Sum	N	NNE	NE	ENE	E	ESE	SE	SSE	S	SSW	SW	WSW	W	WNW	NW	NNW
m/s																	
0.00 - 0.49	418	38	51	76	50	23	11	14	10	16	11	21	27	17	20	17	16
0.50 - 1.49	3,799	214	353	624	722	175	109	122	144	128	157	199	242	223	133	113	141
1.50 - 2.49	5,109	270	313	398	527	240	234	280	296	258	276	429	530	421	224	210	203
2.50 - 3.49	6,014	316	306	271	402	266	426	421	346	306	295	503	736	670	281	214	255
3.50 - 4.49	5,974	189	224	203	309	274	585	405	316	363	390	496	819	739	365	148	149
4.50 - 5.49	5,244	113	121	124	218	269	659	355	257	317	346	491	810	631	341	98	94
5.50 - 6.49	4,677	76	70	37	147	276	672	312	196	249	327	529	794	512	258	126	96
6.50 - 7.49	3,362	47	49	9	65	248	528	234	88	131	222	441	628	339	166	111	56
7.50 - 8.49	2,279	18	17	6	16	154	391	128	44	83	158	342	497	226	120	53	26
8.50 - 9.49	1,414	6	17	4	5	52	238	33	29	56	172	229	344	134	64	25	6
9.50 - 10.49	792	1	5	2	1	14	80	16	18	24	143	143	210	89	31	12	3
10.50 - 11.49	499	0	0	1	3	14	45	10	12	16	128	73	134	39	20	2	2
11.50 - 12.49	255	0	0	0	0	4	4	4	12	12	81	51	55	20	10	2	0
12.50 - 13.49	140	0	0	0	0	1	1	2	4	8	55	22	30	8	8	1	0
13.50 - 14.49	70	0	0	0	0	2	0	0	0	2	33	11	18	3	1	0	0
14.50 - 15.49	44	0	0	0	0	0	0	0	0	3	28	4	8	1	0	0	0
15.50 - 16.49	14	0	0	0	0	0	0	0	0	1	13	0	0	0	0	0	0
16.50 - 17.49	13	0	0	0	0	0	0	0	1	0	10	2	0	0	0	0	0
17.50 - 18.49	6	0	0	0	0	0	0	0	0	0	5	1	0	0	0	0	0
18.50 - 19.49	6	0	0	0	0	0	0	0	0	0	3	3	0	0	0	0	0
19.50 - 20.49	2	0	0	0	0	0	0	0	0	0	1	1	0	0	0	0	0
20.50 - 21.49	5	0	0	0	0	0	0	0	0	0	3	2	0	0	0	0	0
21.50 - 22.49	2	0	0	0	0	0	0	0	0	0	2	0	0	0	0	0	0
Sum	40,138	1,288	1,526	1,755	2,465	2,012	3,983	2,336	1,773	1,973	2,859	3,993	5,882	4,072	2,042	1,132	1,047

Turbulence

Wind speed	Sum	N	NNE	NE	ENE	E	ESE	SE	SSE	S	SSW	SW	WSW	W	WNW	NW	NNW
0.00 - 0.49	0.000	0.000	0.000	0.000	0.000	0.000	0.000	0.000	0.000	0.000	0.000	0.000	0.000	0.000	0.000	0.000	0.000
0.50 - 1.49	0.000	0.000	0.000	0.000	0.000	0.000	0.000	0.000	0.000	0.000	0.000	0.000	0.000	0.000	0.000	0.000	0.000
1.50 - 2.49	0.000	0.000	0.000	0.000	0.000	0.000	0.000	0.000	0.000	0.000	0.000	0.000	0.000	0.000	0.000	0.000	0.000
2.50 - 3.49	0.000	0.000	0.000	0.000	0.000	0.000	0.000	0.000	0.000	0.000	0.000	0.000	0.000	0.000	0.000	0.000	0.000
3.50 - 4.49	0.204	0.220	0.174	0.180	0.171	0.138	0.173	0.158	0.149	0.253	0.262	0.233	0.203	0.218	0.233	0.274	0.241
4.50 - 5.49	0.189	0.233	0.184	0.167	0.146	0.109	0.136	0.131	0.158	0.259	0.267	0.226	0.190	0.203	0.199	0.243	0.257
5.50 - 6.49	0.184	0.239	0.190	0.185	0.160	0.106	0.108	0.123	0.146	0.258	0.278	0.229	0.181	0.206	0.200	0.240	0.253
6.50 - 7.49	0.173	0.212	0.190	0.183	0.171	0.094	0.094	0.110	0.171	0.296	0.279	0.214	0.170	0.193	0.190	0.214	0.230
7.50 - 8.49	0.173	0.204	0.179	0.212	0.201	0.095	0.096	0.130	0.191	0.289	0.281	0.204	0.172	0.184	0.190	0.216	0.239
8.50 - 9.49	0.189	0.204	0.183	0.249	0.212	0.113	0.105	0.164	0.176	0.309	0.272	0.218	0.184	0.185	0.190	0.196	0.205
9.50 - 10.49	0.192	0.210	0.193	0.212	0.190	0.134	0.121	0.151	0.182	0.276	0.257	0.205	0.176	0.165	0.182	0.190	0.251
10.50 - 11.49	0.196			0.186	0.187	0.144	0.104	0.166	0.192	0.308	0.258	0.205	0.172	0.166	0.161	0.187	0.192
11.50 - 12.49	0.201					0.149	0.133	0.177	0.193	0.238	0.245	0.202	0.165	0.152	0.148	0.206	
12.50 - 13.49	0.210					0.126	0.179	0.145	0.199	0.255	0.253	0.201	0.161	0.197	0.129	0.168	
13.50 - 14.49	0.200					0.158				0.208	0.228	0.196	0.167	0.150	0.112		
14.50 - 15.49	0.219									0.234	0.238	0.193	0.165	0.181			
15.50 - 16.49	0.203									0.199	0.203						
16.50 - 17.49	0.206							0.187			0.207	0.212					
17.50 - 18.49	0.196										0.194	0.206					
18.50 - 19.49	0.195										0.196	0.194					
19.50 - 20.49	0.216										0.232	0.200					
20.50 - 21.49	0.200										0.197	0.205					
21.50 - 22.49	0.183										0.183						
Sum	0.186	0.226	0.183	0.177	0.161	0.108	0.117	0.131	0.159	0.267	0.266	0.219	0.181	0.199	0.199	0.232	0.246

Project:

Navajo-Puerco Ridge

Description:

Data from file(s)
 Y:\5000\shared\Anemometer_Loan_Programs\WPA.NA.Loans\Navajo - Puerco Ridge - AZ\Wind Data\Navajo PR 040707.csv
 Y:\5000\shared\Anemometer_Loan_Programs\WPA.NA.Loans\Navajo - Puerco Ridge - AZ\Wind Data\Navajo PR 040909.csv
 Y:\5000\shared\Anemometer_Loan_Programs\WPA.NA.Loans\Navajo - Puerco Ridge - AZ\Wind Data\Navajo PR 041202.csv
 Y:\5000\shared\Anemometer_Loan_Programs\WPA.NA.Loans\Navajo - Puerco Ridge - AZ\Wind Data\Navajo PR 050110.csv

Printed/Page

12/18/2006 3:25 PM / 4

Licensed user:

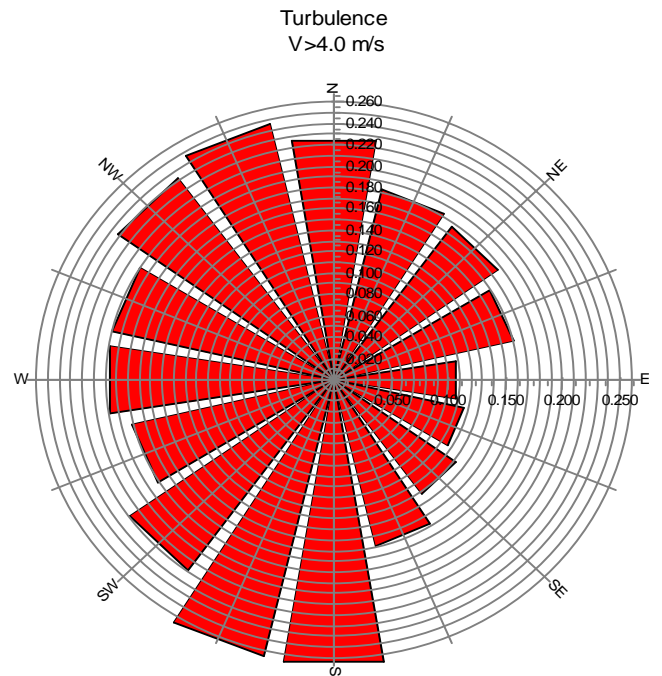
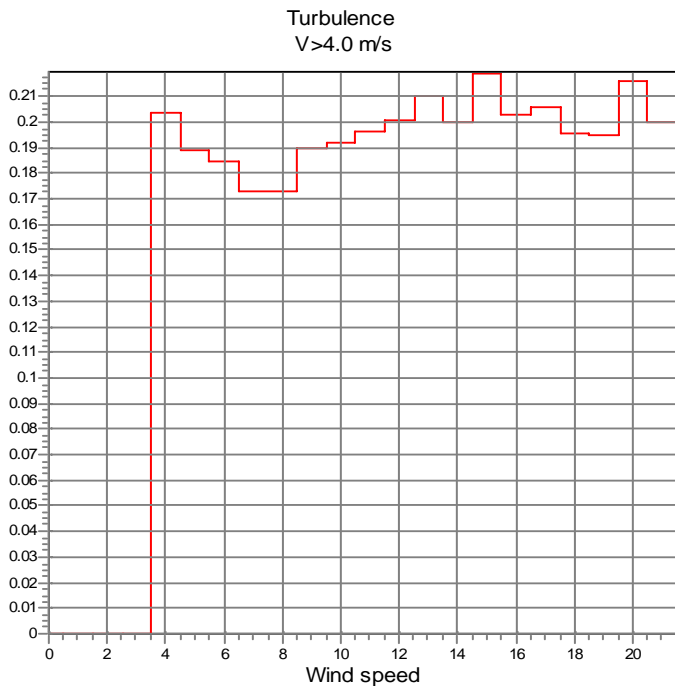
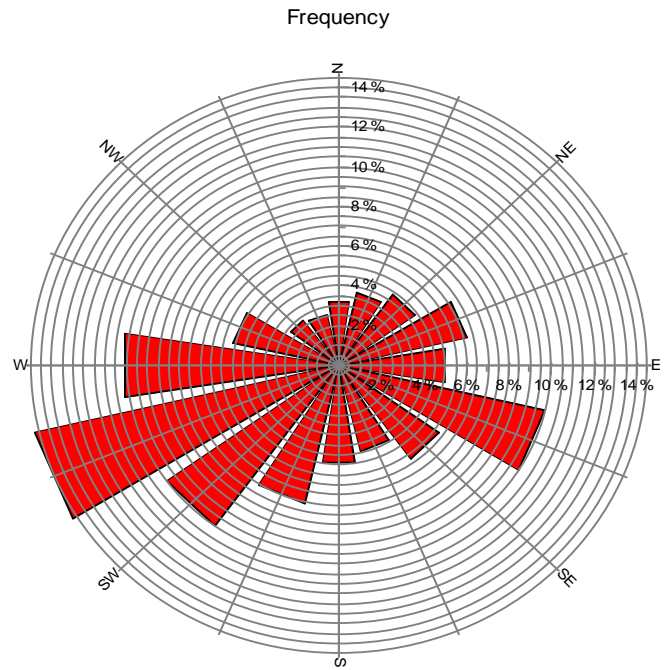
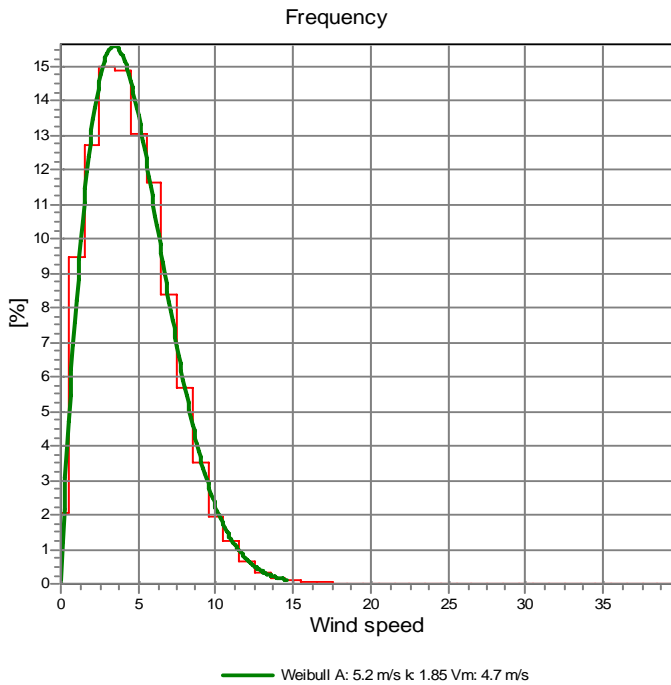
National Renewable Energy Laboratory
 1617 Cole Blvd. (MS3811)
 US-GOLDEN, CO 80401
 +1 303-384-7027

Calculated:

12/18/2006 3:24 PM/

Meteo data report, height: 21.0 m

Name of meteo object: Navajo - Puerco Ridge



Project:
Navajo-Puerco Ridge

Description:
Data from file(s)
Y:\5000\shared\Anemometer_Loan_Programs\WPA.NA.Loans\Navajo - Puerco Ridge - AZ\Wind Data\Navajo PR 040707.csv
Y:\5000\shared\Anemometer_Loan_Programs\WPA.NA.Loans\Navajo - Puerco Ridge - AZ\Wind Data\Navajo PR 040909.csv
Y:\5000\shared\Anemometer_Loan_Programs\WPA.NA.Loans\Navajo - Puerco Ridge - AZ\Wind Data\Navajo PR 041202.csv
Y:\5000\shared\Anemometer_Loan_Programs\WPA.NA.Loans\Navajo - Puerco Ridge - AZ\Wind Data\Navajo PR 050110.csv

Printed/Page
12/18/2006 3:25 PM / 5
Licensed user:
National Renewable Energy Laboratory
1617 Cole Blvd. (MS3811)
US-GOLDEN, CO 80401
+1 303-384-7027
Calculated:
12/18/2006 3:24 PM/

Meteo data report, height: 21.0 m

Name of meteo object: Navajo - Puerco Ridge

Weibull Data

k-parameter correction: 0.0080/m

Sector	A- parameter [m/s]	Mean wind speed [m/s]	k- parameter	Frequency	Frequency [%]	Wind shear
0-N	3.55	3.16	1.843	3.21	3.2	0.00
1-NNE	3.41	3.04	1.698	3.80	3.8	0.00
2-NE	2.67	2.39	1.591	4.37	4.4	0.00
3-ENE	3.18	2.84	1.658	6.14	6.1	0.00
4-E	5.41	4.80	2.336	5.01	5.0	0.00
5-ESE	6.21	5.54	2.825	9.92	9.9	0.00
6-SE	5.10	4.52	2.301	5.82	5.8	0.00
7-SSE	4.63	4.11	1.889	4.42	4.4	0.00
8-S	5.14	4.55	1.984	4.92	4.9	0.00
9-SSW	6.66	5.95	1.680	7.12	7.1	0.00
10-SW	6.24	5.52	2.145	9.95	9.9	0.00
11-WSW	6.20	5.49	2.211	14.65	14.7	0.00
12-W	5.34	4.73	2.075	10.14	10.1	0.00
13-WNW	5.35	4.74	2.129	5.09	5.1	0.00
14-NW	4.57	4.06	1.818	2.82	2.8	0.00
15-NNW	3.85	3.43	1.751	2.61	2.6	0.00
mean	5.24	4.66	1.851	100.00	100.0	0.00

