

Project:
Navajo-Black Mesa

Description:
Data from file(s)
Y:\shared\Anemometer_Loan_Programs\WPA.NA.Loans\Navajo - Black Mesa - AZ\Wind Data\Navajo-Black Mesa 040923.N04
Y:\shared\Anemometer_Loan_Programs\WPA.NA.Loans\Navajo - Black Mesa - AZ\Wind Data\Navajo-Black Mesa 040706.N04
Y:\shared\Anemometer_Loan_Programs\WPA.NA.Loans\Navajo - Black Mesa - AZ\Wind Data\Navajo-Black Mesa 040413.N04
Y:\shared\Anemometer_Loan_Programs\WPA.NA.Loans\Navajo - Black Mesa - AZ\Wind Data\Navajo-Black Mesa 050223.N05

Printed/Page
04/12/2005 3:54 PM / 1
Licensed user:
National Renewable Energy Laboratory
1617 Cole Blvd. (MS3811)
US-GOLDEN, CO 80401
+1 303-384-7027

Calculated:
04/12/2005 3:53 PM/

Meteo data report, height: 120.0 m

Name of meteo object: Navajo-Black Mesa

Data from: 04/13/2004 12:00 PM Data to: 03/25/2005 11:00 AM Observations: 35661 Observations per day: 144 Recovery rate: 72%

day	04/04	05/04	06/04	07/04	08/04	09/04	10/04	11/04	12/04	01/05	02/05	03/05	04/05
1		144	144	144	144	144	144	144	(0)	(0)	(0)		144
2		144	144	144	144	144	144	144	(0)	(0)	(0)		144
3		144	144	144	144	144	144	144	(0)	(0)	(0)		144
4		144	144	144	144	144	144	144	(0)	(0)	(0)		144
5		144	144	144	144	144	144	144	(0)	(0)	(0)		144
6		144	144	144	144	144	144	144	(0)	(0)	(0)		144
7		144	144	144	144	144	144	144	(0)	(0)	(0)		144
8		144	144	144	144	144	144	144	(0)	(0)	(0)		144
9		144	144	144	144	144	144	144	(0)	(0)	(0)		144
10		144	144	144	144	144	144	144	(0)	(0)	(0)		144
11		144	144	144	144	144	144	144	(0)	(0)	(0)		144
12		144	144	144	144	144	144	144	(0)	(0)	(0)		144
13	(72)	144	144	144	144	144	144	(58)	(0)	(0)	(0)		144
14	144	144	144	144	144	144	144	(0)	(0)	(0)	(0)		144
15	144	144	144	144	144	144	144	(75)	(0)	(0)	(0)		144
16	144	144	144	144	144	144	144	144	(0)	(0)	(0)		144
17	144	144	144	144	144	144	144	(68)	(0)	(0)	(0)		144
18	144	144	144	144	144	144	144	(0)	(0)	(0)	(0)		144
19	144	144	144	144	144	144	144	(0)	(0)	(0)	(0)		144
20	144	144	144	144	144	144	144	(143)	(0)	(0)	(0)		144
21	144	144	144	144	144	144	(121)	(0)	(0)	(0)	(0)		144
22	144	144	144	144	144	144	144	(0)	(0)	(0)	(0)		144
23	(102)	144	144	144	144	144	144	(0)	(0)	(0)	(30)		144
24	144	144	144	144	144	144	144	(0)	(0)	(0)	(127)		144
25	144	144	144	144	144	144	144	(0)	(0)	(0)	144	(67)	
26	144	144	144	144	144	144	144	(0)	(0)	(0)	144		
27	144	144	144	144	144	(123)	144	(0)	(0)	(0)	144		
28	144	144	144	144	144	144	144	(0)	(0)	(0)	144		
29	144	144	144	144	144	144	(128)	(0)	(0)	(0)			
30	144	144	144	144	144	144	144	(0)	(0)	(0)			
31		144		144	144		144		(0)	(0)			
%	(98)	100	100	100	100	(100)	(99)	(48)	(0)	(0)	(18)	(79)	(0)

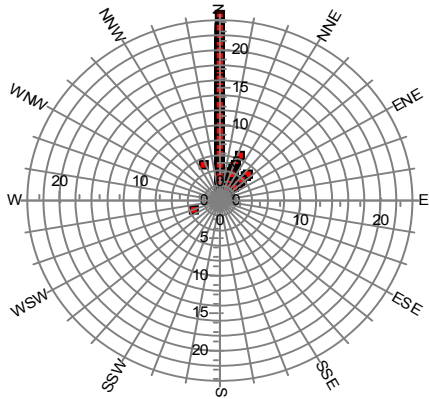
Project:
Navajo-Black Mesa

Description:
Data from file(s)
Y:\shared\Anemometer_Loan_Programs\WPA.NA.Loans\Navajo - Black Mesa - AZ\Wind Data\Navajo-Black Mesa 040923.N04
Y:\shared\Anemometer_Loan_Programs\WPA.NA.Loans\Navajo - Black Mesa - AZ\Wind Data\Navajo-Black Mesa 040706.N04
Y:\shared\Anemometer_Loan_Programs\WPA.NA.Loans\Navajo - Black Mesa - AZ\Wind Data\Navajo-Black Mesa 040413.N04
Y:\shared\Anemometer_Loan_Programs\WPA.NA.Loans\Navajo - Black Mesa - AZ\Wind Data\Navajo-Black Mesa 050223.N05

Printed/Page
04/12/2005 3:54 PM / 2
Licensed user:
National Renewable Energy Laboratory
1617 Cole Blvd. (MS3811)
US-GOLDEN, CO 80401
+1 303-384-7027
Calculated:
04/12/2005 3:53 PM/

Meteo data report, height: 120.0 m

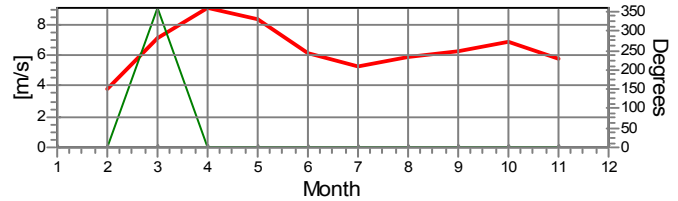
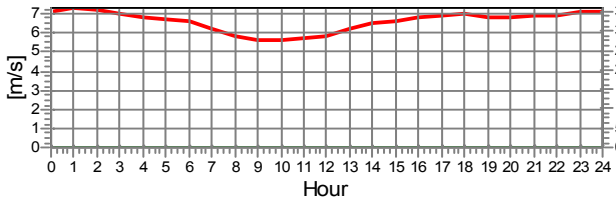
Name of meteo object: Navajo-Black Mesa



Monthly mean values of wind speed in m/s

Month	2004	2005	mean	mean of months
Jan				
Feb		3.8	3.8	3.8
Mar		7.1	7.1	7.1
Apr	9.1		9.1	9.1
May	8.4		8.4	8.4
Jun	6.1		6.1	6.1
Jul	5.3		5.3	5.3
Aug	5.9		5.9	5.9
Sep	6.2		6.2	6.2
Oct	6.9		6.9	6.9
Nov	5.8		5.8	5.8
Dec				
mean, all data	6.6	6.5	6.6	
mean of months	6.7	5.4		6.4

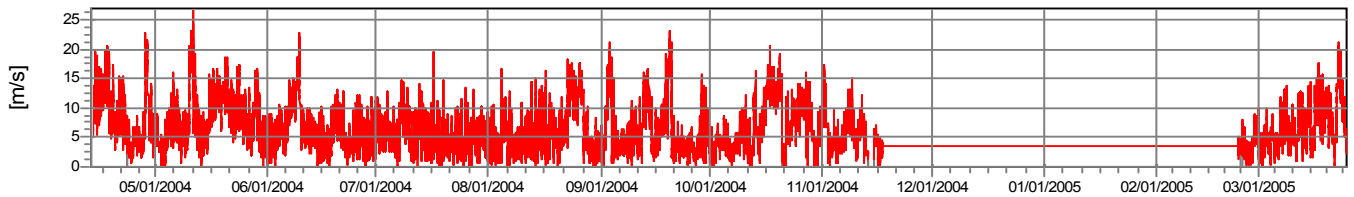
Wind speed [m/s]



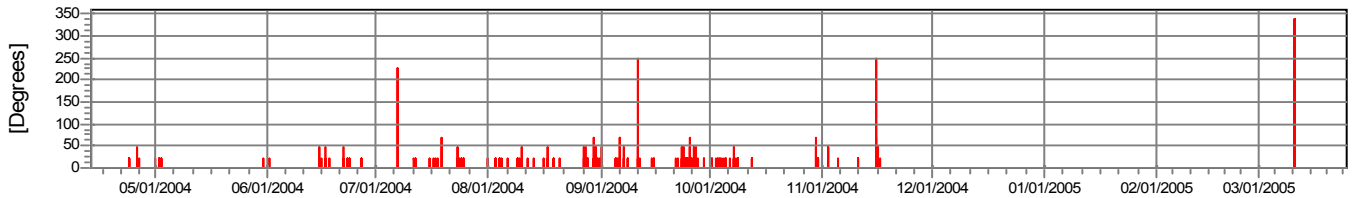
— Wind speed. Height: 120.0 m — Wind direction. Height: 120.0 m

— Wind speed. Height: 120.0 m — Wind direction. Height: 120.0 m

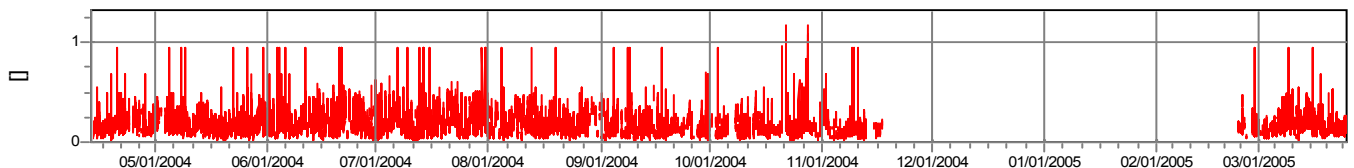
Wind speed



Wind direction



**Turbulence intensity
V > 4.0 m/s**



Project:
Navajo-Black Mesa

Description:
Data from file(s)
Y:\shared\Anemometer_Loan_Programs\WPA.NA.Loans\Navajo - Black Mesa - AZ\Wind Data\Navajo-Black Mesa 040923.N04
Y:\shared\Anemometer_Loan_Programs\WPA.NA.Loans\Navajo - Black Mesa - AZ\Wind Data\Navajo-Black Mesa 040706.N04
Y:\shared\Anemometer_Loan_Programs\WPA.NA.Loans\Navajo - Black Mesa - AZ\Wind Data\Navajo-Black Mesa 040413.N04
Y:\shared\Anemometer_Loan_Programs\WPA.NA.Loans\Navajo - Black Mesa - AZ\Wind Data\Navajo-Black Mesa 050223.N05

Printed/Page
04/12/2005 3:54 PM / 3
Licensed user:
National Renewable Energy Laboratory
1617 Cole Blvd. (MS3811)
US-GOLDEN, CO 80401
+1 303-384-7027
Calculated:
04/12/2005 3:53 PM/

Meteo data report, height: 120.0 m

Name of meteo object: Navajo-Black Mesa

Frequency

Wind speed m/s	Sum	N	NNE	NE	ENE	E	ESE	SE	SSE	S	SSW	SW	WSW	W	WNW	NW	NNW
0.00 - 0.49	193	193	0	0	0	0	0	0	0	0	0	0	0	0	0	0	0
0.50 - 1.49	1,063	1,034	21	6	2	0	0	0	0	0	0	0	0	0	0	0	0
1.50 - 2.49	2,378	2,324	43	8	2	0	0	0	0	0	0	1	0	0	0	0	0
2.50 - 3.49	4,607	4,507	92	6	2	0	0	0	0	0	0	0	0	0	0	0	0
3.50 - 4.49	4,908	4,814	78	10	2	0	0	0	0	0	0	0	3	0	0	0	1
4.50 - 5.49	4,016	3,984	27	4	0	0	0	0	0	0	0	0	0	0	0	0	1
5.50 - 6.49	3,411	3,408	2	0	0	0	0	0	0	0	0	0	0	0	0	0	1
6.50 - 7.49	2,777	2,774	1	0	0	0	0	0	0	0	0	0	0	0	0	0	2
7.50 - 8.49	2,258	2,257	1	0	0	0	0	0	0	0	0	0	0	0	0	0	0
8.50 - 9.49	1,938	1,938	0	0	0	0	0	0	0	0	0	0	0	0	0	0	0
9.50 - 10.49	1,533	1,533	0	0	0	0	0	0	0	0	0	0	0	0	0	0	0
10.50 - 11.49	1,498	1,498	0	0	0	0	0	0	0	0	0	0	0	0	0	0	0
11.50 - 12.49	1,235	1,235	0	0	0	0	0	0	0	0	0	0	0	0	0	0	0
12.50 - 13.49	937	937	0	0	0	0	0	0	0	0	0	0	0	0	0	0	0
13.50 - 14.49	768	768	0	0	0	0	0	0	0	0	0	0	0	0	0	0	0
14.50 - 15.49	527	527	0	0	0	0	0	0	0	0	0	0	0	0	0	0	0
15.50 - 16.49	351	351	0	0	0	0	0	0	0	0	0	0	0	0	0	0	0
16.50 - 17.49	303	303	0	0	0	0	0	0	0	0	0	0	0	0	0	0	0
17.50 - 18.49	198	198	0	0	0	0	0	0	0	0	0	0	0	0	0	0	0
18.50 - 19.49	154	154	0	0	0	0	0	0	0	0	0	0	0	0	0	0	0
19.50 - 20.49	96	96	0	0	0	0	0	0	0	0	0	0	0	0	0	0	0
20.50 - 21.49	56	56	0	0	0	0	0	0	0	0	0	0	0	0	0	0	0
21.50 - 22.49	24	24	0	0	0	0	0	0	0	0	0	0	0	0	0	0	0
22.50 - 23.49	9	9	0	0	0	0	0	0	0	0	0	0	0	0	0	0	0
23.50 - 24.49	0	0	0	0	0	0	0	0	0	0	0	0	0	0	0	0	0
24.50 - 25.49	2	2	0	0	0	0	0	0	0	0	0	0	0	0	0	0	0
25.50 - 26.49	1	1	0	0	0	0	0	0	0	0	0	0	0	0	0	0	0
26.50 - 27.49	1	1	0	0	0	0	0	0	0	0	0	0	0	0	0	0	0
Sum	35,242	34,926	265	34	8	0	0	0	0	0	0	1	3	0	0	0	5

Turbulence

Wind speed	Sum	N	NNE	NE	ENE	E	ESE	SE	SSE	S	SSW	SW	WSW	W	WNW	NW	NNW
0.00 - 0.49	0.000	0.000															
0.50 - 1.49	0.000	0.000	0.000	0.000	0.000												
1.50 - 2.49	0.000	0.000	0.000	0.000	0.000							0.000					
2.50 - 3.49	0.000	0.000	0.000	0.000	0.000												
3.50 - 4.49	0.204	0.205	0.143	0.104	0.000								0.000				0.000
4.50 - 5.49	0.195	0.196	0.143	0.112													0.070
5.50 - 6.49	0.188	0.188	0.129														0.096
6.50 - 7.49	0.169	0.169	0.194														0.132
7.50 - 8.49	0.158	0.158	0.122														
8.50 - 9.49	0.151	0.151															
9.50 - 10.49	0.143	0.143															
10.50 - 11.49	0.134	0.134															
11.50 - 12.49	0.128	0.128															
12.50 - 13.49	0.130	0.130															
13.50 - 14.49	0.118	0.118															
14.50 - 15.49	0.119	0.119															
15.50 - 16.49	0.120	0.120															
16.50 - 17.49	0.119	0.119															
17.50 - 18.49	0.121	0.121															
18.50 - 19.49	0.121	0.121															
19.50 - 20.49	0.115	0.115															
20.50 - 21.49	0.112	0.112															
21.50 - 22.49	0.097	0.097															
22.50 - 23.49	0.107	0.107															
23.50 - 24.49																	
24.50 - 25.49	0.114	0.114															
25.50 - 26.49	0.165	0.165															
26.50 - 27.49	0.132	0.132															
Sum	0.165	0.165	0.143	0.108	0.000							0.000	0.000				0.107

Project:
Navajo-Black Mesa

Description:
Data from file(s)
Y:\shared\Anemometer_Loan_Programs\WPA.NA.Loans\Navajo - Black Mesa - AZ\Wind Data\Navajo-Black Mesa 040923.N04
Y:\shared\Anemometer_Loan_Programs\WPA.NA.Loans\Navajo - Black Mesa - AZ\Wind Data\Navajo-Black Mesa 040706.N04
Y:\shared\Anemometer_Loan_Programs\WPA.NA.Loans\Navajo - Black Mesa - AZ\Wind Data\Navajo-Black Mesa 040413.N04
Y:\shared\Anemometer_Loan_Programs\WPA.NA.Loans\Navajo - Black Mesa - AZ\Wind Data\Navajo-Black Mesa 050223.N05

Printed/Page
04/12/2005 3:54 PM / 4
Licensed user:
National Renewable Energy Laboratory
1617 Cole Blvd. (MS3811)
US-GOLDEN, CO 80401
+1 303-384-7027
Calculated:
04/12/2005 3:53 PM/

Meteo data report, height: 120.0 m

Name of meteo object: Navajo-Black Mesa

