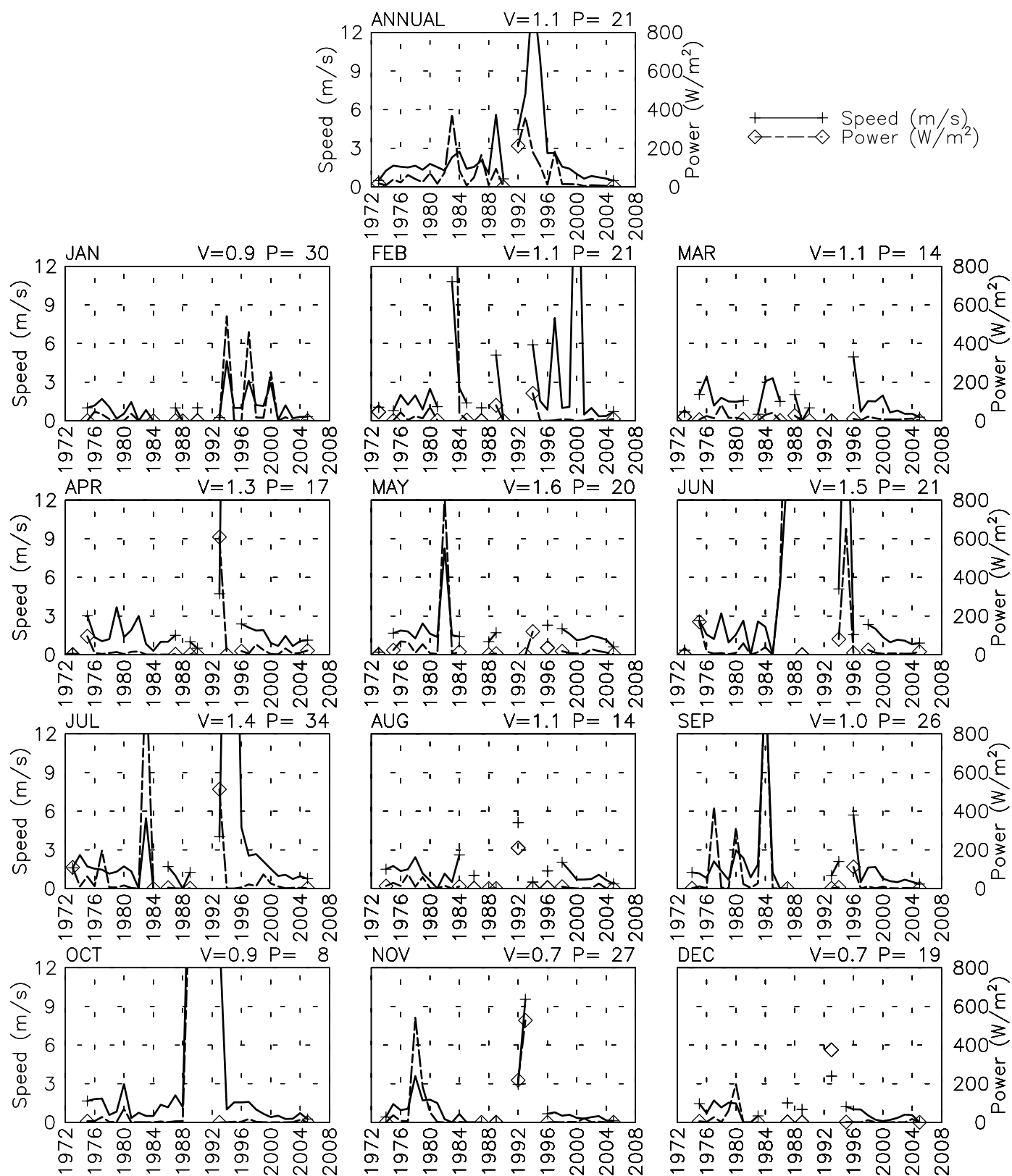


# SPEED AND POWER BY YEAR

SIBI - 416970

29° 33' N 67° 53' E - Elev 134m \*LST=GMT +5 hours NT= +5  
02/73-04/90 08/92-12/05

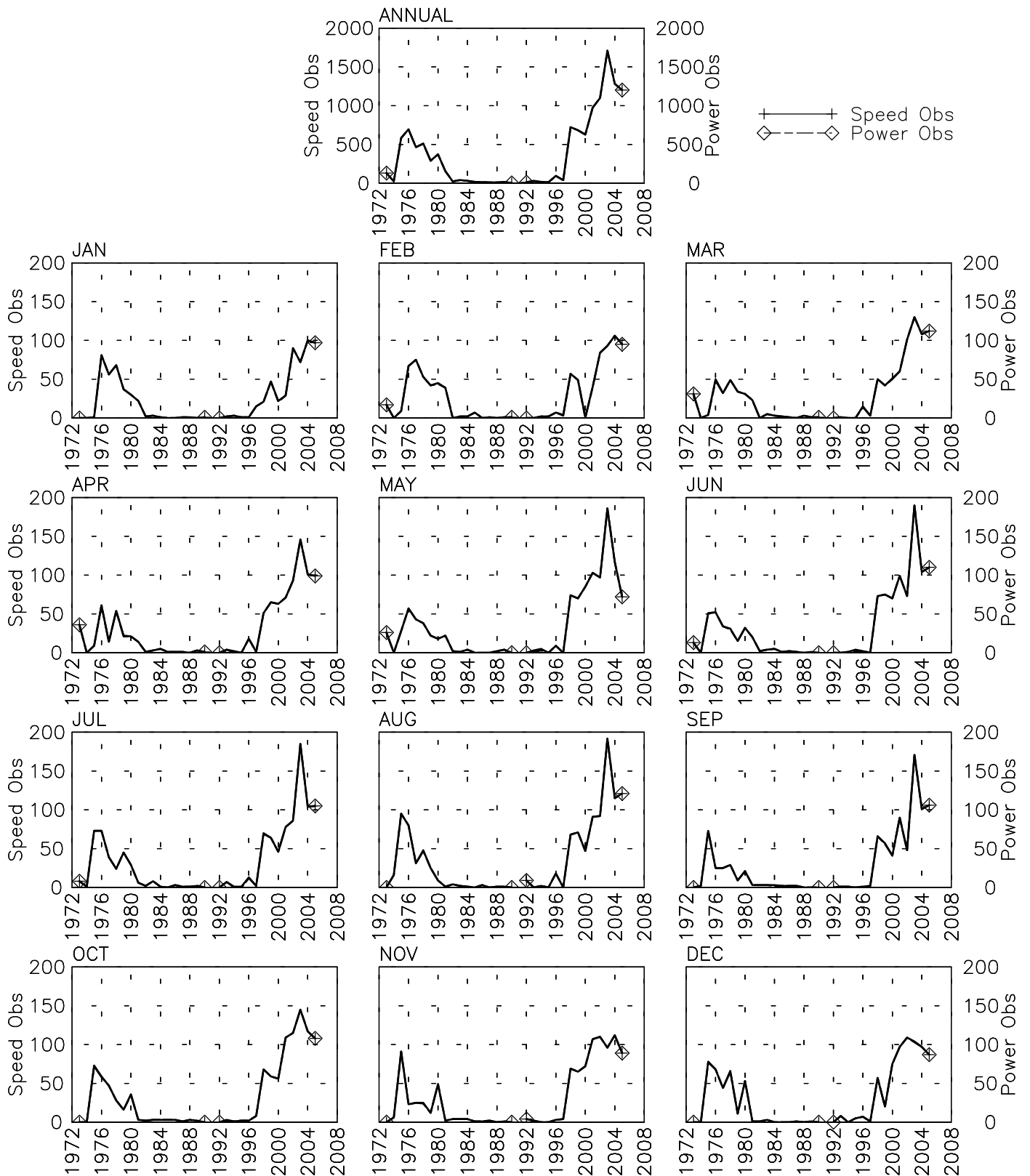


Fri Aug 25 13:43:08 2006

# OBSERVATIONS BY YEAR

SIBI - 416970

29° 33' N 67° 53' E - Elev 134m \*LST=GMT +5 hours NT= +5  
02/73-04/90 08/92-12/05

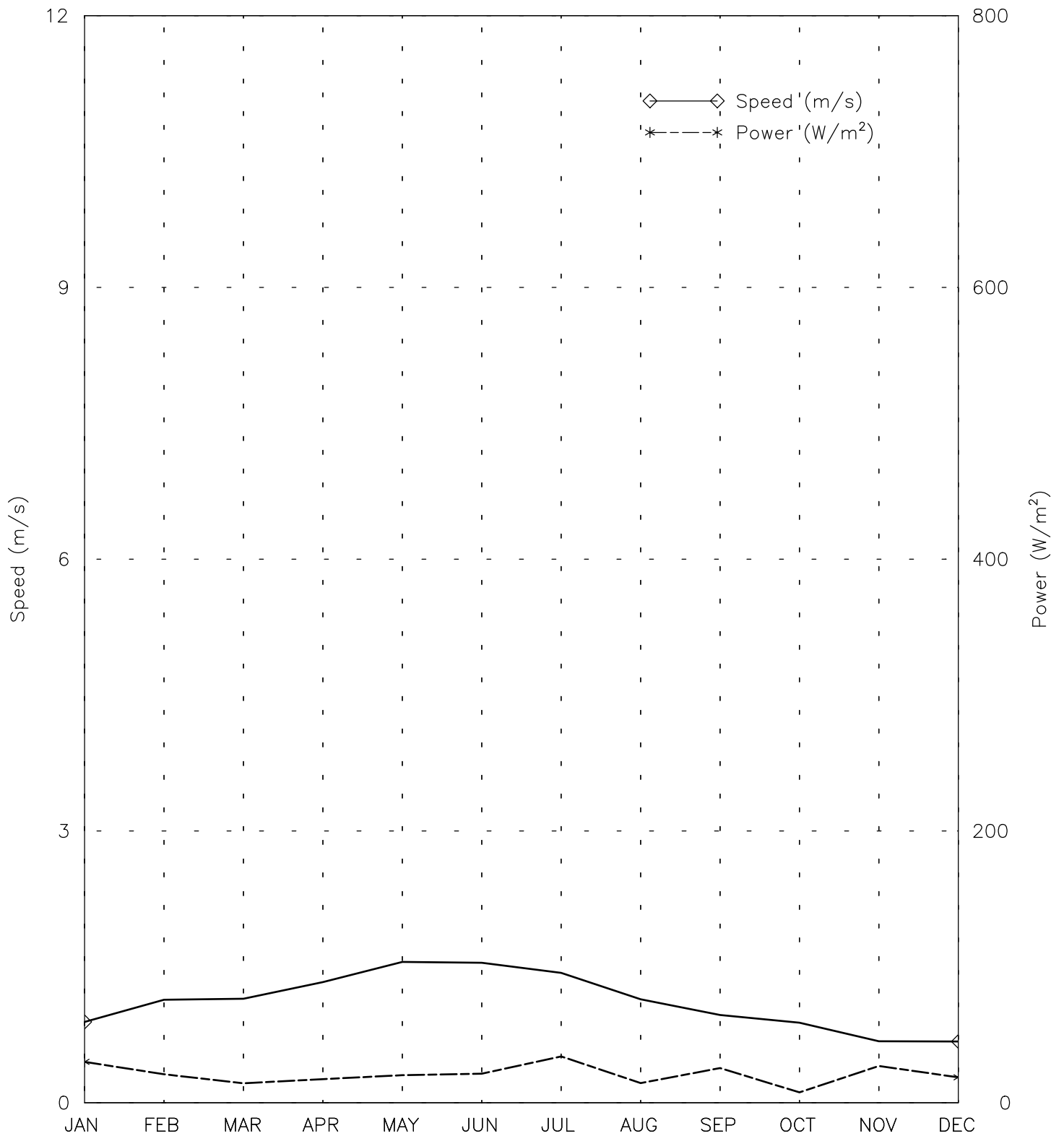


Fri Aug 25 13:43:10 2006

# SPEED AND POWER BY MONTH

SIBI - 416970

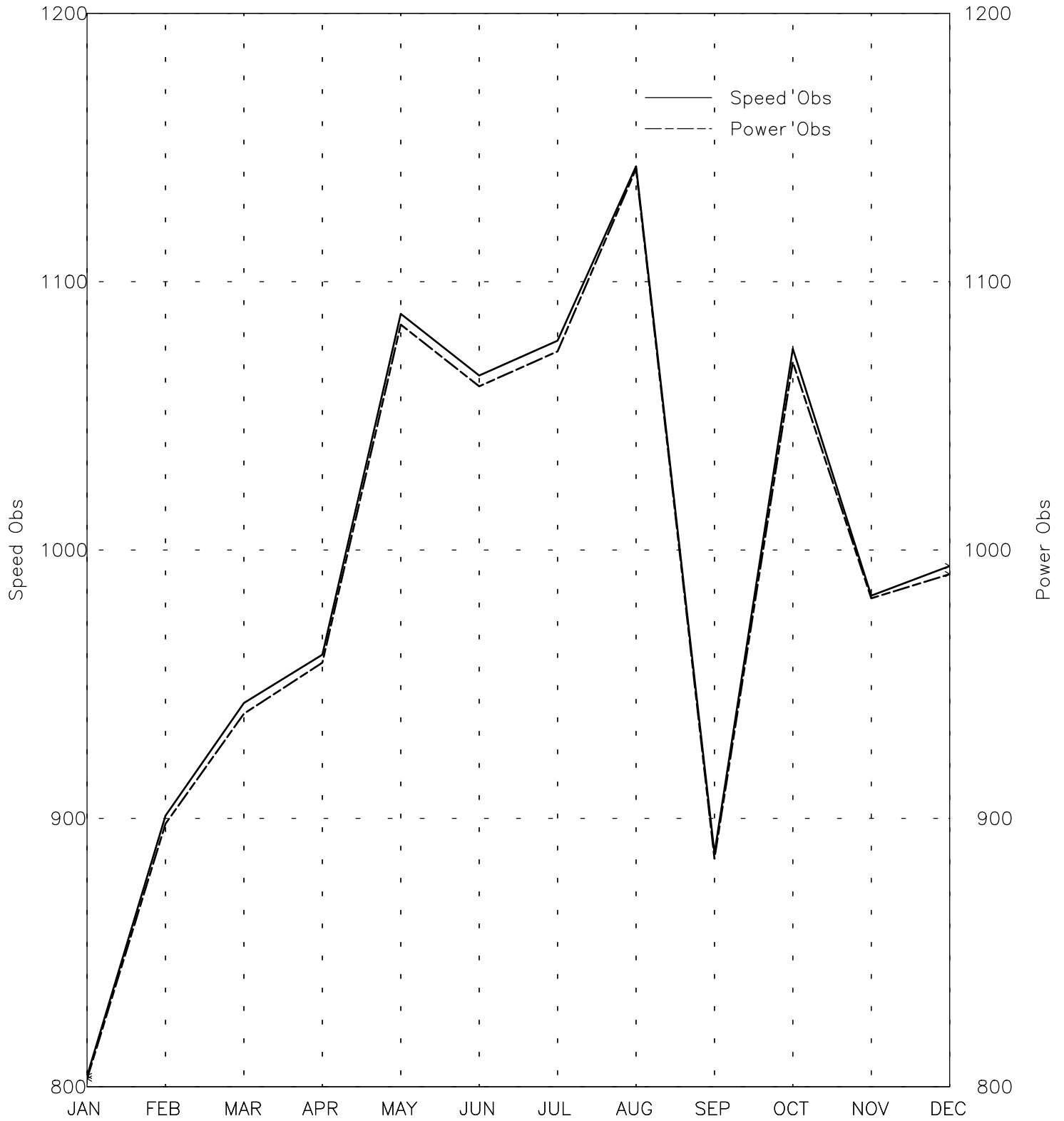
29° 33' N 67° 53' E - Elev 134m \*LST=GMT +5 hours NT= +5  
02/73-04/90 08/92-12/05



# OBSERVATIONS BY MONTH

SIBI - 416970

29° 33' N 67° 53' E - Elev 134m \*LST=GMT +5 hours NT= +5  
02/73-04/90 08/92-12/05

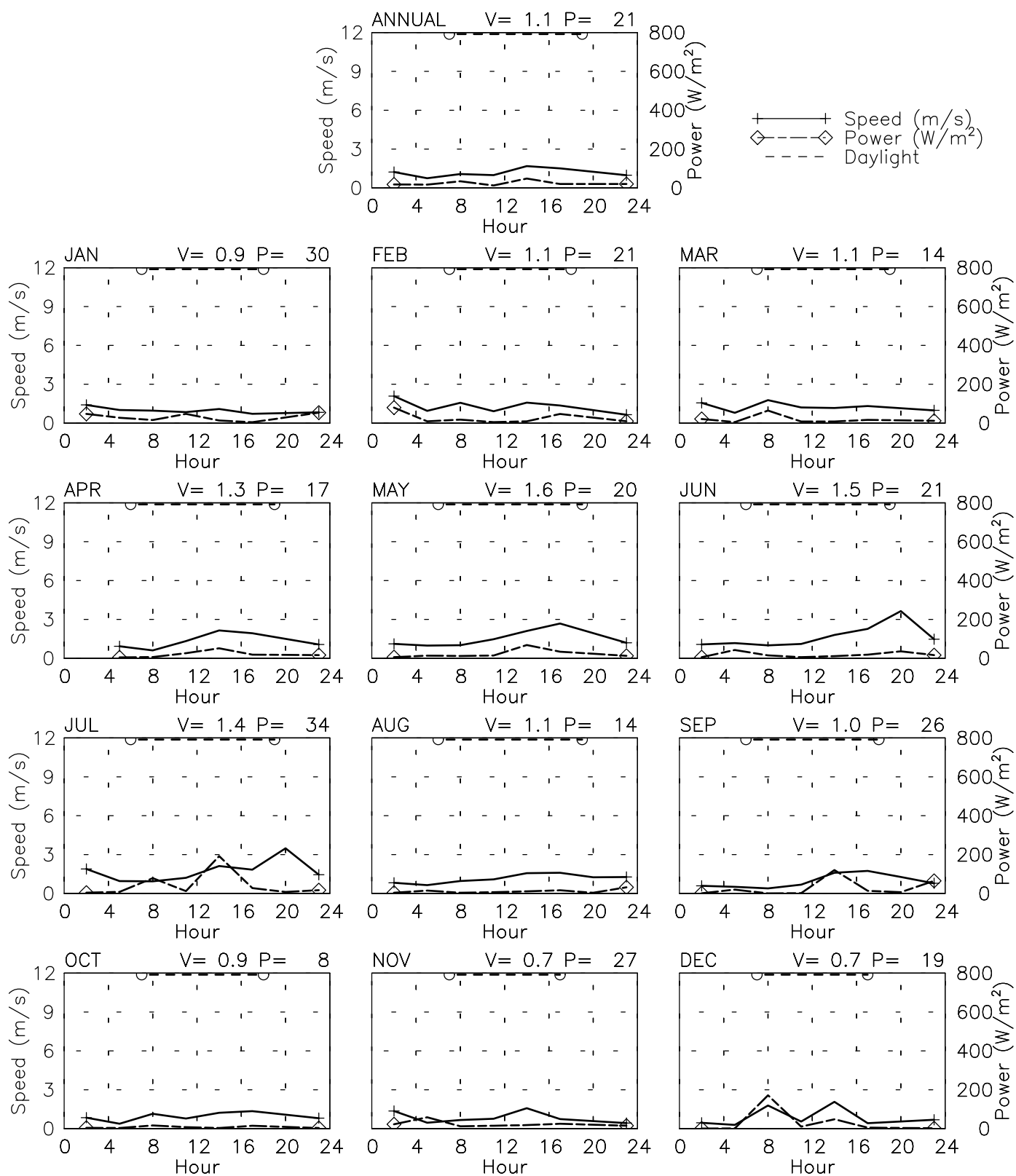


Month  
Fri Aug 25 13:43:12 2006

# SPEED AND POWER BY HOUR

SIBI - 416970

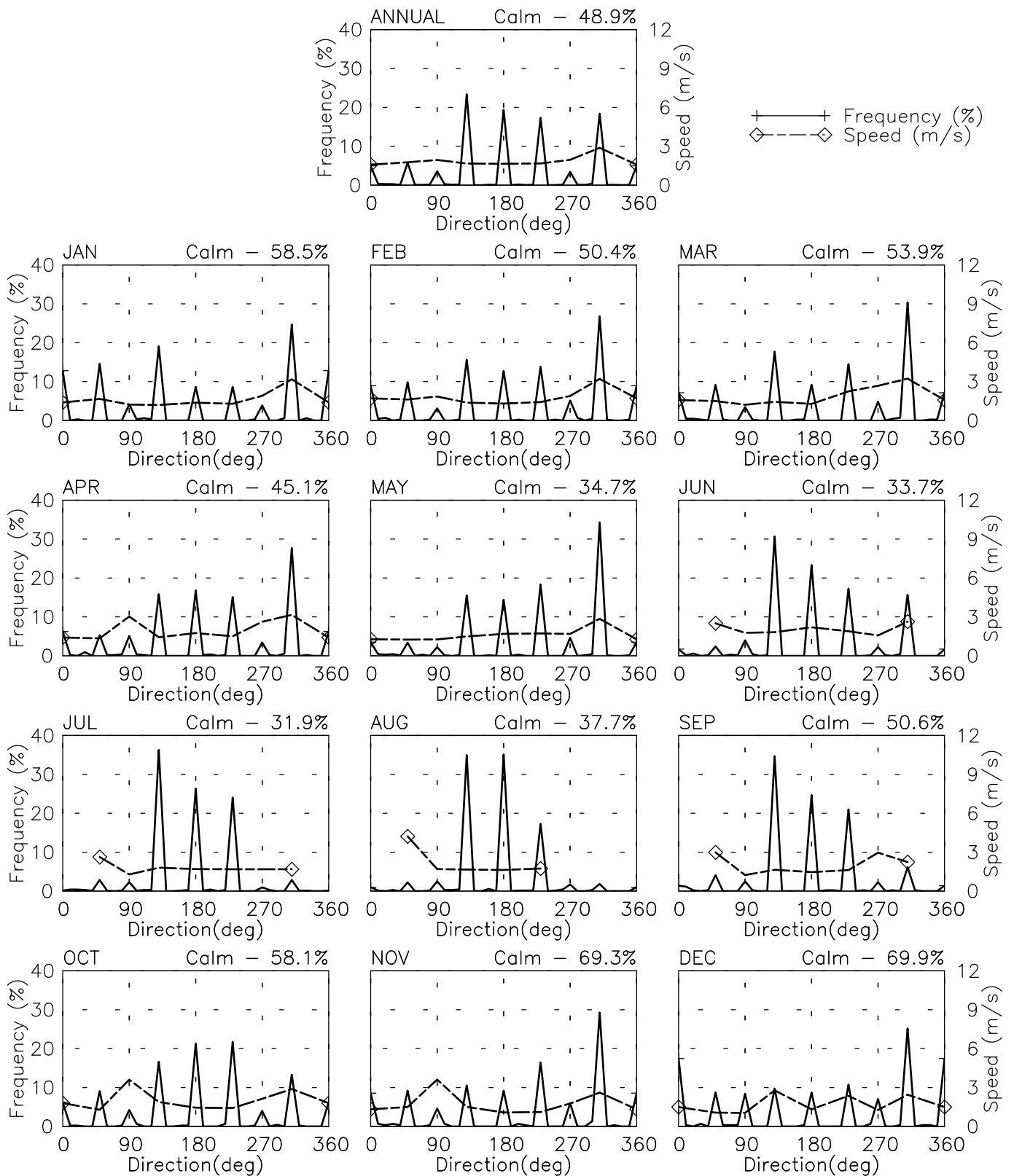
29° 33' N 67° 53' E - Elev 134m \*LST=GMT +5 hours NT= +5  
02/73-04/90 08/92-12/05



# FREQUENCY AND SPEED BY DIRECTION

SIBI - 416970

29° 33' N 67° 53' E - Elev 134m \*LST=GMT +5 hours NT= +5  
02/73-04/90 08/92-12/05

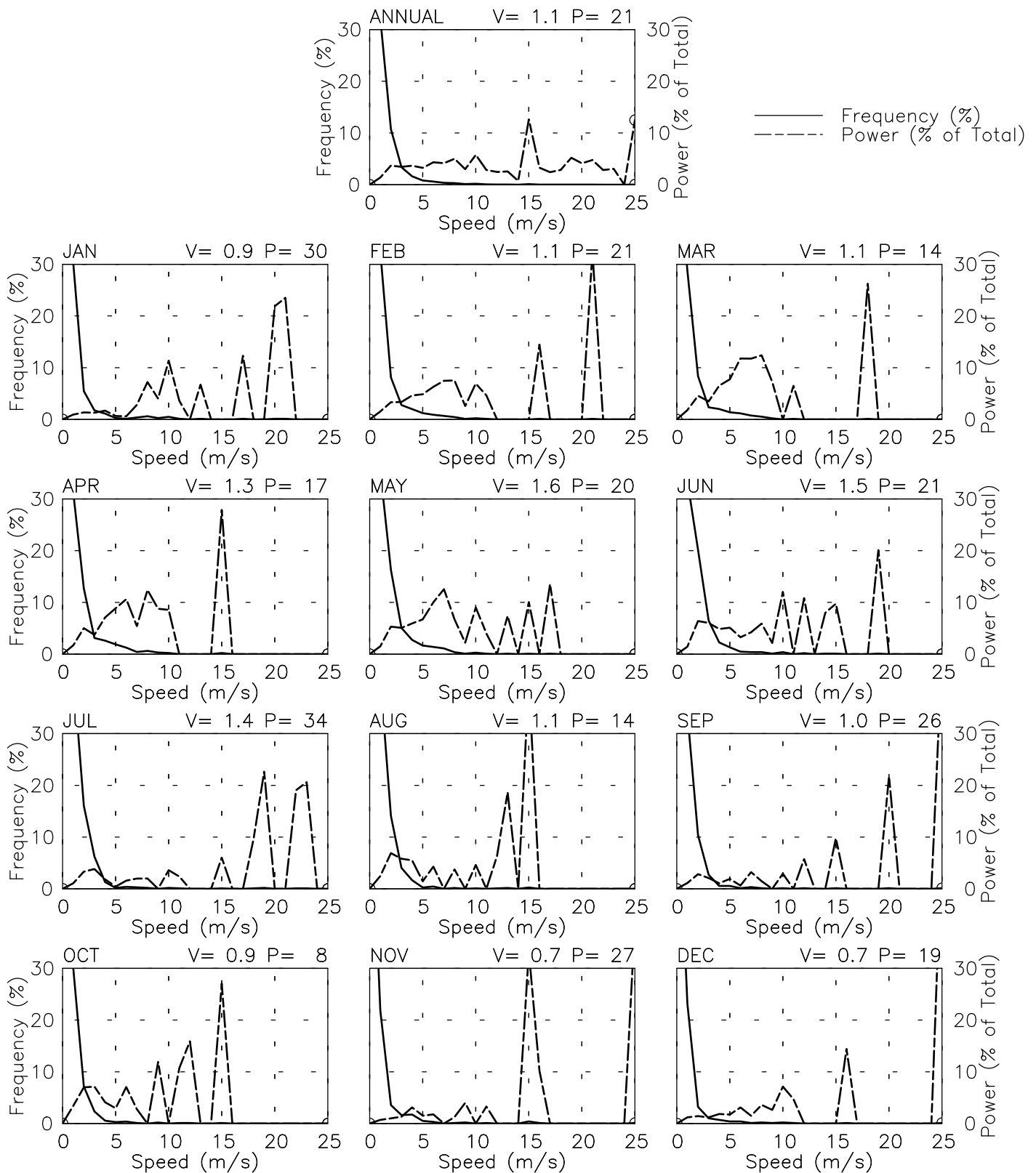


Fri Aug 25 13:43:13 2006

# FREQUENCY OF SPEED & PERCENT OF POWER BY SPEED

SIBI - 416970

29° 33' N 67° 53' E - Elev 134m \*LST=GMT +5 hours NT= +5  
02/73-04/90 08/92-12/05

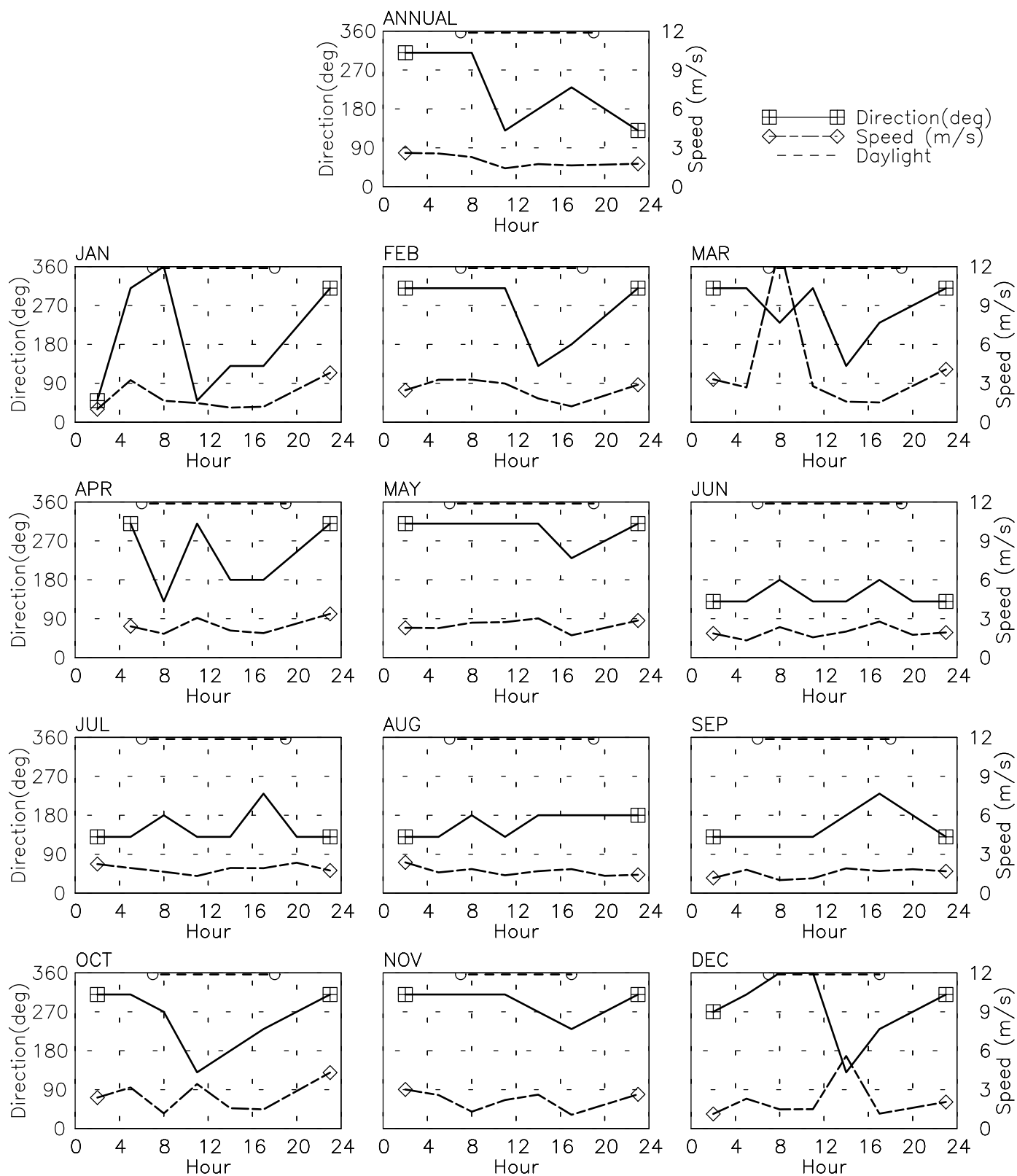


Fri Aug 25 13:43:14 2006

# PREVAILING DIRECTION & SPEED BY HOUR

SIBI - 416970

29° 33' N 67° 53' E - Elev 134m \*LST=GMT +5 hours NT= +5  
02/73-04/90 08/92-12/05



Fri Aug 25 13:43:14 2006