

Project: Description:

Tanana

Data from file(s)

Y:\5000\shared\Anemometer_Loan_Programs\Completed_Sites\Native American\Tanana - AK\Wind Data\Tanana 010920.csv
 Y:\5000\shared\Anemometer_Loan_Programs\Completed_Sites\Native American\Tanana - AK\Wind Data\Tanana 011119.csv
 Y:\5000\shared\Anemometer_Loan_Programs\Completed_Sites\Native American\Tanana - AK\Wind Data\Tanana 011206.csv
 Y:\5000\shared\Anemometer_Loan_Programs\Completed_Sites\Native American\Tanana - AK\Wind Data\Tanana 020227.csv

Printed/Page
07/24/2006 9:48 AM / 1

Licensed user:
National Renewable Energy Laboratory
1617 Cole Blvd. (MS3811)
US-GOLDEN, CO 80401
+1 303-384-7027

Calculated:
07/24/2006 9:48 AM/

Meteo data report, height: 20.0 m

Name of meteo object: Tanana

Data from: 09/20/2001 3:40 PM Data to: 10/13/2002 2:50 AM Observations: 55167 Observations per day: 144 Recovery rate: 99%

day	09/01	10/01	11/01	12/01	01/02	02/02	03/02	04/02	05/02	06/02	07/02	08/02	09/02	10/02
1		144	(142)	(143)	144	144	(143)	(140)	144	(133)	(141)	(126)	(143)	(132)
2		144	(122)	(127)	(135)	144	(120)	(142)	(140)	(142)	144	(122)	(126)	(131)
3		144	(139)	(135)	(125)	144	(143)	(139)	(142)	(141)	144	(103)	(123)	(140)
4		144	(135)	(100)	(134)	144	(113)	(141)	144	(138)	(140)	(110)	(143)	(133)
5		(137)	(133)	(133)	144	144	(143)	(141)	144	(143)	(133)	(139)	(143)	(134)
6		(139)	144	(143)	(143)	(143)	(141)	(143)	(142)	(135)	(142)	(141)	(127)	(132)
7		(137)	(142)	(139)	(143)	(140)	144	(143)	144	(142)	(136)	(134)	(131)	(142)
8		144	(135)	(129)	(138)	(140)	144	(141)	144	(138)	(141)	(141)	(143)	144
9		(140)	144	144	144	(141)	144	144	144	(143)	(137)	(140)	(133)	144
10		(139)	(139)	144	144	144	144	144	(138)	144	(130)	144	144	(137)
11		144	144	144	144	144	(143)	(143)	144	(136)	(138)	(135)	144	144
12		(143)	(138)	(140)	(130)	(142)	144	(135)	(126)	(135)	(131)	(140)	144	144
13		144	144	(104)	144	144	144	144	144	(136)	144	(140)	144	144
14		144	144	(112)	144	144	144	(141)	144	144	(140)	(138)	144	
15		(139)	(18)	(130)	(143)	(141)	144	(143)	(138)	(133)	(139)	(141)	(142)	
16		144	(0)	(124)	(143)	144	144	144	(142)	(136)	(105)	144	(143)	
17		(143)	(0)	(141)	144	(137)	(143)	144	(143)	(127)	(131)	144	(136)	
18		(137)	(0)	(135)	(131)	(122)	144	144	(134)	(140)	(131)	(143)	144	
19		144	(20)	(79)	(68)	(125)	(130)	(142)	(141)	(142)	144	(141)	144	
20	(45)	144	(143)	144	(125)	(130)	(137)	144	144	(142)	(134)	(140)	(138)	
21	(100)	144	144	144	(128)	(135)	(134)	144	144	144	(131)	(143)	(131)	
22	(139)	(139)	144	(141)	(143)	144	(138)	144	144	144	(136)	144	144	
23	144	(123)	144	(135)	144	144	144	(141)	(140)	(140)	(138)	(143)	(143)	
24	(138)	(125)	(136)	(74)	(142)	144	144	(141)	(138)	144	(138)	(129)	(137)	
25	(104)	(90)	(130)	(142)	(114)	144	(143)	(141)	(137)	(139)	144	(140)	(142)	
26	(110)	(127)	144	144	(95)	144	(141)	144	(143)	(128)	144	(124)	144	
27	(141)	144	144	(142)	(141)	144	144	(143)	144	(141)	(134)	(92)	144	
28	(141)	(141)	144	(135)	(126)	144	144	(143)	144	(131)	(137)	(121)	144	
29	(127)	(135)	144	144	(139)		(141)	(143)	144	(136)	(138)	(117)	144	
30	(143)	(135)	144	(141)	(128)		(138)	(135)	144	(142)	(131)	(135)	144	
31		144		144	(124)		(138)		(128)		(131)	(130)		
%	(89)	(96)	(82)	(91)	(93)	(98)	(97)	(99)	(98)	(96)	(95)	(92)	(97)	(96)

Project:
Tanana

Description:
Data from file(s)
Y:\5000\shared\Anemometer_Loan_Programs\Completed_Sites\Native American\Tanana - AK\Wind Data\Tanana 010920.csv
Y:\5000\shared\Anemometer_Loan_Programs\Completed_Sites\Native American\Tanana - AK\Wind Data\Tanana 011119.csv
Y:\5000\shared\Anemometer_Loan_Programs\Completed_Sites\Native American\Tanana - AK\Wind Data\Tanana 011206.csv
Y:\5000\shared\Anemometer_Loan_Programs\Completed_Sites\Native American\Tanana - AK\Wind Data\Tanana 020227.csv

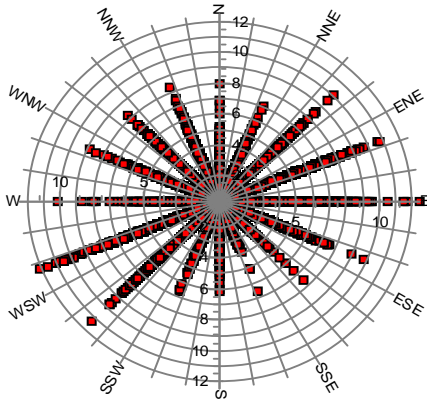
Printed/Page
07/24/2006 9:48 AM / 2

Licensed user:
National Renewable Energy Laboratory
1617 Cole Blvd. (MS3811)
US-GOLDEN, CO 80401
+1 303-384-7027

Calculated:
07/24/2006 9:48 AM/

Meteo data report, height: 20.0 m

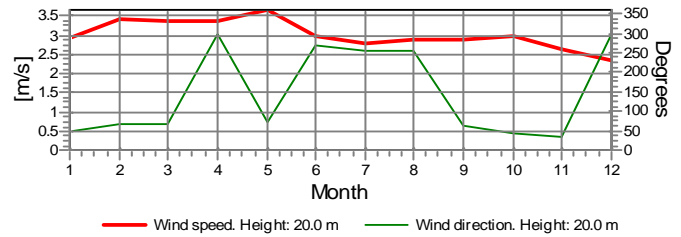
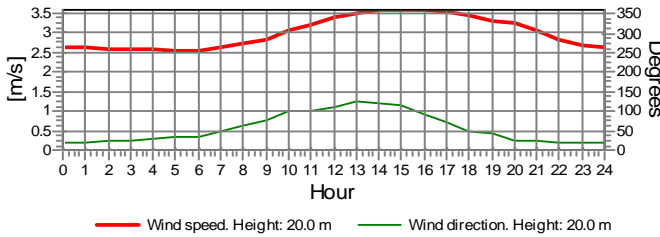
Name of meteo object: Tanana



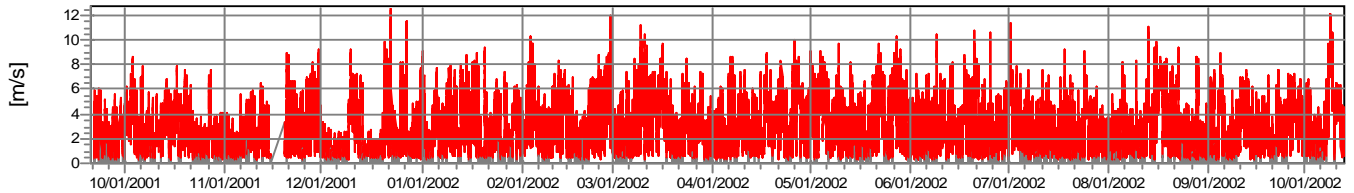
Monthly mean values of wind speed in m/s

Month	2001	2002	mean	mean of months
Jan	3.0	3.0	3.0	3.0
Feb	3.4	3.4	3.4	3.4
Mar	3.4	3.4	3.4	3.4
Apr	3.4	3.4	3.4	3.4
May	3.7	3.7	3.7	3.7
Jun	3.0	3.0	3.0	3.0
Jul	2.8	2.8	2.8	2.8
Aug	2.9	2.9	2.9	2.9
Sep	2.2	3.1	2.9	2.6
Oct	2.7	3.6	3.0	3.2
Nov	2.7	2.7	2.7	2.7
Dec	2.3	2.3	2.3	2.3
mean, all data	2.5	3.2	3.0	
mean of months	2.5	3.2		3.0

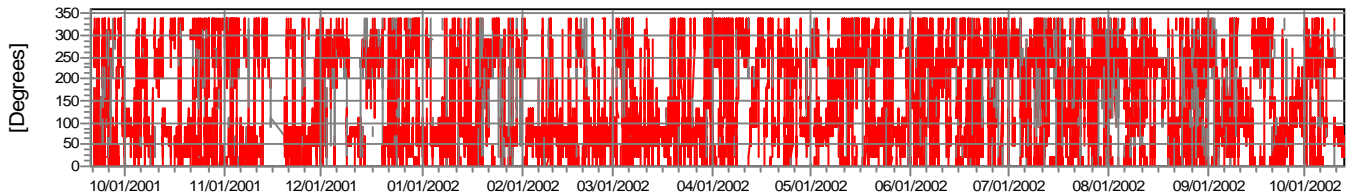
Wind speed [m/s]



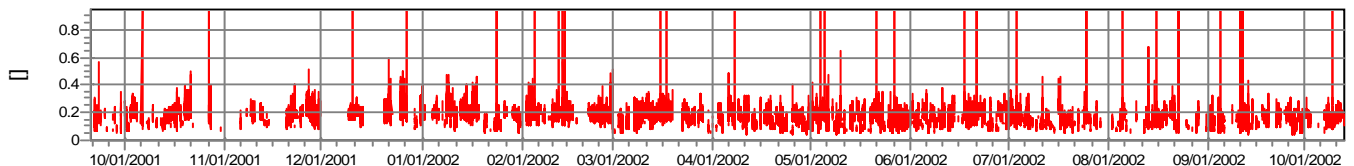
Wind speed



Wind direction



Turbulence intensity
V>4.0 m/s



Project:

Tanana

Description:

Data from file(s)
 Y:\5000\shared\Anemometer_Loan_Programs\Completed_Sites\Native American\Tanana - AK\Wind Data\Tanana 010920.csv
 Y:\5000\shared\Anemometer_Loan_Programs\Completed_Sites\Native American\Tanana - AK\Wind Data\Tanana 011119.csv
 Y:\5000\shared\Anemometer_Loan_Programs\Completed_Sites\Native American\Tanana - AK\Wind Data\Tanana 011206.csv
 Y:\5000\shared\Anemometer_Loan_Programs\Completed_Sites\Native American\Tanana - AK\Wind Data\Tanana 020227.csv

Printed/Page

07/24/2006 9:48 AM / 3

Licensed user:

National Renewable Energy Laboratory
 1617 Cole Blvd. (MS3811)
 US-GOLDEN, CO 80401
 +1 303-384-7027

Calculated:

07/24/2006 9:48 AM/

Meteo data report, height: 20.0 m

Name of meteo object: Tanana

Frequency

Wind speed m/s	Sum	N	NNE	ENE	E	ESE	SSE	S	SSW	WSW	W	WNW	NNW
0.00 - 0.49	1,946	123	109	241	95	90	175	98	120	342	201	128	224
0.50 - 1.49	11,644	802	752	1,496	675	702	754	326	440	2,097	1,472	806	1,322
1.50 - 2.49	10,584	774	872	1,958	973	760	446	173	240	1,826	904	617	1,041
2.50 - 3.49	9,642	524	879	2,431	1,472	721	246	138	222	1,442	451	416	700
3.50 - 4.49	7,360	165	306	2,350	1,476	500	74	56	121	1,292	214	240	566
4.50 - 5.49	5,066	45	83	1,850	1,187	277	24	44	48	940	133	114	321
5.50 - 6.49	3,509	20	15	1,280	909	205	13	5	21	739	79	75	148
6.50 - 7.49	1,766	15	10	674	417	46	6	2	6	463	18	41	68
7.50 - 8.49	694	6	1	236	164	15	3	0	8	206	18	10	27
8.50 - 9.49	284	1	0	91	65	4	1	0	0	107	11	2	2
9.50 - 10.49	106	0	0	25	15	2	0	0	0	57	5	2	0
10.50 - 11.49	56	0	0	10	10	1	0	0	0	34	1	0	0
11.50 - 12.49	20	0	0	2	4	0	0	0	0	14	0	0	0
12.50 - 13.49	1	0	0	1	0	0	0	0	0	0	0	0	0
Sum	52,678	2,475	3,027	12,645	7,462	3,323	1,742	842	1,226	9,559	3,507	2,451	4,419

Turbulence

Wind speed	Sum	N	NNE	ENE	E	ESE	SSE	S	SSW	WSW	W	WNW	NNW
0.00 - 0.49	0.000	0.000	0.000	0.000	0.000	0.000	0.000	0.000	0.000	0.000	0.000	0.000	0.000
0.50 - 1.49	0.000	0.000	0.000	0.000	0.000	0.000	0.000	0.000	0.000	0.000	0.000	0.000	0.000
1.50 - 2.49	0.000	0.000	0.000	0.000	0.000	0.000	0.000	0.000	0.000	0.000	0.000	0.000	0.000
2.50 - 3.49	0.000	0.000	0.000	0.000	0.000	0.000	0.000	0.000	0.000	0.000	0.000	0.000	0.000
3.50 - 4.49	0.181	0.177	0.132	0.216	0.176	0.114	0.206	0.201	0.174	0.142	0.213	0.190	0.199
4.50 - 5.49	0.180	0.187	0.148	0.212	0.172	0.109	0.185	0.173	0.189	0.143	0.216	0.181	0.193
5.50 - 6.49	0.181	0.217	0.182	0.207	0.174	0.111	0.204	0.201	0.174	0.151	0.222	0.225	0.205
6.50 - 7.49	0.171	0.219	0.167	0.197	0.159	0.098	0.168	0.220	0.173	0.140	0.203	0.190	0.201
7.50 - 8.49	0.167	0.204	0.213	0.194	0.155	0.093	0.149		0.176	0.141	0.182	0.211	0.193
8.50 - 9.49	0.158	0.181		0.191	0.149	0.098	0.176			0.139	0.115	0.203	0.231
9.50 - 10.49	0.149			0.182	0.135	0.115				0.139	0.128	0.195	
10.50 - 11.49	0.146			0.174	0.179	0.103				0.131	0.091		
11.50 - 12.49	0.126			0.144	0.143					0.119			
12.50 - 13.49	0.169			0.169									
Sum	0.178	0.191	0.145	0.208	0.171	0.110	0.193	0.185	0.180	0.144	0.209	0.196	0.198

Project:
Tanana

Description:
Data from file(s)
Y:\5000\shared\Anemometer_Loan_Programs\Completed_Sites\Native American\Tanana - AK\Wind Data\Tanana 010920.csv
Y:\5000\shared\Anemometer_Loan_Programs\Completed_Sites\Native American\Tanana - AK\Wind Data\Tanana 011119.csv
Y:\5000\shared\Anemometer_Loan_Programs\Completed_Sites\Native American\Tanana - AK\Wind Data\Tanana 011206.csv
Y:\5000\shared\Anemometer_Loan_Programs\Completed_Sites\Native American\Tanana - AK\Wind Data\Tanana 020227.csv

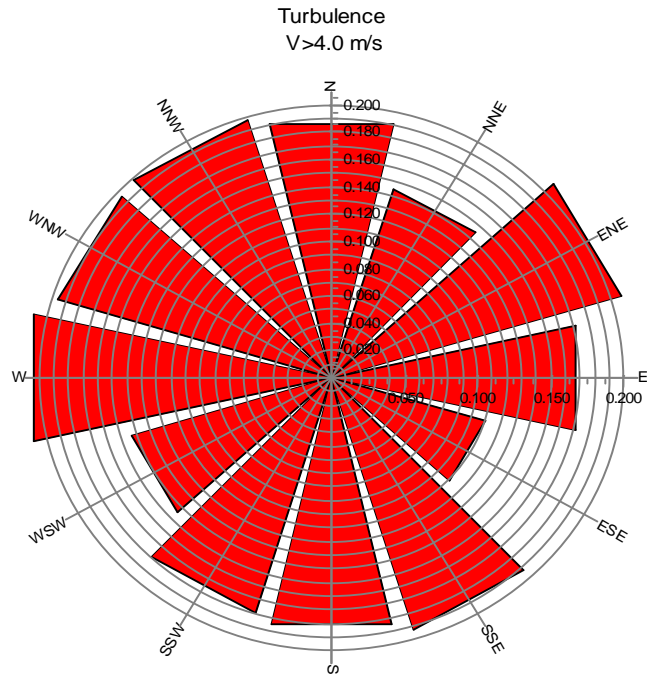
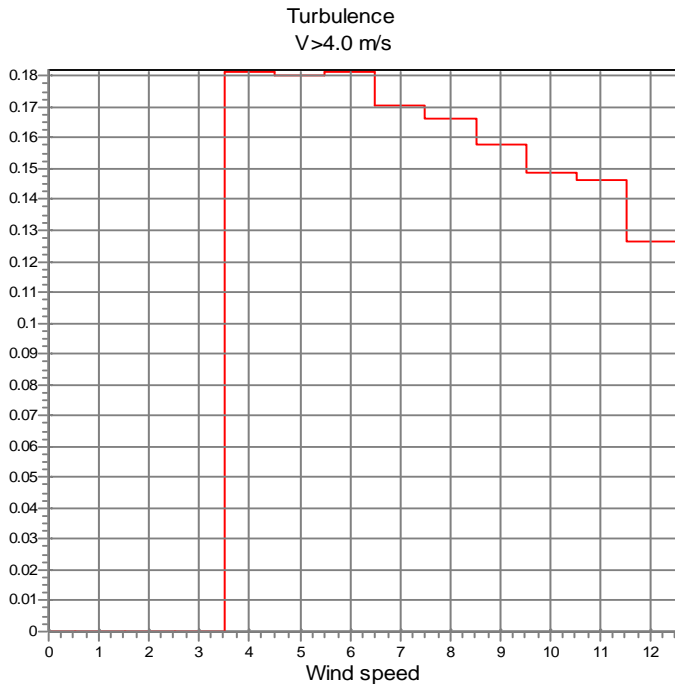
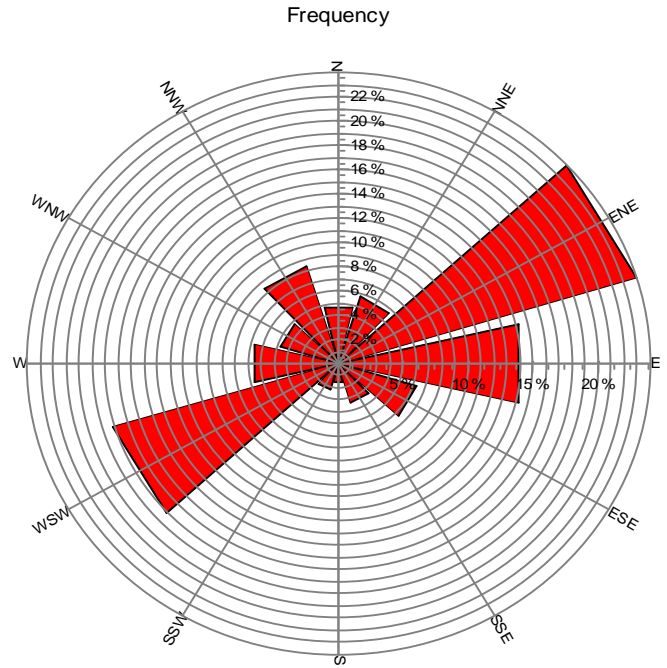
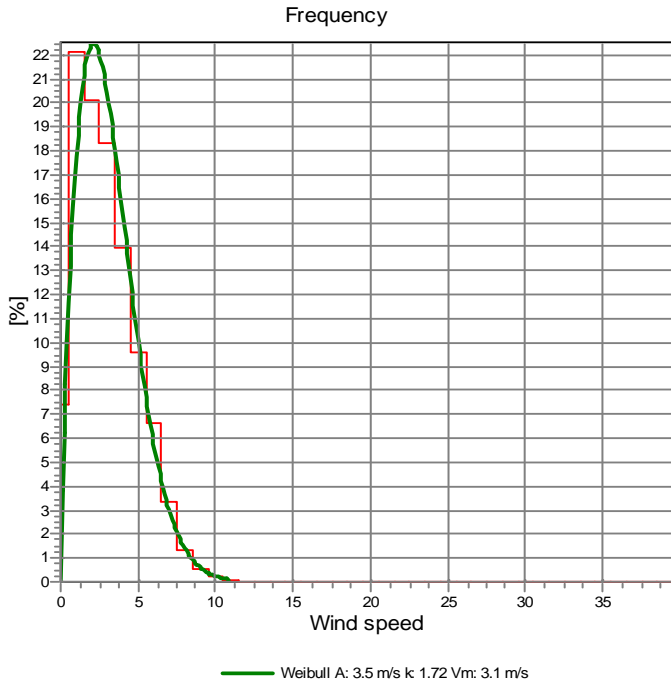
Printed/Page
07/24/2006 9:48 AM / 4

Licensed user:
National Renewable Energy Laboratory
1617 Cole Blvd. (MS3811)
US-GOLDEN, CO 80401
+1 303-384-7027

Calculated:
07/24/2006 9:48 AM/

Meteo data report, height: 20.0 m

Name of meteo object: Tanana



Project: **Tanana**
 Description: Data from file(s)
 Y:\5000\shared\Anemometer_Loan_Programs\Completed_Sites\Native American\Tanana - AK\Wind Data\Tanana 010920.csv
 Y:\5000\shared\Anemometer_Loan_Programs\Completed_Sites\Native American\Tanana - AK\Wind Data\Tanana 011119.csv
 Y:\5000\shared\Anemometer_Loan_Programs\Completed_Sites\Native American\Tanana - AK\Wind Data\Tanana 011206.csv
 Y:\5000\shared\Anemometer_Loan_Programs\Completed_Sites\Native American\Tanana - AK\Wind Data\Tanana 020227.csv

Printed/Page: 07/24/2006 9:48 AM / 5
 Licensed user: **National Renewable Energy Laboratory**
 1617 Cole Blvd. (MS3811)
 US-GOLDEN, CO 80401
 +1 303-384-7027
 Calculated: 07/24/2006 9:48 AM/

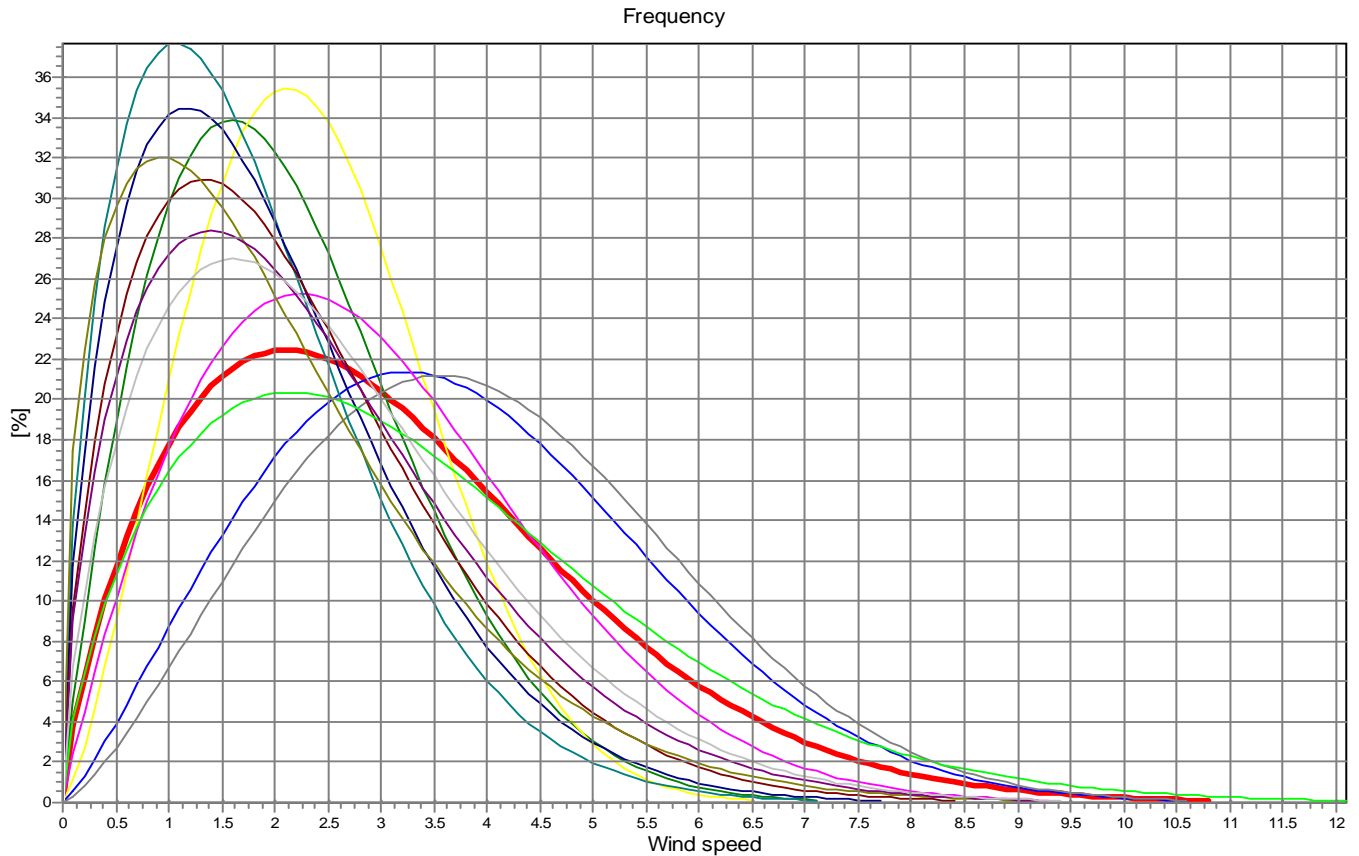
Meteo data report, height: 20.0 m

Name of meteo object: Tanana

Weibull Data

k-parameter correction: 0.0080/m

Sector	A- parameter [m/s]	Mean wind speed [m/s]	k- parameter	Frequency	Frequency [%]	Wind shear
0-N	2.42	2.15	1.856	4.70	4.7	0.00
1-NNE	2.69	2.39	2.327	5.75	5.7	0.00
2-ENE	4.28	3.79	2.192	24.00	24.0	0.00
3-E	4.52	4.01	2.336	14.17	14.2	0.00
4-ESE	3.30	2.93	1.910	6.31	6.3	0.00
5-SSE	2.01	1.80	1.579	3.31	3.3	0.00
6-S	2.20	1.97	1.583	1.60	1.6	0.00
7-SSW	2.46	2.21	1.595	2.33	2.3	0.00
8-WSW	3.79	3.39	1.650	18.15	18.1	0.00
9-W	2.29	2.09	1.393	6.66	6.7	0.00
10-WNW	2.66	2.39	1.569	4.65	4.7	0.00
11-NNW	2.85	2.55	1.642	8.39	8.4	0.00
mean	3.50	3.12	1.720	100.00	100.0	0.00



— Total A: 3.5 m/s k 1.72 Vm: 3.1 m/s
 — N A: 2.4 m/s k 1.86 Vm: 2.1 m/s
 — NNE A: 2.7 m/s k 2.33 Vm: 2.4 m/s
 — ENE A: 4.3 m/s k 2.19 Vm: 3.8 m/s
— E A: 4.5 m/s k 2.34 Vm: 4.0 m/s
 — ESE A: 3.3 m/s k 1.91 Vm: 2.9 m/s
 — SSE A: 2.0 m/s k 1.58 Vm: 1.8 m/s
 — S A: 2.2 m/s k 1.58 Vm: 2.0 m/s
— SSW A: 2.5 m/s k 1.60 Vm: 2.2 m/s
 — WSW A: 3.8 m/s k 1.65 Vm: 3.4 m/s
 — W A: 2.3 m/s k 1.39 Vm: 2.1 m/s
 — WNW A: 2.7 m/s k 1.57 Vm: 2.4 m/s
— NNW A: 2.9 m/s k 1.64 Vm: 2.5 m/s