

Project: **Quinault**  
 Description:  
 Data from file(s)  
 Y:\5000\shared\Anemometer\_Loan\_Programs\WPA.NA.Loans\Quinault #3 - WA\Wind Data\Quinault-Pt Grenville 050420.csv  
 Y:\5000\shared\Anemometer\_Loan\_Programs\WPA.NA.Loans\Quinault #3 - WA\Wind Data\Quinault-Pt Grenville 040722.csv  
 Y:\5000\shared\Anemometer\_Loan\_Programs\WPA.NA.Loans\Quinault #3 - WA\Wind Data\Quinault-Pt Grenville 040826.csv  
 Y:\5000\shared\Anemometer\_Loan\_Programs\WPA.NA.Loans\Quinault #3 - WA\Wind Data\Quinault-Pt Grenville 041006.csv  
 Y:\5000\shared\Anemometer\_Loan\_Programs\WPA.NA.Loans\Quinault #3 - WA\Wind Data\Quinault-Pt Grenville 041105.csv  
 Y:\5000\shared\Anemometer\_Loan\_Programs\WPA.NA.Loans\Quinault #3 - WA\Wind Data\Quinault-Pt Grenville 041203.csv  
 Y:\5000\shared\Anemometer\_Loan\_Programs\WPA.NA.Loans\Quinault #3 - WA\Wind Data\Quinault-Pt Grenville 050112.csv  
 Y:\5000\shared\Anemometer\_Loan\_Programs\WPA.NA.Loans\Quinault #3 - WA\Wind Data\Quinault-Pt Grenville 050208.csv  
 Y:\5000\shared\Anemometer\_Loan\_Programs\WPA.NA.Loans\Quinault #3 - WA\Wind Data\Quinault-Pt Grenville 050314.csv  
 Y:\5000\shared\Anemometer\_Loan\_Programs\WPA.NA.Loans\Quinault #3 - WA\Wind Data\Quinault-Pt Grenville 040625.csv  
 Y:\5000\shared\Anemometer\_Loan\_Programs\WPA.NA.Loans\Quinault #3 - WA\Wind Data\Quinault-Pt Grenville 050523.csv

Printed/Page  
 09/14/2005 11:50 AM / 1  
 Licensed user:  
**National Renewable Energy Laboratory**  
 1617 Cole Blvd. (MS3811)  
 US-GOLDEN, CO 80401  
 +1 303-384-7027  
 Calculated:  
 09/14/2005 11:49 AM/

**Meteo data report, height: 20.0 m**

Name of meteo object: Quinault - Pt Grenville

Data from: 06/25/2004 2:00 PM Data to: 07/07/2005 2:00 PM Observations: 54287 Observations per day: 144 Recovery rate: 100%

day	06/04	07/04	08/04	09/04	10/04	11/04	12/04	01/05	02/05	03/05	04/05	05/05	06/05	07/05
1		(117)	(117)	144	(142)	144	144	144	144	144	144	(124)	144	144
2		144	144	144	(118)	144	144	(127)	(129)	144	144	144	144	144
3		144	144	144	(134)	144	144	(123)	(81)	144	144	144	144	(131)
4		144	144	144	144	144	144	144	144	144	144	144	144	(130)
5		144	(134)	144	144	144	144	144	144	144	144	144	144	144
6		(133)	144	144	(142)	144	144	144	144	(128)	144	144	144	144
7		144	(128)	144	144	(120)	144	144	144	144	144	144	144	(85)
8		144	(131)	144	144	(135)	144	144	144	144	144	144	144	144
9		144	144	(121)	144	(107)	144	144	144	144	144	144	144	144
10		(114)	144	(134)	(125)	(143)	144	144	144	144	144	144	144	144
11		(124)	144	(112)	(107)	144	144	(118)	144	144	144	144	144	144
12		144	144	(109)	144	144	144	144	(129)	144	144	144	144	144
13		144	144	144	(108)	144	144	144	144	(133)	144	144	144	144
14		144	144	144	(110)	144	144	144	144	(132)	144	144	144	144
15		(111)	(102)	144	144	144	144	144	144	144	144	144	144	144
16		144	144	144	144	144	144	144	144	144	144	144	144	144
17		(134)	144	144	144	144	144	144	144	144	144	144	144	144
18		144	144	144	144	144	144	144	144	144	144	144	144	144
19		144	144	144	144	144	144	144	144	144	144	144	144	144
20		144	144	(120)	144	144	144	144	144	144	144	144	144	144
21		144	144	144	144	144	144	144	144	144	144	144	144	144
22		(124)	144	144	144	144	144	144	144	144	144	144	144	144
23		(101)	144	(130)	144	144	(135)	144	144	144	144	144	144	144
24		144	144	(134)	144	144	(135)	144	144	144	144	144	144	144
25	(36)	144	144	(125)	144	144	144	(134)	144	144	144	144	144	144
26	(134)	144	(130)	144	144	144	144	144	144	144	144	144	144	144
27	144	(130)	(122)	(106)	144	144	144	144	144	144	144	144	144	144
28	144	(121)	(79)	(99)	144	144	144	144	144	144	144	144	144	144
29	144	(109)	(139)	144	144	144	144		144	144	144	144	144	144
30	144	144	144	(136)	144	144	144		144	144	144	144	144	144
31		(130)	144		144		144	144		144		144		
%	(96)	(94)	(95)	(94)	(96)	(98)	(100)	(99)	(98)	(99)	100	(100)	100	(97)

Project:  
**Quinault**

Description:  
Data from file(s)  
Y:\5000\shared\Anemometer\_Loan\_Programs\WPA.NA.Loans\Quinault #3 - WA\Wind Data\Quinault-Pt Grenville 050420.csv  
Y:\5000\shared\Anemometer\_Loan\_Programs\WPA.NA.Loans\Quinault #3 - WA\Wind Data\Quinault-Pt Grenville 040722.csv  
Y:\5000\shared\Anemometer\_Loan\_Programs\WPA.NA.Loans\Quinault #3 - WA\Wind Data\Quinault-Pt Grenville 040826.csv  
Y:\5000\shared\Anemometer\_Loan\_Programs\WPA.NA.Loans\Quinault #3 - WA\Wind Data\Quinault-Pt Grenville 041006.csv  
Y:\5000\shared\Anemometer\_Loan\_Programs\WPA.NA.Loans\Quinault #3 - WA\Wind Data\Quinault-Pt Grenville 041105.csv  
Y:\5000\shared\Anemometer\_Loan\_Programs\WPA.NA.Loans\Quinault #3 - WA\Wind Data\Quinault-Pt Grenville 041203.csv  
Y:\5000\shared\Anemometer\_Loan\_Programs\WPA.NA.Loans\Quinault #3 - WA\Wind Data\Quinault-Pt Grenville 050112.csv  
Y:\5000\shared\Anemometer\_Loan\_Programs\WPA.NA.Loans\Quinault #3 - WA\Wind Data\Quinault-Pt Grenville 050208.csv  
Y:\5000\shared\Anemometer\_Loan\_Programs\WPA.NA.Loans\Quinault #3 - WA\Wind Data\Quinault-Pt Grenville 050314.csv  
Y:\5000\shared\Anemometer\_Loan\_Programs\WPA.NA.Loans\Quinault #3 - WA\Wind Data\Quinault-Pt Grenville 040625.csv  
Y:\5000\shared\Anemometer\_Loan\_Programs\WPA.NA.Loans\Quinault #3 - WA\Wind Data\Quinault-Pt Grenville 050523.csv

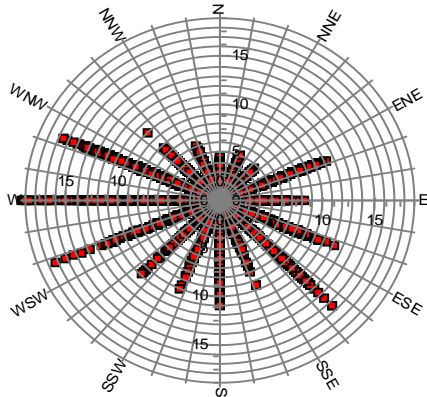
Printed/Page  
09/14/2005 11:50 AM / 2

Licensed user:  
**National Renewable Energy Laboratory**  
1617 Cole Blvd. (MS3811)  
US-GOLDEN, CO 80401  
+1 303-384-7027

Calculated:  
09/14/2005 11:49 AM/

**Meteo data report, height: 20.0 m**

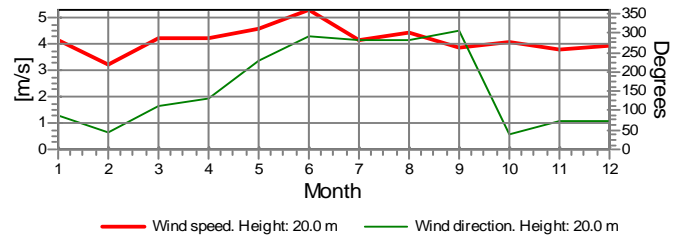
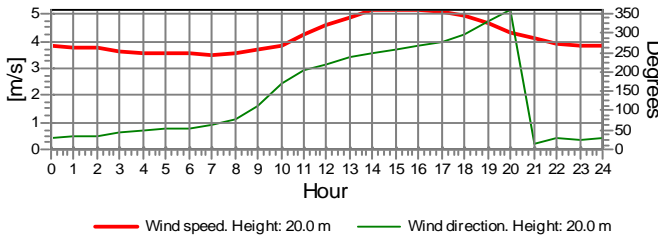
Name of meteo object: Quinault - Pt Grenville



**Monthly mean values of wind speed in m/s**

Month	2004	2005	mean	mean of months
Jan	4.2	4.2	4.2	4.2
Feb	3.2	3.2	3.2	3.2
Mar	4.2	4.2	4.2	4.2
Apr	4.2	4.2	4.2	4.2
May	4.6	4.6	4.6	4.6
Jun	6.4	5.1	5.3	5.8
Jul	4.4	3.3	4.2	3.8
Aug	4.5	4.5	4.5	4.5
Sep	3.9	3.9	3.9	3.9
Oct	4.1	4.1	4.1	4.1
Nov	3.8	3.8	3.8	3.8
Dec	3.9	3.9	3.9	3.9
mean, all data	4.2	4.2	4.2	
mean of months	4.4	4.1		4.2

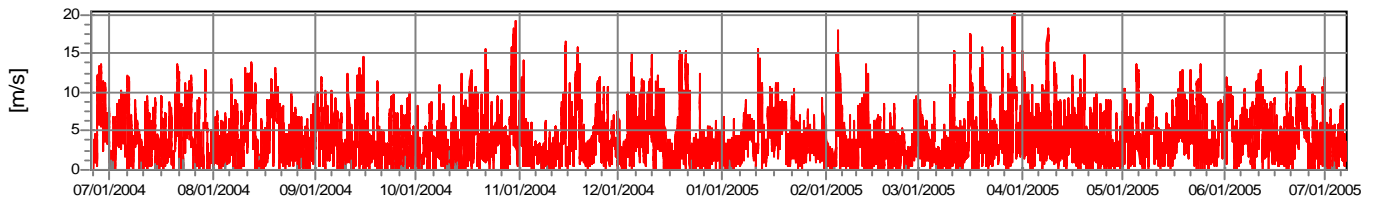
Wind speed [m/s]



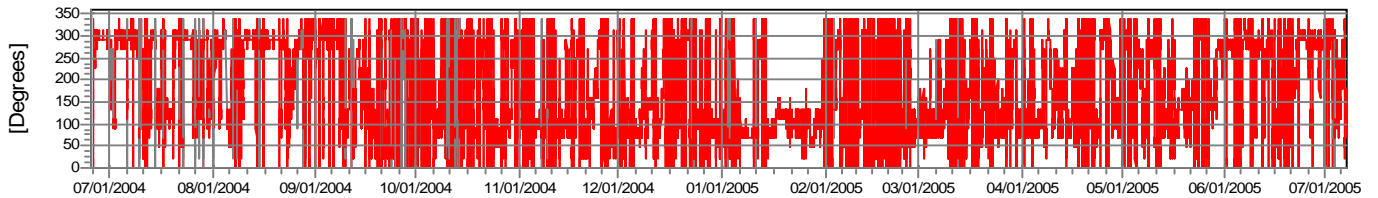
— Wind speed. Height: 20.0 m — Wind direction. Height: 20.0 m

— Wind speed. Height: 20.0 m — Wind direction. Height: 20.0 m

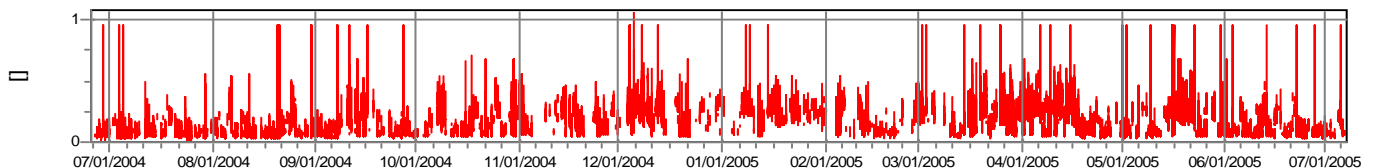
**Wind speed**



**Wind direction**



**Turbulence intensity  
V>4.0 m/s**



Project: **Quinault**  
 Description: Data from file(s)  
 Y:\5000\shared\Anemometer\_Loan\_Programs\WPA.NA.Loans\Quinault #3 - WA\Wind Data\Quinault-Pt Grenville 050420.csv  
 Y:\5000\shared\Anemometer\_Loan\_Programs\WPA.NA.Loans\Quinault #3 - WA\Wind Data\Quinault-Pt Grenville 040722.csv  
 Y:\5000\shared\Anemometer\_Loan\_Programs\WPA.NA.Loans\Quinault #3 - WA\Wind Data\Quinault-Pt Grenville 040826.csv  
 Y:\5000\shared\Anemometer\_Loan\_Programs\WPA.NA.Loans\Quinault #3 - WA\Wind Data\Quinault-Pt Grenville 041006.csv  
 Y:\5000\shared\Anemometer\_Loan\_Programs\WPA.NA.Loans\Quinault #3 - WA\Wind Data\Quinault-Pt Grenville 041105.csv  
 Y:\5000\shared\Anemometer\_Loan\_Programs\WPA.NA.Loans\Quinault #3 - WA\Wind Data\Quinault-Pt Grenville 041203.csv  
 Y:\5000\shared\Anemometer\_Loan\_Programs\WPA.NA.Loans\Quinault #3 - WA\Wind Data\Quinault-Pt Grenville 050112.csv  
 Y:\5000\shared\Anemometer\_Loan\_Programs\WPA.NA.Loans\Quinault #3 - WA\Wind Data\Quinault-Pt Grenville 050208.csv  
 Y:\5000\shared\Anemometer\_Loan\_Programs\WPA.NA.Loans\Quinault #3 - WA\Wind Data\Quinault-Pt Grenville 050314.csv  
 Y:\5000\shared\Anemometer\_Loan\_Programs\WPA.NA.Loans\Quinault #3 - WA\Wind Data\Quinault-Pt Grenville 040625.csv  
 Y:\5000\shared\Anemometer\_Loan\_Programs\WPA.NA.Loans\Quinault #3 - WA\Wind Data\Quinault-Pt Grenville 050523.csv

Printed/Page: 09/14/2005 11:50 AM / 3  
 Licensed user: **National Renewable Energy Laboratory**  
 1617 Cole Blvd. (MS3811)  
 US-GOLDEN, CO 80401  
 +1 303-384-7027  
 Calculated: 09/14/2005 11:49 AM/

**Meteo data report, height: 20.0 m**

Name of meteo object: Quinault - Pt Grenville

**Frequency**

Wind speed	Sum	N	NNE	NE	ENE	E	ESE	SE	SSE	S	SSW	SW	WSW	W	WNW	NW	NNW
0.00 - 0.49	2,010	111	93	123	156	195	140	84	94	62	93	125	159	201	187	125	
0.50 - 1.49	6,542	255	357	340	596	1,169	747	512	268	150	197	349	262	286	485	337	232
1.50 - 2.49	8,691	302	425	490	1,076	1,735	1,139	591	358	172	190	316	237	367	596	470	227
2.50 - 3.49	8,784	200	422	530	1,000	1,642	1,160	594	289	159	167	226	273	421	805	597	299
3.50 - 4.49	6,868	84	232	289	768	751	901	470	157	156	106	169	251	523	1,084	653	274
4.50 - 5.49	5,265	10	68	31	754	346	653	384	72	100	101	114	216	545	1,262	475	134
5.50 - 6.49	4,005	0	2	3	575	157	486	279	54	57	62	73	154	574	1,309	178	42
6.50 - 7.49	3,115	1	0	0	437	39	384	191	30	37	35	36	96	379	1,383	65	2
7.50 - 8.49	2,466	0	0	0	236	10	282	175	13	79	27	30	68	334	1,193	19	0
8.50 - 9.49	1,892	0	0	0	139	1	126	134	9	45	16	21	85	288	1,028	0	0
9.50 - 10.49	1,198	0	0	0	88	0	29	111	9	18	12	11	38	152	729	1	0
10.50 - 11.49	856	0	0	0	18	0	17	86	0	9	1	11	63	134	517	0	0
11.50 - 12.49	573	0	0	0	2	0	4	56	2	0	0	1	33	94	381	0	0
12.50 - 13.49	352	0	0	0	0	0	3	15	1	0	0	1	7	73	252	0	0
13.50 - 14.49	164	0	0	0	0	0	3	12	0	0	0	0	9	64	76	0	0
14.50 - 15.49	67	0	0	0	0	0	0	10	0	0	0	0	4	32	21	0	0
15.50 - 16.49	41	0	0	0	0	0	0	6	0	0	0	0	3	24	8	0	0
16.50 - 17.49	37	0	0	0	0	0	0	0	0	0	0	0	4	23	10	0	0
17.50 - 18.49	37	0	0	0	0	0	0	0	0	0	0	0	2	29	6	0	0
18.50 - 19.49	25	0	0	0	0	0	0	0	0	0	0	0	1	23	1	0	0
19.50 - 20.49	7	0	0	0	0	0	0	0	0	0	0	0	0	7	0	0	0
Sum	52,995	963	1,599	1,806	5,845	6,045	6,074	3,710	1,356	1,044	976	1,451	1,931	4,531	11,347	2,982	1,335

**Turbulence**

Wind speed	Sum	N	NNE	NE	ENE	E	ESE	SE	SSE	S	SSW	SW	WSW	W	WNW	NW	NNW
0.00 - 0.49	0.000	0.000	0.000	0.000	0.000	0.000	0.000	0.000	0.000	0.000	0.000	0.000	0.000	0.000	0.000	0.000	0.000
0.50 - 1.49	0.000	0.000	0.000	0.000	0.000	0.000	0.000	0.000	0.000	0.000	0.000	0.000	0.000	0.000	0.000	0.000	0.000
1.50 - 2.49	0.000	0.000	0.000	0.000	0.000	0.000	0.000	0.000	0.000	0.000	0.000	0.000	0.000	0.000	0.000	0.000	0.000
2.50 - 3.49	0.000	0.000	0.000	0.000	0.000	0.000	0.000	0.000	0.000	0.000	0.000	0.000	0.000	0.000	0.000	0.000	0.000
3.50 - 4.49	0.206	0.132	0.119	0.158	0.310	0.320	0.266	0.275	0.412	0.254	0.336	0.350	0.139	0.094	0.105	0.146	0.133
4.50 - 5.49	0.193	0.124	0.092	0.207	0.293	0.341	0.248	0.268	0.387	0.244	0.311	0.310	0.125	0.082	0.096	0.148	0.130
5.50 - 6.49	0.174		0.080	0.211	0.279	0.331	0.222	0.263	0.349	0.242	0.286	0.267	0.145	0.084	0.096	0.165	0.124
6.50 - 7.49	0.143	0.396			0.262	0.310	0.203	0.242	0.290	0.224	0.268	0.249	0.116	0.074	0.078	0.158	0.071
7.50 - 8.49	0.128				0.251	0.279	0.190	0.233	0.297	0.216	0.276	0.238	0.114	0.070	0.074	0.157	
8.50 - 9.49	0.112				0.245	0.298	0.186	0.232	0.334	0.209	0.228	0.208	0.126	0.079	0.067		
9.50 - 10.49	0.101				0.237		0.179	0.196	0.229	0.174	0.235	0.201	0.134	0.080	0.063	0.132	
10.50 - 11.49	0.092				0.231		0.180	0.192		0.154	0.221	0.171	0.118	0.074	0.066		
11.50 - 12.49	0.085				0.238		0.193	0.198	0.141			0.172	0.110	0.078	0.065		
12.50 - 13.49	0.082						0.185	0.215	0.259			0.243	0.118	0.093	0.067		
13.50 - 14.49	0.090						0.190	0.214					0.100	0.089	0.066		
14.50 - 15.49	0.103							0.209					0.088	0.080	0.092		
15.50 - 16.49	0.099							0.181					0.085	0.081	0.098		
16.50 - 17.49	0.084												0.088	0.082	0.087		
17.50 - 18.49	0.095												0.088	0.098	0.083		
18.50 - 19.49	0.087												0.122	0.086	0.079		
19.50 - 20.49	0.081													0.081			
Sum	0.157	0.136	0.107	0.170	0.278	0.330	0.227	0.246	0.358	0.229	0.294	0.284	0.127	0.081	0.080	0.151	0.130

Project:  
**Quinault**

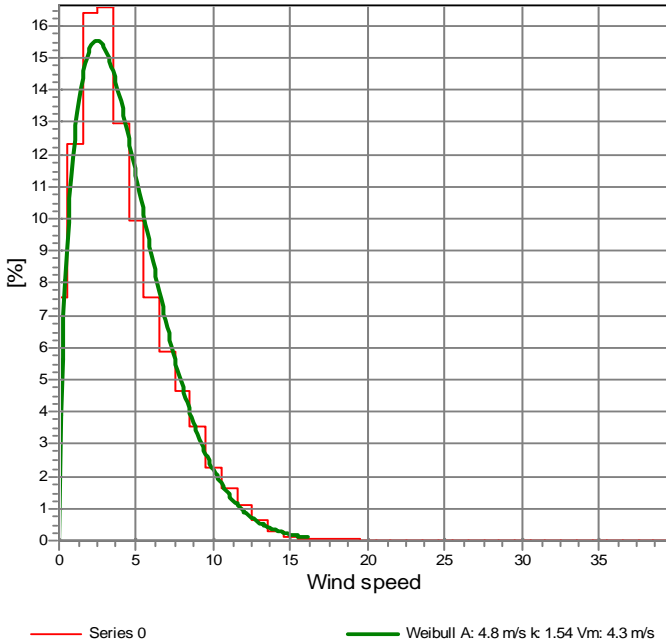
Description:  
Data from file(s)  
Y:\5000\shared\Anemometer\_Loan\_Programs\WPA.NA.Loans\Quinault #3 - WA\Wind Data\Quinault-Pt Grenville 050420.csv  
Y:\5000\shared\Anemometer\_Loan\_Programs\WPA.NA.Loans\Quinault #3 - WA\Wind Data\Quinault-Pt Grenville 040722.csv  
Y:\5000\shared\Anemometer\_Loan\_Programs\WPA.NA.Loans\Quinault #3 - WA\Wind Data\Quinault-Pt Grenville 040826.csv  
Y:\5000\shared\Anemometer\_Loan\_Programs\WPA.NA.Loans\Quinault #3 - WA\Wind Data\Quinault-Pt Grenville 041006.csv  
Y:\5000\shared\Anemometer\_Loan\_Programs\WPA.NA.Loans\Quinault #3 - WA\Wind Data\Quinault-Pt Grenville 041105.csv  
Y:\5000\shared\Anemometer\_Loan\_Programs\WPA.NA.Loans\Quinault #3 - WA\Wind Data\Quinault-Pt Grenville 041203.csv  
Y:\5000\shared\Anemometer\_Loan\_Programs\WPA.NA.Loans\Quinault #3 - WA\Wind Data\Quinault-Pt Grenville 050112.csv  
Y:\5000\shared\Anemometer\_Loan\_Programs\WPA.NA.Loans\Quinault #3 - WA\Wind Data\Quinault-Pt Grenville 050208.csv  
Y:\5000\shared\Anemometer\_Loan\_Programs\WPA.NA.Loans\Quinault #3 - WA\Wind Data\Quinault-Pt Grenville 050314.csv  
Y:\5000\shared\Anemometer\_Loan\_Programs\WPA.NA.Loans\Quinault #3 - WA\Wind Data\Quinault-Pt Grenville 040625.csv  
Y:\5000\shared\Anemometer\_Loan\_Programs\WPA.NA.Loans\Quinault #3 - WA\Wind Data\Quinault-Pt Grenville 050523.csv

Printed/Page  
09/14/2005 11:50 AM / 4  
Licensed user:  
**National Renewable Energy Laboratory**  
1617 Cole Blvd. (MS3811)  
US-GOLDEN, CO 80401  
+1 303-384-7027  
Calculated:  
09/14/2005 11:49 AM/

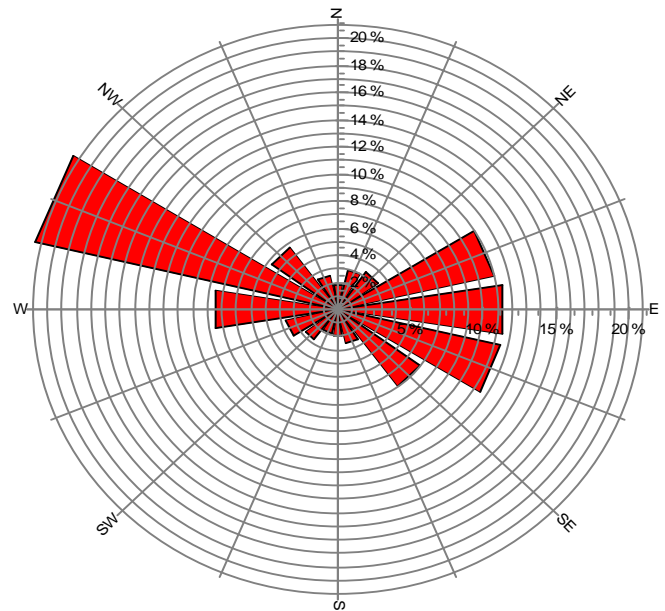
**Meteo data report, height: 20.0 m**

Name of meteo object: Quinault - Pt Grenville

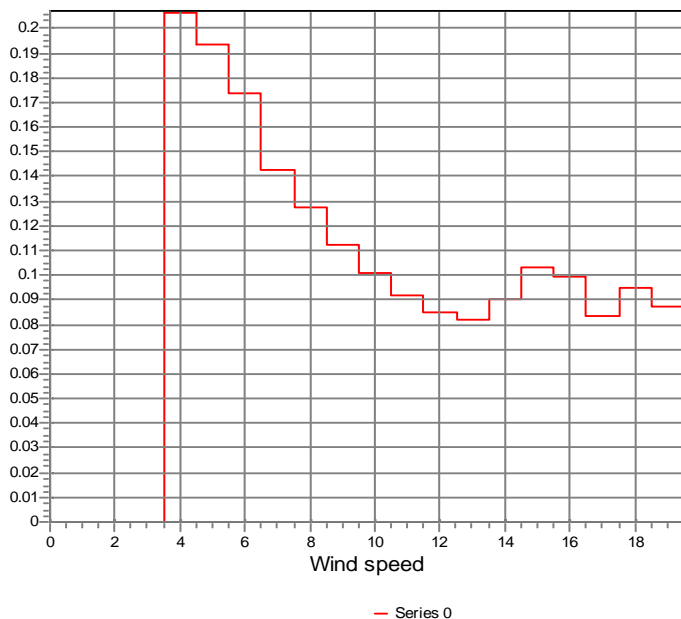
Frequency



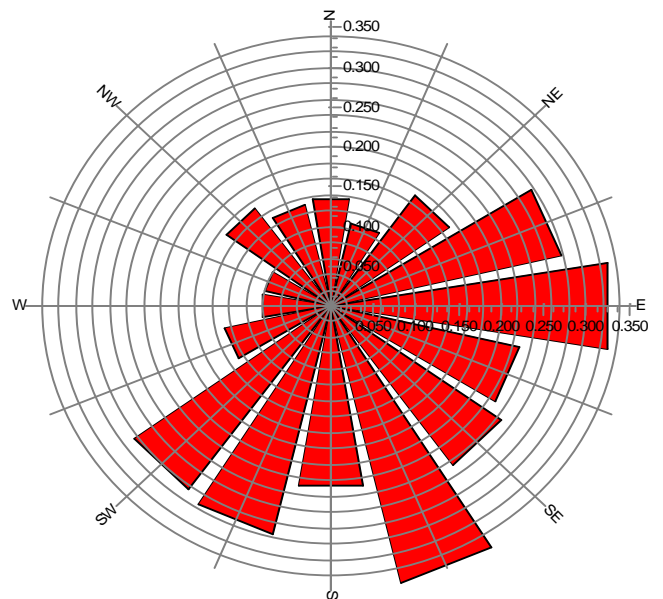
Frequency



Turbulence  
V>4.0 m/s



Turbulence  
V>4.0 m/s



Project:

**Quinault**

Description:

Data from file(s)  
 Y:\5000\shared\Anemometer\_Loan\_Programs\WPA.NA.Loans\Quinault #3 - WA\Wind Data\Quinault-Pt Grenville 050420.csv  
 Y:\5000\shared\Anemometer\_Loan\_Programs\WPA.NA.Loans\Quinault #3 - WA\Wind Data\Quinault-Pt Grenville 040722.csv  
 Y:\5000\shared\Anemometer\_Loan\_Programs\WPA.NA.Loans\Quinault #3 - WA\Wind Data\Quinault-Pt Grenville 040826.csv  
 Y:\5000\shared\Anemometer\_Loan\_Programs\WPA.NA.Loans\Quinault #3 - WA\Wind Data\Quinault-Pt Grenville 041006.csv  
 Y:\5000\shared\Anemometer\_Loan\_Programs\WPA.NA.Loans\Quinault #3 - WA\Wind Data\Quinault-Pt Grenville 041105.csv  
 Y:\5000\shared\Anemometer\_Loan\_Programs\WPA.NA.Loans\Quinault #3 - WA\Wind Data\Quinault-Pt Grenville 041203.csv  
 Y:\5000\shared\Anemometer\_Loan\_Programs\WPA.NA.Loans\Quinault #3 - WA\Wind Data\Quinault-Pt Grenville 050112.csv  
 Y:\5000\shared\Anemometer\_Loan\_Programs\WPA.NA.Loans\Quinault #3 - WA\Wind Data\Quinault-Pt Grenville 050208.csv  
 Y:\5000\shared\Anemometer\_Loan\_Programs\WPA.NA.Loans\Quinault #3 - WA\Wind Data\Quinault-Pt Grenville 050314.csv  
 Y:\5000\shared\Anemometer\_Loan\_Programs\WPA.NA.Loans\Quinault #3 - WA\Wind Data\Quinault-Pt Grenville 040625.csv  
 Y:\5000\shared\Anemometer\_Loan\_Programs\WPA.NA.Loans\Quinault #3 - WA\Wind Data\Quinault-Pt Grenville 050523.csv

Printed/Page

09/14/2005 11:50 AM / 5

Licensed user:

**National Renewable Energy Laboratory**  
 1617 Cole Blvd. (MS3811)  
 US-GOLDEN, CO 80401  
 +1 303-384-7027

Calculated:

09/14/2005 11:49 AM/

## Meteo data report, height: 20.0 m

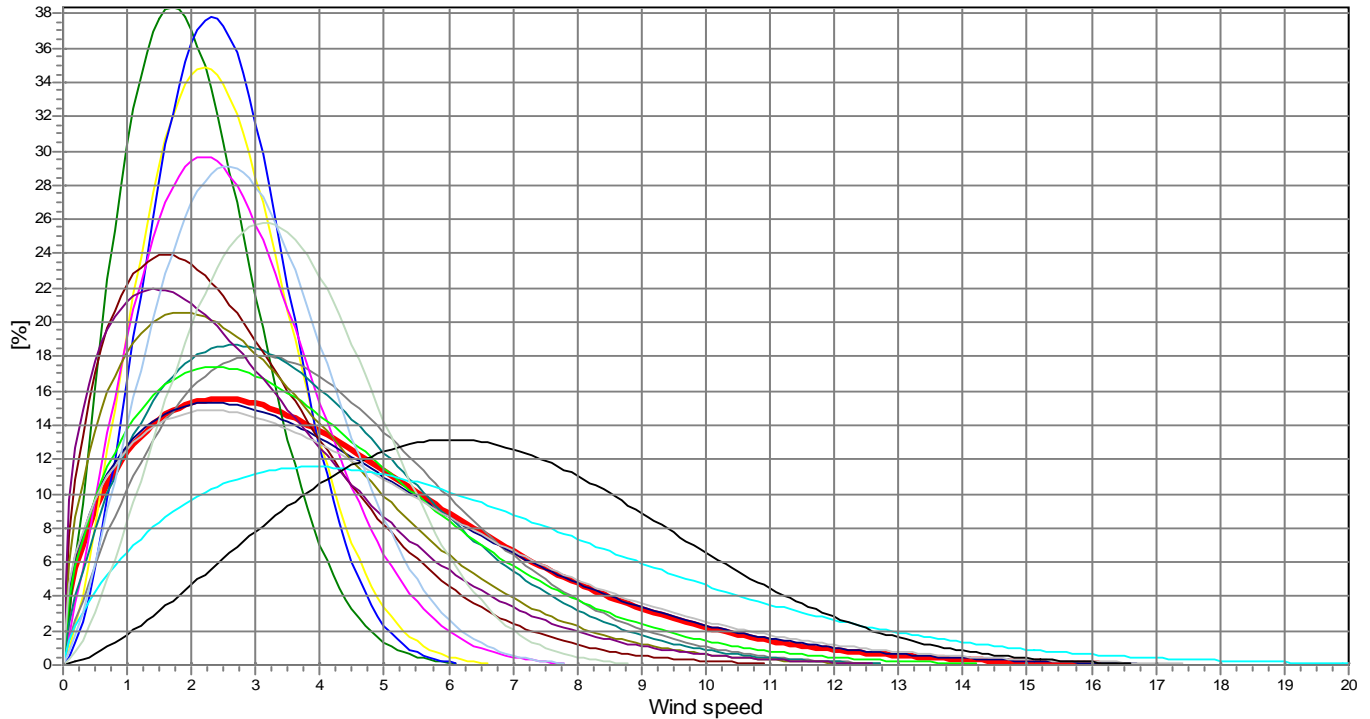
Name of meteo object: Quinault - Pt Grenville

### Weibull Data

k-parameter correction: 0.0080/m

Sector	A- parameter [m/s]	Mean wind speed [m/s]	k- parameter	Frequency	Frequency [%]	Wind shear
0-N	2.31	2.05	2.102	1.82	1.8	0.00
1-NNE	2.77	2.46	2.367	3.02	3.0	0.00
2-NE	2.78	2.47	2.628	3.41	3.4	0.00
3-ESE	4.56	4.05	1.878	11.03	11.0	0.00
4-E	2.99	2.64	2.100	11.41	11.4	0.00
5-ESE	4.26	3.79	1.762	11.46	11.5	0.00
6-SE	4.86	4.39	1.494	7.00	7.0	0.00
7-SSE	3.14	2.83	1.543	2.56	2.6	0.00
8-S	4.37	3.92	1.596	1.97	2.0	0.00
9-SSW	3.65	3.28	1.544	1.84	1.8	0.00
10-SW	3.36	3.06	1.421	2.74	2.7	0.00
11-WSW	4.99	4.52	1.470	3.64	3.6	0.00
12-W	6.72	6.00	1.676	8.55	8.5	0.00
13-WNW	7.51	6.66	2.432	21.41	21.4	0.00
14-NW	3.88	3.44	2.472	5.63	5.6	0.00
15-NNW	3.27	2.89	2.317	2.52	2.5	0.00
mean	4.83	4.35	1.542	100.00	100.0	0.00

Frequency



<span style="color: red;">—</span> Total A: 4.8 m/s k: 1.54 Vm: 4.3 m/s	<span style="color: green;">—</span> N A: 2.3 m/s k: 2.10 Vm: 2.0 m/s	<span style="color: yellow;">—</span> NNE A: 2.8 m/s k: 2.37 Vm: 2.5 m/s	<span style="color: blue;">—</span> NE A: 2.8 m/s k: 2.63 Vm: 2.5 m/s
<span style="color: brown;">—</span> ENE A: 4.6 m/s k: 1.88 Vm: 4.0 m/s	<span style="color: magenta;">—</span> E A: 3.0 m/s k: 2.10 Vm: 2.6 m/s	<span style="color: cyan;">—</span> ESE A: 4.3 m/s k: 1.76 Vm: 3.8 m/s	<span style="color: darkblue;">—</span> SE A: 4.9 m/s k: 1.49 Vm: 4.4 m/s
<span style="color: darkred;">—</span> SSE A: 3.1 m/s k: 1.54 Vm: 2.8 m/s	<span style="color: limegreen;">—</span> S A: 4.4 m/s k: 1.60 Vm: 3.9 m/s	<span style="color: olivegreen;">—</span> SSW A: 3.6 m/s k: 1.54 Vm: 3.3 m/s	<span style="color: purple;">—</span> SW A: 3.4 m/s k: 1.42 Vm: 3.1 m/s
<span style="color: grey;">—</span> WSW A: 5.0 m/s k: 1.47 Vm: 4.5 m/s	<span style="color: cyan;">—</span> W A: 6.7 m/s k: 1.68 Vm: 6.0 m/s	<span style="color: black;">—</span> WNW A: 7.5 m/s k: 2.43 Vm: 6.7 m/s	<span style="color: lightgrey;">—</span> NW A: 3.9 m/s k: 2.47 Vm: 3.4 m/s
<span style="color: lightblue;">—</span> NNW A: 3.3 m/s k: 2.32 Vm: 2.9 m/s			